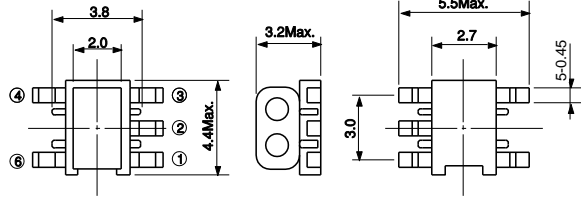
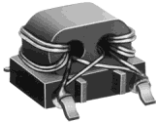


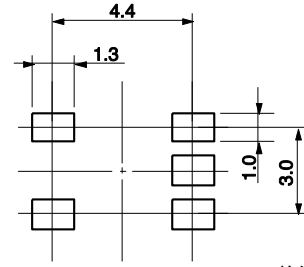
TYPE B4F/ B4F型



Recommended patterns
推荐焊盘尺寸



(Unit: mm) (单位:毫米)

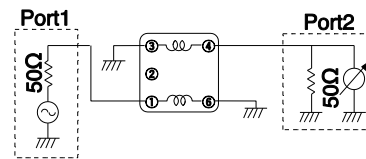


(Unit: mm) (单位:毫米)

Balun Transformers 平衡—不平衡变压器

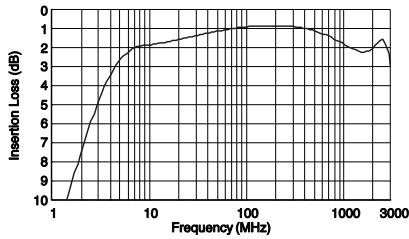
Part No.	Winding Turns	μ iac
#617DB-1653=P3	2 1/2 T	300
#617DB-1654=P3	3 1/2 T	300
#617DB-1655=P3	4 1/2 T	300
#617DB-1724=P3	5 1/2 T	300

Test Circuit 测试电路

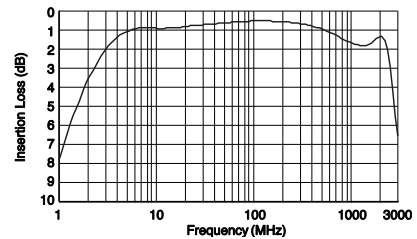


Typical Characteristics 典型特性

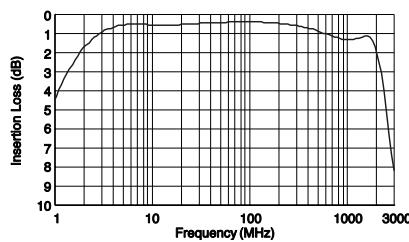
1) #617DB-1653=P3 50Ω:50Ω



2) #617DB-1654=P3 50Ω:50Ω



3) #617DB-1655=P3 50Ω:50Ω



4) #617DB-1724=P3 50Ω:50Ω

