

LQH32CNR27M33#

“#” indicates a package specification code.

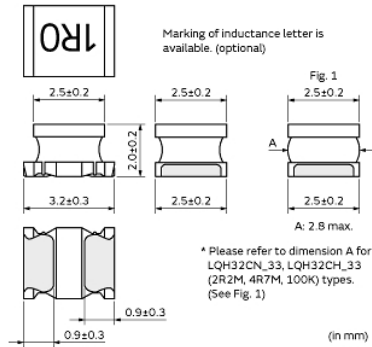
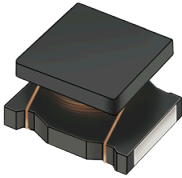
Size Code 3225 (1210) in mm (in inch)



< List of part numbers with package codes >

LQH32CNR27M33K LQH32CNR27M33L

Appearance & Shape



References

| Packaging | Specifications | Standard Packing Quantity |
|-----------|------------------|---------------------------|
| K | 330Embossed Tape | 7500 |
| L | 180Embossed Tape | 2000 |

| Mass (typ.) | |
|-------------|-------|
| 1 piece | 0.06g |

Notices

When rated current is applied to the products, self-temperature rise shall be limited to 20°C max and inductance will be within ±10% of initial inductance value.

Attention

- This datasheet is downloaded from the website of Murata Manufacturing Co., Ltd. Therefore, it's specifications are subject to change or our products in it may be discontinued without advance notice. Please check with our sales representatives or product engineers before ordering.
- This datasheet has only typical specifications because there is no space for detailed specifications. Therefore, please review our product specifications or consult the approval sheet for product specifications before ordering.

LQH32CNR27M33#

“#” indicates a package specification code.



Specifications

| | |
|--|---------------|
| L size | 3.2±0.3mm |
| W size | 2.5±0.2mm |
| T size | 2.0±0.2mm |
| Size code inch (mm) | 1210 (3225) |
| Inductance | 0.27μH±20% |
| Inductance Test Frequency | 1MHz |
| Rated current (Itemp) (Based on Temperature rise) | 1250mA |
| Max. of DC resistance | 0.0442Ω |
| Class of magnetic shield | No Shield |
| Self resonance frequency (min.) | 250MHz |
| Operating Temperature Range(Self-temperature rise is not included) | -40°C to 85°C |
| Brand | Murata |
| DC Resistance Intermediate Values | 0.034Ω±30% |
| Series | LQH32CN_33 |

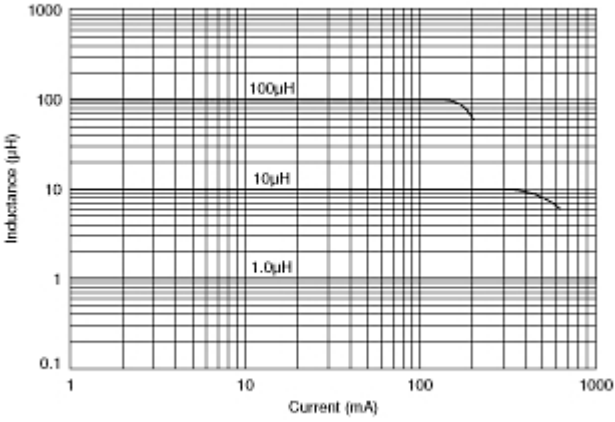
Attention

- 1.This datasheet is downloaded from the website of Murata Manufacturing Co., Ltd. Therefore, it's specifications are subject to change or our products in it may be discontinued without advance notice. Please check with our sales representatives or product engineers before ordering.
- 2.This datasheet has only typical specifications because there is no space for detailed specifications.
Therefore, please review our product specifications or consult the approval sheet for product specifications before ordering.

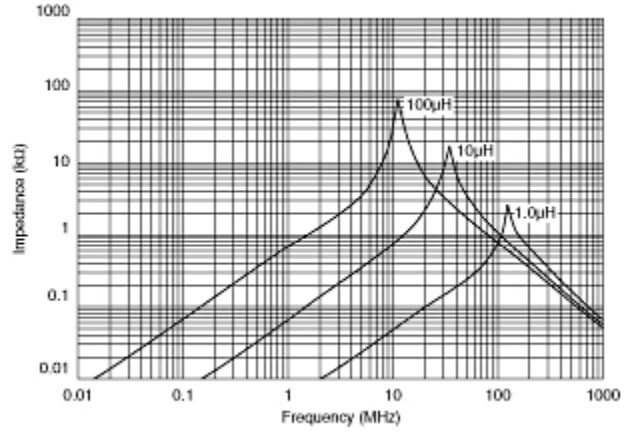
LQH32CNR27M33#

“#” indicates a package specification code.

Characteristic Data



Impedance - Current Characteristics



Impedance - Frequency Characteristics

Attention

- 1.This datasheet is downloaded from the website of Murata Manufacturing Co., Ltd. Therefore, it's specifications are subject to change or our products in it may be discontinued without advance notice. Please check with our sales representatives or product engineers before ordering.
- 2.This datasheet has only typical specifications because there is no space for detailed specifications. Therefore, please review our product specifications or consult the approval sheet for product specifications before ordering.