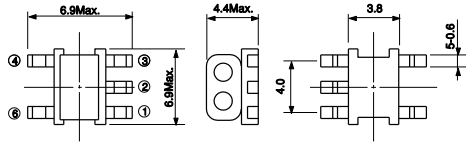


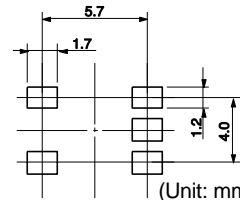
TYPE B5F/ B5F型



Recommended patterns
推荐焊盘尺寸



(Unit: mm) (单位:毫米)

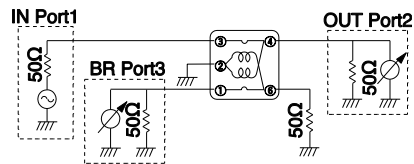


(Unit: mm) (单位:毫米)

Splitters/Directional Couplers 分歧器/方向性结合器

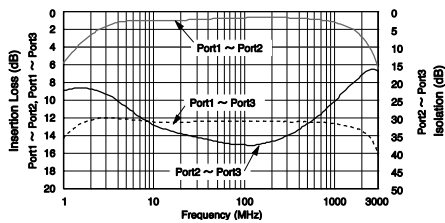
Part No.	Winding Turns	BR I.L.(dB) at 100MHz	μ iac
#458PS-1623=P3	1-6=3-4 2-4=2-6	12.5	300
#458PS-1624=P3	1/2 T	14.0	300
#458PS-1625=P3	1/2 T	16.0	300

Test Circuit 测试电路

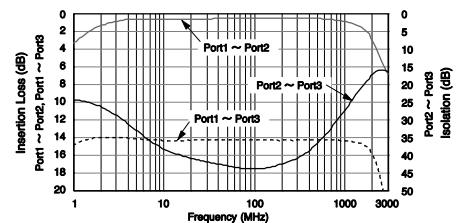


Typical Characteristics 典型特性

1) #458PS-1623=P3 50Ω系



2) #458PS-1624=P3 50Ω系



3) #458PS-1625=P3 50Ω系

