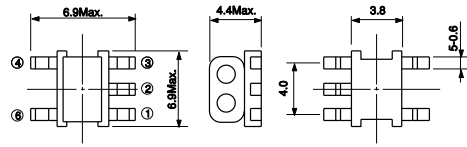
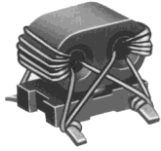


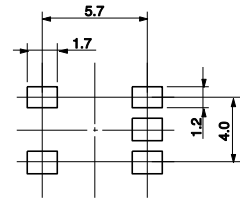
TYPE B5F/ B5F型



Recommended patterns
推荐焊盘尺寸



(Unit: mm) (单位:毫米)

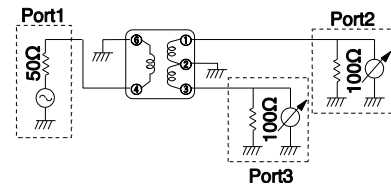


(Unit: mm) (单位:毫米)

Transformers for Frequency Mixer 混频器用变压器

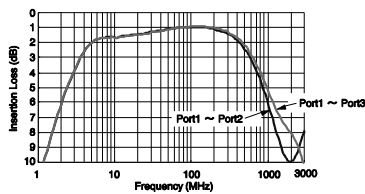
| Part No. | Winding Turns 1-2=2-3=4-6 | μiac |
|----------------|------------------------------|------|
| #458PT-1619=P3 | 2 T | 300 |
| #458PT-1586=P3 | 3 T | 230 |
| #458PT-1587=P3 | 4 T | 230 |
| #458PT-1565=P3 | 5 T | 230 |

Test Circuit 测试电路

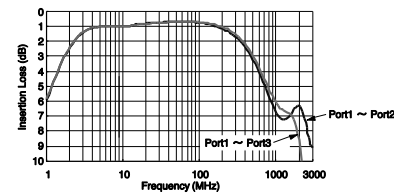


Typical Characteristics 典型特性

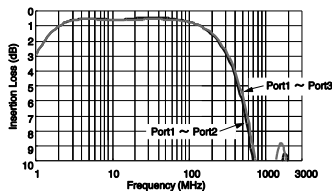
1) #458PT-1619=P3 (Impedance Ratio=50Ω:200Ω)



2) #458PT-1586=P3 (Impedance Ratio=50Ω:200Ω)



3) #458PT-1587=P3 (Impedance Ratio=50Ω:200Ω)



4) #458PT-1565=P3 (Impedance Ratio=50Ω:200Ω)

