

# GJM0335C1E9R6CB01#

“#” indicates a package specification code.



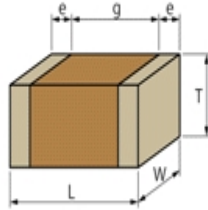
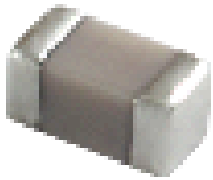
< List of part numbers with package codes >

GJM0335C1E9R6CB01D

GJM0335C1E9R6CB01W

GJM0335C1E9R6CB01J

## Appearance & Shape



## References

Packaging	Specifications	Standard Packing Quantity
D	180mm Paper Tape	15000
W	180mm Paper Tape (W8P1)	30000
J	330mm Paper Tape	50000

Mass (typ.)	
1 piece	0.33mg
φ180mm Reel	118g

**Attention**

- 1.This datasheet is downloaded from the website of Murata Manufacturing Co., Ltd. Therefore, it's specifications are subject to change or our products in it may be discontinued without advance notice. Please check with our sales representatives or product engineers before ordering.
- 2.This datasheet has only typical specifications because there is no space for detailed specifications.  
Therefore, please review our product specifications or consult the approval sheet for product specifications before ordering.

# GJM0335C1E9R6CB01#

“#” indicates a package specification code.

## Specifications

Length	0.6±0.03mm
Width	0.3±0.03mm
Thickness	0.3±0.03mm
Capacitance	9.6pF ±0.25pF
Distance between external terminals g	0.2mm min.
External terminal size e	0.1 to 0.2mm
Operating Temperature Range	-55°C to 125°C
Rated Voltage	25Vdc
Size code in inch(mm)	0201 (0603M)
TC	0±30ppm/°C
Temperature characteristics (complied standard)	C0G(EIA)
Temperature range of temperature characteristics	25°C to 125°C

### Attention

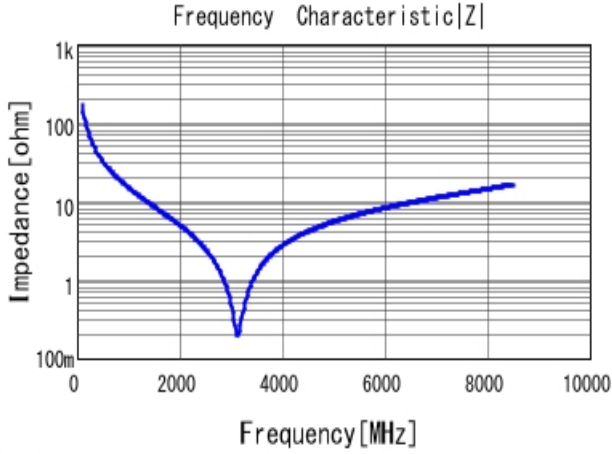
- 1.This datasheet is downloaded from the website of Murata Manufacturing Co., Ltd. Therefore, it's specifications are subject to change or our products in it may be discontinued without advance notice. Please check with our sales representatives or product engineers before ordering.
- 2.This datasheet has only typical specifications because there is no space for detailed specifications. Therefore, please review our product specifications or consult the approval sheet for product specifications before ordering.

# GJM0335C1E9R6CB01#

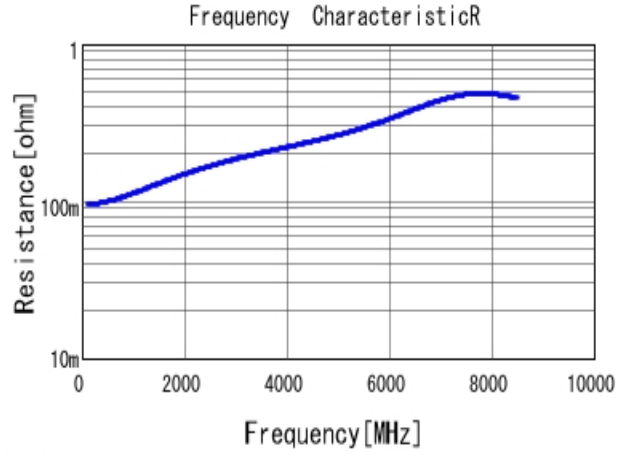
“#” indicates a package specification code.

## Characteristic Data

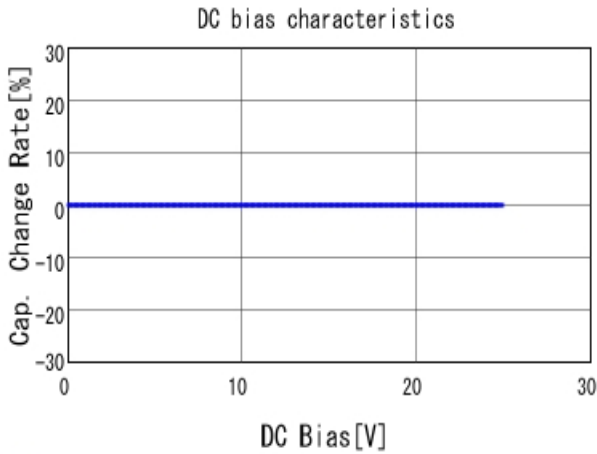
The charts below may show another part number which shares its characteristics.



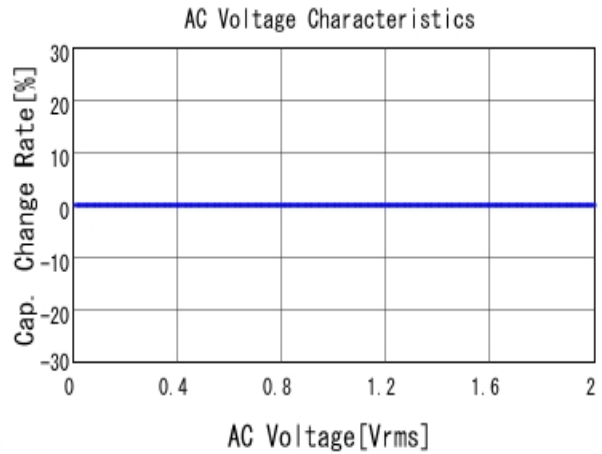
GJM0335C1E9R6CB01 |Z| DC0V, 25degC



GJM0335C1E9R6CB01 R DC0V, 25degC



GJM0335C1E9R6CB01 C-DC bias capchange, 25.0degC, AC1V



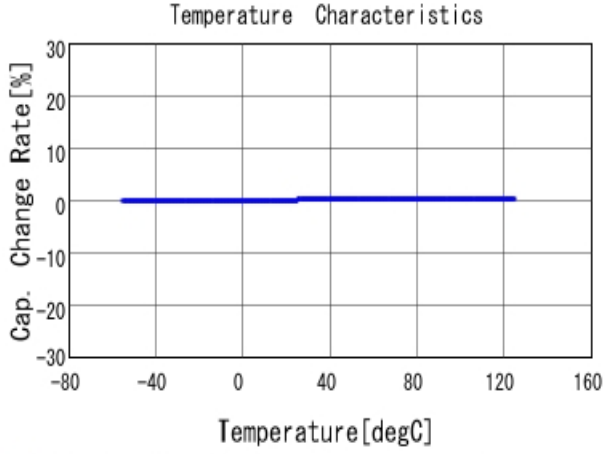
GJM0335C1E9R6CB01 C-AC Voltage capchange, DC0V, 25.0d

**Attention**

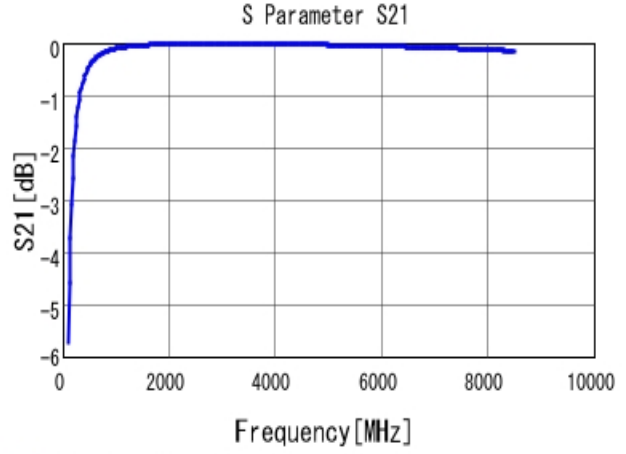
- 1.This datasheet is downloaded from the website of Murata Manufacturing Co., Ltd. Therefore, it's specifications are subject to change or our products in it may be discontinued without advance notice. Please check with our sales representatives or product engineers before ordering.
- 2.This datasheet has only typical specifications because there is no space for detailed specifications. Therefore, please review our product specifications or consult the approval sheet for product specifications before ordering.

# GJM0335C1E9R6CB01#

“#” indicates a package specification code.



■ GJM0335C1E9R6CB01 C-Temp. capchange, DCOV, AC1Vrms



■ GJM0335C1E9R6CB01 S21 DCOV, 25degC

**Attention**

- 1.This datasheet is downloaded from the website of Murata Manufacturing Co., Ltd. Therefore, it's specifications are subject to change or our products in it may be discontinued without advance notice. Please check with our sales representatives or product engineers before ordering.
- 2.This datasheet has only typical specifications because there is no space for detailed specifications. Therefore, please review our product specifications or consult the approval sheet for product specifications before ordering.