

Inductors

For Power Line SMD

SLF Series SLF6025 Type

FEATURES

- The SLF series are characterized by low profile, low DC resistance, and high current handling capacities.
- Because they are magnetically shielded, these parts can be used in high-density mounting configurations.
- Flat bottom surface ensures secure, reliable mounting.
- Provided in embossed carrier tape packaging for use with automatic mounting machines.

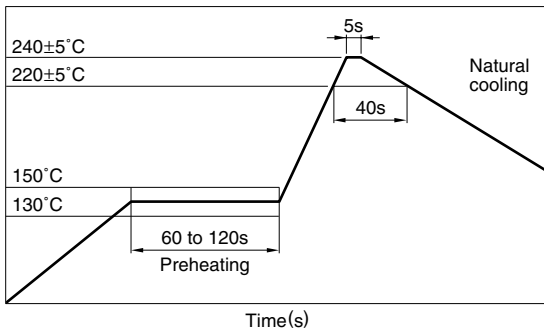
APPLICATIONS

Portable telephones, personal computers, hard disk drives, and other electronic equipment.

SPECIFICATIONS

Operating temperature range	-20 to +85°C [Including self-temperature rise]
Storage temperature range	-40 to +85°C[Unit of products]

RECOMMENDED REFLOW SOLDERING CONDITIONS



PRODUCT IDENTIFICATION

SLF	6025	T-	4R7	M	1R5	-2
(1)	(2)	(3)	(4)	(5)	(6)	(7)

(1) Series name

(2) Dimensions L×W×T

6025	6.0×6.0×2.5mm
------	---------------

(3) Packaging style

T	Taping(reel)
---	--------------

(4) Inductance value

4R7	4.7μH
100	10μH

(5) Inductance tolerance

M	±20%
---	------

(6) Rated current

1R5	1.5A
R88	0.88A

(7) TDK internal code

(Some products may not have this number. See the main body for details.)

PACKAGING STYLE AND QUANTITIES

Packaging style	Quantity
Taping	1000 pieces/reel

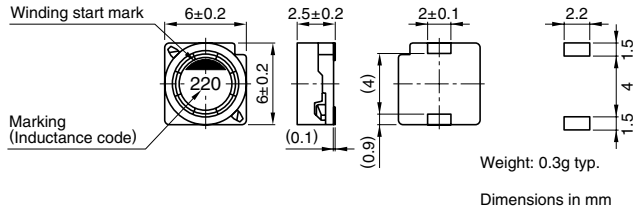
Inductors

For Power Line

SMD

SLF Series SLF6025 Type

SHAPES AND DIMENSIONS/RECOMMENDED PC BOARD PATTERN



ELECTRICAL CHARACTERISTICS

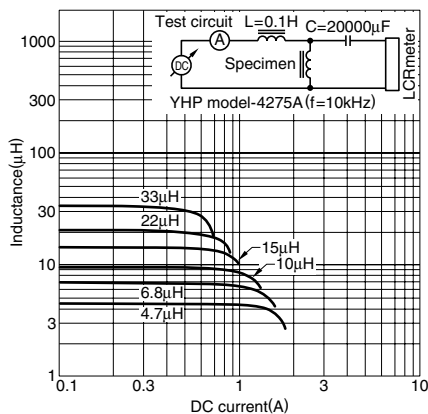
Inductance (μH)	Inductance tolerance (%)	Test frequency L (kHz)	DC resistance (Ω)±20%	Rated current (A)*		Part No.
				Based on inductance change	Based on temperature rise	
4.7	±20	1	0.0306	1.5max.	1.8typ.	SLF6025T-4R7M1R5
6.8	±20	1	0.0442	1.3max.	1.5typ.	SLF6025T-6R8M1R3
10	±20	1	0.0573	1max.	1.3typ.	SLF6025T-100M1R0
15	±20	1	0.085	0.88max.	1.1typ.	SLF6025T-150MR88
22	±20	1	0.122	0.73max.	0.94typ.	SLF6025T-220MR73
33	±20	1	0.18	0.59max.	0.79typ.	SLF6025T-330MR59
47	±20	1	0.24	0.48max.	0.67typ.	SLF6025T-470MR48
68	±20	1	0.37	0.42max.	0.54typ.	SLF6025T-680MR42
100	±20	1	0.5	0.33max.	0.47typ.	SLF6025T-101MR33

* Rated current: Value obtained when current flows and the temperature has risen to 25°C or when DC current flows and the initial value of inductance has fallen by 30%, whichever is smaller.

- Test equipment Inductance: YHP 4194A IMPEDANCE GAIN/PHASE ANALYZER, or equivalent
Rdc: DIGITAL MILLIOHM METER VP-2941A MATSUSHITA, or equivalent

TYPICAL ELECTRICAL CHARACTERISTICS

INDUCTANCE CHANGE vs. DC SUPERPOSITION CHARACTERISTICS



• All specifications are subject to change without notice.