

# KCA55L7UMF221KL01#

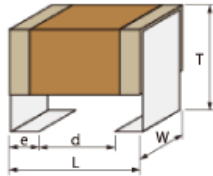
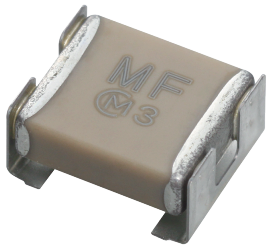
“#” indicates a package specification code.



< List of part numbers with package codes >

KCA55L7UMF221KL01L      KCA55L7UMF221KL01K

## Appearance & Shape



## References

Packaging	Specifications	Standard Packing Quantity
L	180Embossed Tape	400
K	330Embossed Tape	2000

Mass (typ.)	
1 piece	0.26g

## Notices

X1/Y2 Class Certified Products, Rated Voltage  
X1:250Vac(r.m.s.)/Y2:250Vac(r.m.s.)/630Vdc

### Attention

- 1.This datasheet is downloaded from the website of Murata Manufacturing Co., Ltd. Therefore, it's specifications are subject to change or our products in it may be discontinued without advance notice. Please check with our sales representatives or product engineers before ordering.
- 2.This datasheet has only typical specifications because there is no space for detailed specifications.  
Therefore, please review our product specifications or consult the approval sheet for product specifications before ordering.

# KCA55L7UMF221KL01#

“#” indicates a package specification code.

## Specifications

Length	6.1±0.4mm
Width	5.1±0.3mm
Thickness	2.8±0.2mm
Capacitance	220pF ±10%
Distance between metal terminal d	4.0mm(min.)
Metal terminal width e	0.9±0.2mm
Operating Temperature Range	-55°C to 125°C
Rated Voltage	250Vac(r.m.s.)
TC	25 to 125°C : -750±120ppm/°C -55 to 25°C : -750+120/-347ppm/°C
Temperature characteristics (complied standard)	U2J(EIA)
Temperature range of temperature characteristics	-55°C to 125°C

### Attention

1.This datasheet is downloaded from the website of Murata Manufacturing Co., Ltd. Therefore, it's specifications are subject to change or our products in it may be discontinued without advance notice. Please check with our sales representatives or product engineers before ordering.

2.This datasheet has only typical specifications because there is no space for detailed specifications.

Therefore, please review our product specifications or consult the approval sheet for product specifications before ordering.

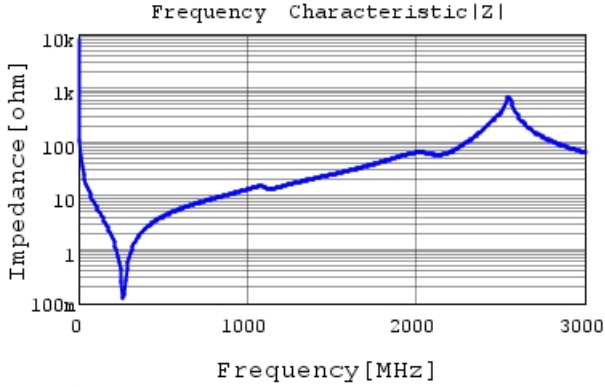
# KCA55L7UMF221KL01#

"#" indicates a package specification code.

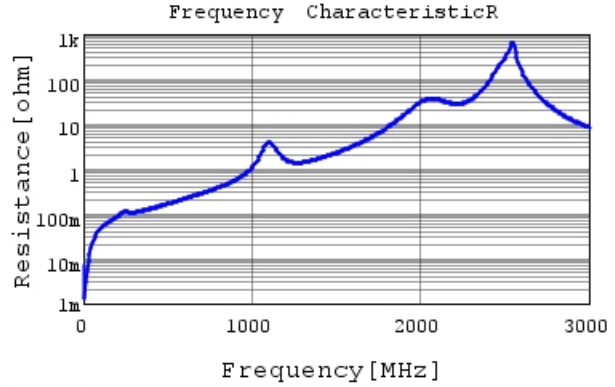


## Characteristic Data

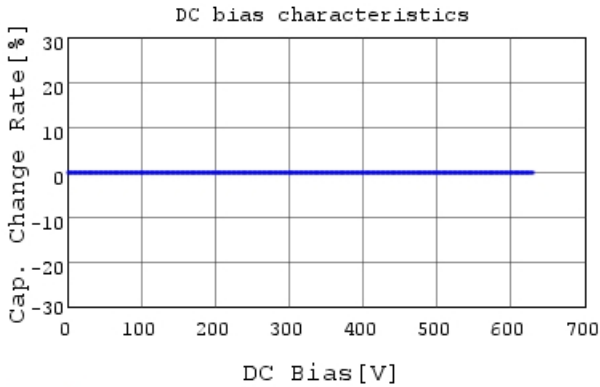
The charts below may show another part number which shares its characteristics.



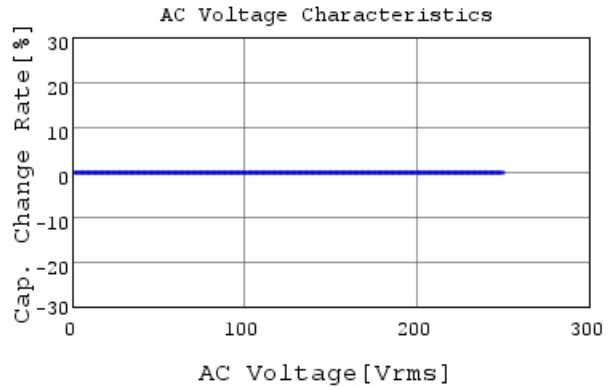
KCA55L7UMF221KL01 |Z| DCOV, 25degC



KCA55L7UMF221KL01 R DCOV, 25degC



KCA55L7UMF221KL01 C-DC bias capchange, 25.0c



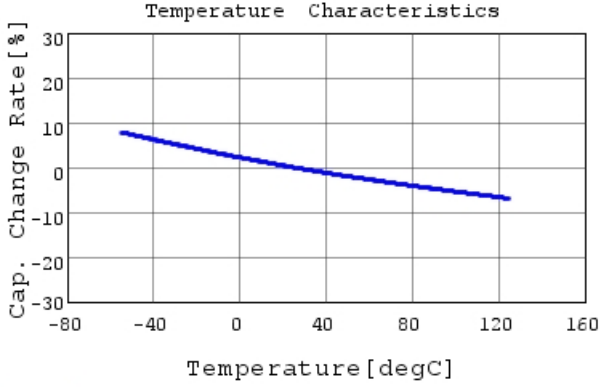
KCA55L7UMF221KL01 C-AC Voltage capchange, Dc

**Attention**

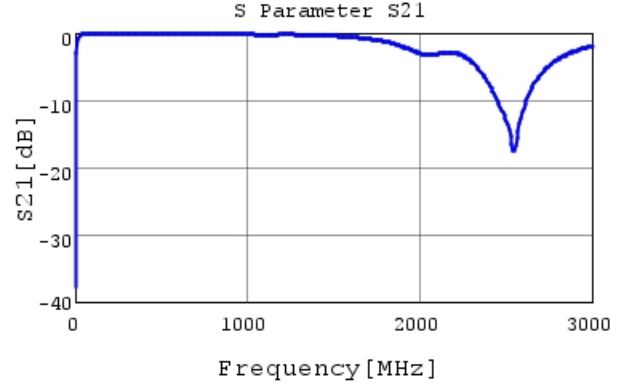
- 1.This datasheet is downloaded from the website of Murata Manufacturing Co., Ltd. Therefore, it's specifications are subject to change or our products in it may be discontinued without advance notice. Please check with our sales representatives or product engineers before ordering.
- 2.This datasheet has only typical specifications because there is no space for detailed specifications. Therefore, please review our product specifications or consult the approval sheet for product specifications before ordering.

# KCA55L7UMF221KL01#

"#" indicates a package specification code.



KCA55L7UMF221KL01 C-Temp. capchange, DCOV, 1



KCA55L7UMF221KL01 S21 DCOV, 25degC

**Attention**

- 1.This datasheet is downloaded from the website of Murata Manufacturing Co., Ltd. Therefore, it's specifications are subject to change or our products in it may be discontinued without advance notice. Please check with our sales representatives or product engineers before ordering.
- 2.This datasheet has only typical specifications because there is no space for detailed specifications. Therefore, please review our product specifications or consult the approval sheet for product specifications before ordering.