

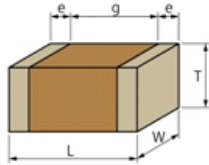
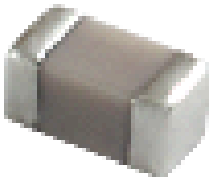
GJM0225C1E8R3BB01#

“#” indicates a package specification code.



< List of part numbers with package codes >
GJM0225C1E8R3BB01L

Appearance & Shape



References

Packaging	Specifications	Standard Packing Quantity
L	180Embossed Tape	40000

Mass (typ.)	
1 piece	0.09mg
φ180mm Reel	198g

Attention

- 1.This datasheet is downloaded from the website of Murata Manufacturing Co., Ltd. Therefore, it's specifications are subject to change or our products in it may be discontinued without advance notice. Please check with our sales representatives or product engineers before ordering.
- 2.This datasheet has only typical specifications because there is no space for detailed specifications. Therefore, please review our product specifications or consult the approval sheet for product specifications before ordering.

GJM0225C1E8R3BB01#

“#” indicates a package specification code.



Specifications

Length	0.4±0.02mm
Width	0.2±0.02mm
Thickness	0.2±0.02mm
Capacitance	8.3pF ±0.1pF
Distance between external terminals g	0.13mm min.
External terminal size e	0.07 to 0.14mm
Operating Temperature Range	-55°C to 125°C
Rated Voltage	25Vdc
Size code in inch(mm)	01005 (0402M)
TC	0±30ppm/°C
Temperature characteristics (complied standard)	C0G(EIA)
Temperature range of temperature characteristics	25°C to 125°C

Attention

- 1.This datasheet is downloaded from the website of Murata Manufacturing Co., Ltd. Therefore, it's specifications are subject to change or our products in it may be discontinued without advance notice. Please check with our sales representatives or product engineers before ordering.
- 2.This datasheet has only typical specifications because there is no space for detailed specifications. Therefore, please review our product specifications or consult the approval sheet for product specifications before ordering.

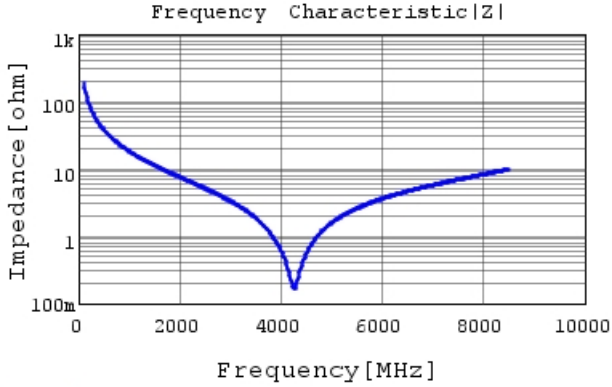
GJM0225C1E8R3BB01#

"#" indicates a package specification code.

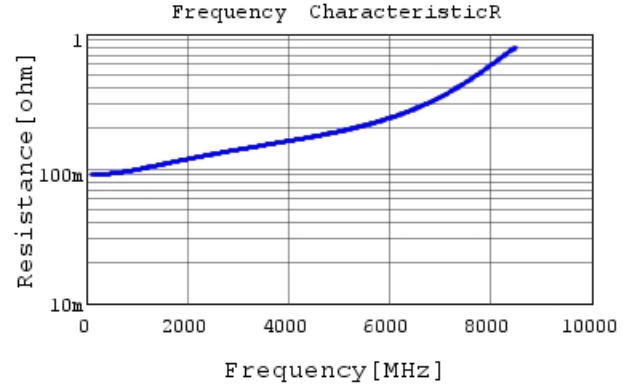


Characteristic Data

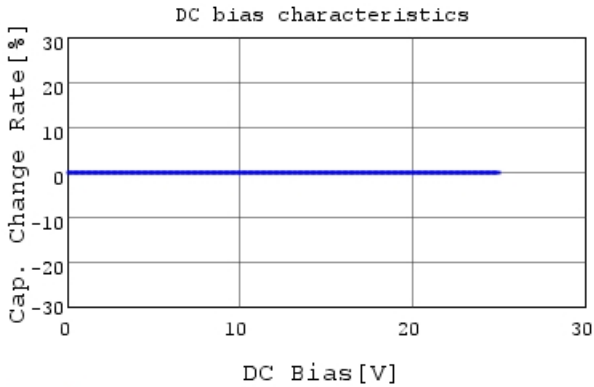
The charts below may show another part number which shares its characteristics.



GJM0225C1E8R3BB01 |Z| DCOV, 25degC



GJM0225C1E8R3BB01 R DCOV, 25degC



GJM0225C1E8R3BB01 C-DC bias capchange, 25.0c



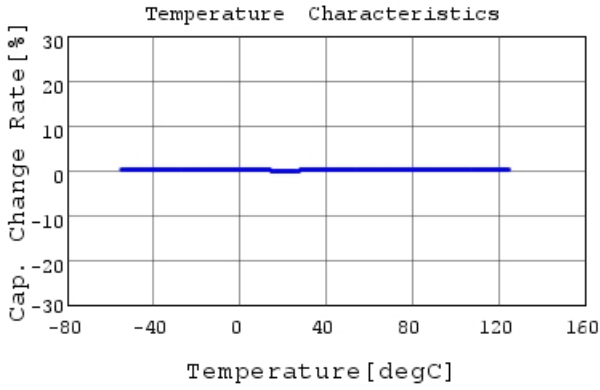
GJM0225C1E8R3BB01 C-AC Voltage capchange, Dc

Attention

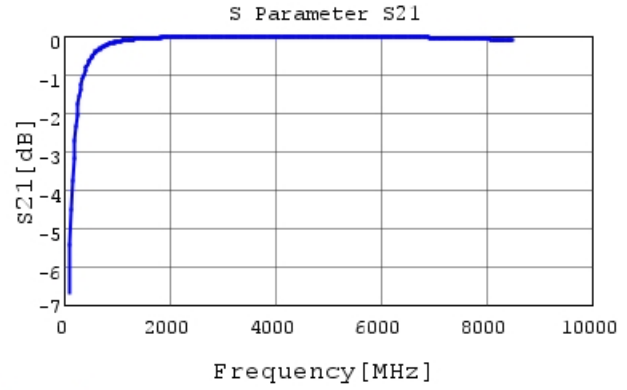
- 1.This datasheet is downloaded from the website of Murata Manufacturing Co., Ltd. Therefore, it's specifications are subject to change or our products in it may be discontinued without advance notice. Please check with our sales representatives or product engineers before ordering.
- 2.This datasheet has only typical specifications because there is no space for detailed specifications. Therefore, please review our product specifications or consult the approval sheet for product specifications before ordering.

GJM0225C1E8R3BB01#

"#" indicates a package specification code.



GJM0225C1E8R3BB01 C-Temp. capchange, DCOV, 1



GJM0225C1E8R3BB01 S21 DCOV, 25degC

Attention

- 1.This datasheet is downloaded from the website of Murata Manufacturing Co., Ltd. Therefore, it's specifications are subject to change or our products in it may be discontinued without advance notice. Please check with our sales representatives or product engineers before ordering.
- 2.This datasheet has only typical specifications because there is no space for detailed specifications. Therefore, please review our product specifications or consult the approval sheet for product specifications before ordering.