



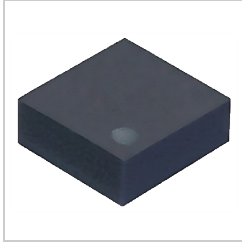
Print



Close

Panasonic

AQY2C5R3PZ | PhotoMOS CC TSON 1 Form A CxR



※Photo may vary from actual product.

RoHS compliant

Product Number	AQY2C5R3PZ
Part Number	AQY2C5R3PZ
Details	Load voltage:100 V
Product name	PhotoMOS CC TSON 1 Form A CxR
Features	Super miniature TSON package, Capacitor Coupled isolation

Spec Detail

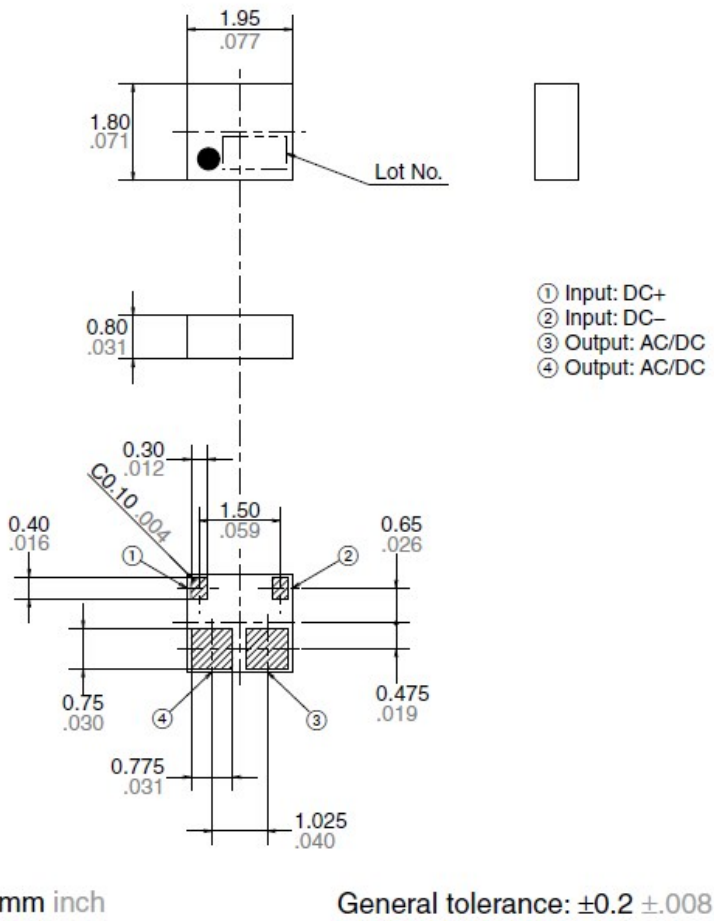
As of April 26, 2020

Specifications and design of the products are subject to change without notice for the product improvement.

Item	Specifications
Product Number	AQY2C5R3PZ
Part Number	AQY2C5R3PZ
Product name	CC TSON CxR
Type	CC
Package	TSON
Voltage type	AC/DC
Input voltage [V_{IN}]	5.5 V
Input reverse voltage [V_{RIN}]	0.2 V
Power dissipation [P_{in}]	1.2 mW
Load voltage [V_L]	100 V
Load current	0.12 A
Continuous load current [I_L]	0.12 A
Peak load current [I_{peak}]	0.3 A
Power dissipation [P_{out}]	250 mW
Total power dissipation [P_t]	250 mW
I/O isolation voltage [V_{iso}]	200 Vrms
Ambient temperature: Operating [T_{opr}]	-40 to +105°C -40 to +221°F
Ambient temperature: Storage [T_{stg}]	-40 to +125°C -40 to +257°F
Operate voltage (Typical) [V_{Fon}]	2.0 V

Operate voltage (Maximum) [V_{Fon}]	2.5 V
Turn off voltage (Minimum) [V_{Foff}]	0.5 V
Turn off voltage (Typical) [V_{Foff}]	1.5 V
Input current (Typical) [I_{IN}]	0.09 mA
Input current (Maximum) [I_{IN}]	0.2 mA
On resistance (Typical) [R_{on}]	9 ohm
ON resistance (Maximum) [R_{on}]	14 ohm
Output capacitance (Typical) [C_{out}]	5.8 pF
Output capacitance (Maximum) [C_{out}]	8 pF
Off state leakage current (Maximum) [I_{Leak}]	10nA
Over current protection	Nothing
Turn on time (Typical)	0.03 ms
Turn on time (Maximum)	0.2 ms
Turn off time (Typical)	0.04 ms
Turn off time (Maximum)	0.5 ms
I/O capacitance (Typical) [C_{iso}]	1.2 pF
I/O capacitance (Maximum) [C_{iso}]	3 pF
[Recommended operating conditions] Input voltage [V_{IN}]	Min.: 3 V, Max.: 5 V
[Recommended operating conditions] Load voltage [V_L]	Max.: 50 V
[Recommended operating conditions] Continuous load current [I_L]	Max.: 0.12 A
Terminal shape	Surface-mount terminal
Contact arrangement	1 Form A
Packing style	Tape and reel packing style (Z)

External dimensions



Recommended mounting pad (Top view)

Recommended mounting pad (Top view)

