

LTC3892EFE-1

PolyPhase High V_{OUT} Synchronous Buck Converter

DESCRIPTION

Demonstration circuit 2190A is a high output voltage, high efficiency synchronous PolyPhase[®] buck converter featuring the LTC[®]3892EFE-1. This demo circuit is available in two versions. The input voltage range of both versions is from 16V to 55V. The DC2190A-A is configured using two each LTC3892EFE-1 devices with 4-phase interleaving operation which provides a 12V/60A output, while the DC2190A-B is configured using one LTC3892EFE-1 device with 2-phase interleaving operation which provides a 12V/30A output.

Both boards have a mode selection jumper that allows the converter to run in forced CCM mode, pulse-skip mode or Burst Mode[®] operation. Synchronization to an external clock (frequency range 100kHz to 300kHz) is also possible on this board.

The demo circuit senses inductor current with a sense resistor but also has an optional DCR sense circuit that allows using the inductor's DCR as the current sensing element to save cost, footprint and improve efficiency.

The LTC3892EFE-1 data sheet gives a complete description of these parts, operation and application information and must be read in conjunction with this quick start guide for DC2190A.

Design files for this circuit board are available at <http://www.linear.com/demo/DC2190A>

LT, LT, LTC, LTM, Linear Technology and the Linear logo, PolyPhase and Burst Mode are registered trademarks of Linear Technology Corporation. All other trademarks are the property of their respective owners.

PERFORMANCE SUMMARY

Specifications are at $T_A = 25^\circ\text{C}$

DC2190A-B

SYMBOL	PARAMETER	CONDITIONS	MIN	TYP	MAX	UNITS
V_{IN}	Input Supply Range		16		55	V
V_{OUT}	Output Voltage Range	$V_{IN} = 16\text{V to } 55\text{V}$, $I_{OUT} = 0\text{A to } 30\text{A}/2\text{-Phase}$	11.8	12	12.2	V
f_{SW}	Typical Free Running Switching Frequency			140		kHz
Efficiency	2-Phase Efficiency See Figure 3 for Efficiency Curves	$V_{IN} = 48\text{V}$, $V_{OUT1} = 12\text{V}$, $I_{OUT} = 30\text{A}$		97.2		%

DC2190A-A

SYMBOL	PARAMETER	CONDITIONS	MIN	TYP	MAX	UNITS
V_{IN}	Input Supply Range		16		55	V
V_{OUT}	Output Voltage Range	$V_{IN} = 16\text{V to } 55\text{V}$, $I_{OUT} = 0\text{A to } 60\text{A}/4\text{-Phase}$	11.8	12	12.2	V
f_{SW}	Typical Free Running Switching Frequency			140		kHz
Efficiency	4-Phase Efficiency See Figure 4 for Efficiency Curves	$V_{IN} = 48\text{V}$, $V_{OUT1} = 12\text{V}$, $I_{OUT} = 60\text{A}$		97.2		%

DEMO MANUAL

DC2190A-A/DC2190A-B

QUICK START PROCEDURE

Demonstration circuit DC2190A is easy to set up to evaluate the performance of the LTC3892-1. Refer to Figure 1 for proper measurement equipment setup and follow the procedure below.

NOTE: When measuring the input or output voltage ripple, care must be taken to avoid a long ground lead on the oscilloscope probe. Measure the input or output voltage ripple by touching the probe tip directly across the V_{IN} or V_{OUT} and GND terminals or directly across relevant capacitor. See Figure 2 for proper scope probe technique.

1. Place jumpers in the following positions:

JP1: Int. SYNC

JP2: ON

JP3: Int. (DC2190A-A Only)

2. With power off, connect the input power supply to V_{IN} and GND. Connect the load to the output. The load current should be smaller than 60A for DC2190A-A and smaller than 30A for DC2190A-B.

3. Turn on the power at the input.

NOTE: Make sure that the input voltage is between 16V and 55V.

4. Check for the proper output voltages.

$$V_{OUT} = 11.8V \text{ to } 12.2V$$

NOTE: If there is no output, temporarily disconnect the load to make sure that the load is not set too high.

5. Once the proper output voltages are established, adjust the loads within the operating range and observe the output voltage regulation, ripple voltage, efficiency and other parameters.

FREQUENCY SYNCHRONIZATION AND MODE SELECTION

The DC2190A's mode selector allows the converter to run in FCC operation, pulse-skip operation, Burst Mode or be synchronizing to an external clock by changing the position of JP1 and JP3.

For synchronizing to an external clock source, apply the external clock from SYNC turret to GND.

Refer to Table 1 and to the data sheet for more details.

Table 1. Mode Selection and Synchronizing Operation Options

CONFIGURATION	JP1	JP3 (DC2190A-A ONLY)
Forced Continuous Conduction Operation	Int. SYNC	Int.
Pulse-Skip Mode Operation	Ext. SYNC/ Pulse-Skip.	Ext./Pulse-Skip
Burst Mode Operation	Burst	Ext./Pulse-Skip
Synchronize to Ext. Clock (Ext. Clock Apply to SYNC Turret)	Ext. SYNC/ Pulse-Skip	Ext./Pulse-Skip

OPTIONAL INDUCTOR DCR CURRENT SENSING

Demonstration circuit 2190A provides an optional circuit for inductor DCR current sensing. Inductor DCR current sensing uses the DCR of the inductor to sense the inductor current instead of discrete sense resistors. The advantages of DCR sensing are lower cost, reduced board space and higher efficiency, but the disadvantage is a less accurate current limit. If DCR sensing is used, be sure to select an inductor with sufficiently high saturation current or use an iron powder type material.

Refer to Table 2 for optional inductor DCR current sensing setup and to the data sheet for more details.

POWER THE EXTV_{CC} FROM EXTERNAL SUPPLY

The DC2190A EXTV_{CC} turret is tied to the 12V V_{OUT} by default. To power the EXTV_{CC} from external supply:

1. Remove the R7.

2. Solder a 16V, 1 μ F MLCC between EXTV_{CC} and GND turret.

3. Apply a DC voltage (<14V) between the EXTV_{CC} and GND turret, after the input voltage is established. Ensure that $EXTV_{CC} \leq V_{IN}$.

QUICK START PROCEDURE

Table 2. Optional Inductor DCR Current Sensing

Configuration	CHANNEL1	RS1	R18	R20	C13	C29	R23	R26	R24
	CHANNEL2	RS2	R17	R19	C12	C28	R22	R25	R21
	CHANNEL3	RS3	R63	R64	C63	C45	R77	R79	R65
	CHANNEL4	RS4	R66	R67	C57	C48	R53	R54	R55
Current Sense Resistor (Default)		Ref. Sch.	Ref. Sch.	Ref. Sch.	Ref. Sch.	Open	Open	Open	Open
Inductor DCR Current Sensing		0Ω Copper	Open	Open	Ref. Sch.	Calculated Value from Data Sheet		0Ω	

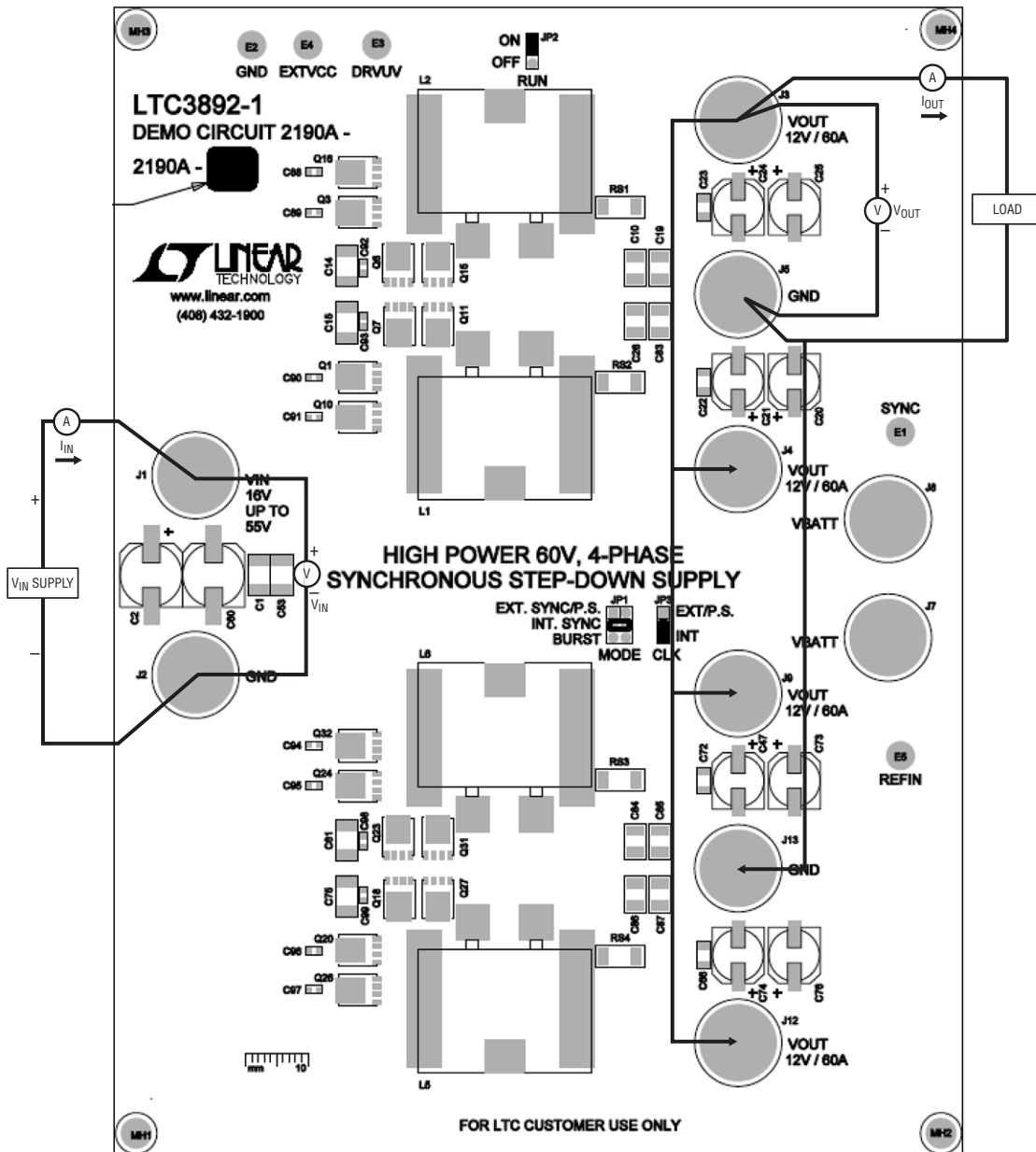


Figure 1. Proper Measurement Equipment Setup

QUICK START PROCEDURE

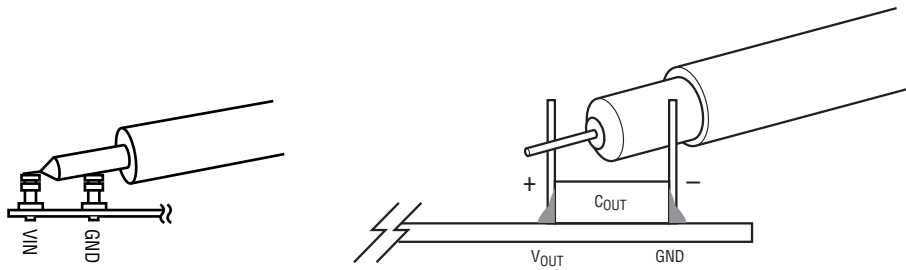
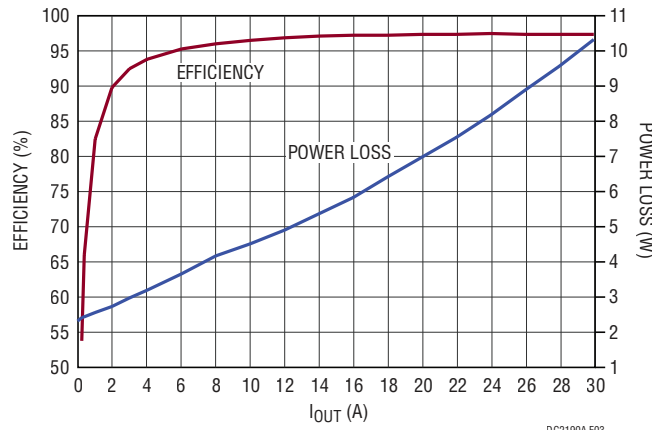
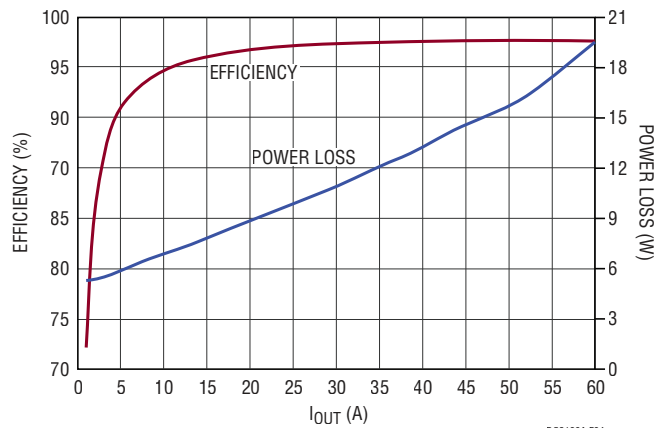


Figure 2. Measuring Input or Output Ripple Across Terminals or Directly Across Bulk Capacitor



DC2190A F03

Figure 3. Typical Efficiency vs Load Current (DC2190A-B, 2-Phase Solution, $V_{IN} = 48V$)



DC2190A F04

Figure 3. Typical Efficiency vs Load Current (DC2190A-A, 4-Phase Solution, $V_{IN} = 48V$)

PARTS LIST DC2190A-A

ITEM	QTY	REFERENCE	PART DESCRIPTION	MANUFACTURER/PART NUMBER
DC2190A-A Required Circuit Components				
1	10	C1, C14, C15, C16, C17, C53, C54, C55, C61, C75	CAP, 1812 2.2 μ F 10% 100V X7R	TDK C4532X7R2A225K
2	2	C2, C60	CAP, 100 μ F 20% 63V ELEC	SUN ELECT. 63CE100KX
3	2	C3, C49	CAP, 0805 0.1 μ F 10% 100V X7R	TDK C2012X7R2A104K
4	2	C4, C64	CQP, 0805 4.7 μ F 10% 16V X7R	AVX, 0805YC475KAT2A
4	8	C5, C32, C33, C39, C67, C78, C79, C80	CAP, 0603 0.1 μ F 10% 50V X7R	TDK C1608X7R1H104K
6	1	C6	CAP, 0603 470pF 10% 50V X7R	MURATA GRM188R71H471KA01D
7	1	C7	CAP, 0603 10pF 5% 50V NPO	AVX, 06035A100JAT2A
8	3	C8, C46, C62	CAP, 0603 47pF 5% 100V NPO	AVX 06031A470JAT2A
9	2	C9, C34	CAP, 0603 10nF 10% 100V X7R	AVX, 06031C103KAT2A
10	2	C11, C68	CAP, 0603 0.1 μ F 10% 100V X7R	MURATA GRM188R72A104KA35D
11	4	C12, C13, C57, C63	CAP, 0603 2.2pF 10% 100V NPO	AVX, 06031A2R2KAT2A
12	4	C18, C27, C59, C71	CAP, 0603 1 μ F 10% 16V X7R	AVX, 0603YC105KAT2A
13	4	C20, C25, C73, C76	CAP, 150 μ F 20% 16V ALUM	PANASONIC 16SVPC150M
14	4	C22, C23, C66, C72	CAP, 1206 10 μ F 10% 16V X7R	AVX, 1206YC106KAT2A
15	4	C30, C31, C51, C58	CAP, 0603 0.22 μ F 10% 25V X5R	AVX 06033D224KAT2A
16	2	C35, C36	CAP, 0603 1nF 10% 25V X7R	AVX 06033C102KAT2A
17	1	C37	CAP, 0603 100pF 10% 100V NPO	AVX, 06031A101KAT2A
18	2	C40, C100	CAP, 33 μ F 20% 63V ELEC	SUN ELECT., 63HVH33M
19	1	C69	CAP, 0603 4.7nF 10% 25V X7R	AVX, 06033C472KAT2A
20	27	R7, R12, R16, R17, R18, R27, R28, R44, R45, R49, R51, R57, R60, R64, R67, R74, R76, R80, R81, C81, R82, C82, R83, R84, R85, R89, R90	RES, 0603 0 Ω JUMPER	VISHAY CRCW06030000Z0EA
21	4	L1, L2, L5, L6	IND, 10 μ H	COILCRAFT SER2918H-103
22	8	Q1, Q2, Q3, Q4, Q17, Q20, Q22, Q24	XSTR, MOSFET N-CH 80V 100A TDSO8	INFINEON BSC123N08NS3 G
23	8	Q5, Q6, Q7, Q8, Q18, Q19, Q21, Q23	XSTR, MOSFET N-CH 80V 100A TDSO8	INFINEON BSC042NE7NS3
24	4	RS1, RS2, RS3, RS4	RES, 2010 0.003 Ω 1% 1W	VISHAY WSL20103L000FEA18
25	2	R_PRG1, R_PRG	RES, 0603 29.4k 1% 1/10W	VISHAY, CRCW060329K4FKEA
26	2	R1, R62	RES. 1206 2.2 Ω 1% 1/4W	VISHAY CRCW12062R20FKEA
27	1	R8	RES, 0603 100k 5% 1/10W	VISHAY CRCW0603100KJNEA
28	1	R9	RES, 0805 499k 1% 1/8W	VISHAY, CRCW0805499KFKEA
29	3	R10, R33, R37	RES, 0603 10 Ω 1% 1/10W	VISHAY CRCW060310R0FKEA
30	1	R11	RES, 0603 35.7k 1% 1/10W	VISHAY CRCW060335K7FKEA
31	1	R14	RES, 0603 1.5k 1% 1/10W	VISHAY CRCW06031K50FKEA
32	4	R19, R20, R63, R66	RES, 0603 100 Ω 5% 1/10W	VISHAY, CRCW0603100RJNEA
33	2	R30, R48	RES, 0603 90.9k 1% 1/10W	VISHAY CRCW060390K9FKEA
34	5	R32, R35, R38, R39, R40	RES, 0603 10k 1% 1/10W	VISHAY CRCW060310K0FKEA
35	4	R34, R43, R52, R86	RES, 2010 0.001 Ω 1% 1W	VISHAY, WSL20101L000FEA18
36	2	R36, R41	RES, 0603 392k 1% 1/10W	VISHAY CRCW0603392KFKEA

DEMO MANUAL

DC2190A-A/DC2190A-B

PARTS LIST DC2190A-A

ITEM	QTY	REFERENCE	PART DESCRIPTION	MANUFACTURER/PART NUMBER
37	1	R42	RES, 0603 3.3k 5% 1/10W	VISHAY CRCW06033K30JNEA
38	2	U1, U4	IC, DUAL OUTPUT HIGH VOLTAGE STEP-DOWN CONVERTER	LINEAR TECH. LTC3892EFE-1#PBF
39	0	C70	CAP, 100µF 20% 63V ELEC OPTION	SUN ELECT., 63CE100KX OPTION

DC2190A-A Additional Demo Board Circuit Components

40	1	U2	IC, HIGH VOLTAGE BIDIRECTIONAL CURRENT SENSE AMP	LINEAR TECH. LT1999CS8-10#PBF
41	1	U5	IC, OP AMP, COMPARATOR AND REFERENCE	LINEAR TECH. LTC1541CMS8#PBF
42	1	U6	IC, DUAL AND QUAD, SINGLE SUPPLY, PRECISION OP AMPS	LINEAR TECH. LT2078CS8#PBF
43	1	U7	IC, LOW POWER DUAL COMPARATORS WITH REFERENCE	LINEAR TECH. LTC1843CS8#PBF
44	1	U8	IC, MULTIPHASE OSCILLATOR WITH SPREAD SPECTRUM FREQUENCY MODULATION	LINEAR TECH. LTC6902CMS#PBF
45	0	Q9, Q10, Q11, Q12, Q13, Q14, Q15, Q16, Q25, Q26, Q27, Q28, Q29, Q30, Q31, Q32	XSTR, MOSFET OPTION	OPTION
46	1	Q33	XSTR, SMALL SIGNAL, NPN	DIODES INC. MMBT3904
47	0	Q34, R50, R59, R61	DO NOT STUFF	NONE
48	0	R2, R3, R4, R5, R13, R21, R22, R23, R24, R25, R26, R29, R31, R46, R53, R54, R55, R56, R65, R71, R72, R73, R77, R78, R79	RES, 0603 OPTION	OPTION
49	0	D1, D2, D3	DIODE, SCHOTTKY 30V, 100mA OPTION	CENTRAL SEMI CMDSH-3-TR OPTION
50	1	D4	DIODE, ZENER 5.1V	DIODES INC. MMSZ5231BS
51	0	L3, L4, L7, L8	IND, OPTION	OPTION
52	0	C28, C29, C45, C48, C50, C52, C56, C65, C77, C88, C89, C90, C91, C92, C93, C94, C95, C96, C97, C98, C99	CAP, 0603 OPTION	OPTION
53	0	C10, C19, C26, C38, C83, C84, C85, C86, C87	CAP, 1210 OPTION	OPTION
54	0	C21, C24, C41, C42, C43, C44, C47, C74	CAP, 150µF 20% 16V ALUM OPTION	PANASONIC 16SVPC150M OPTION
55	0	R47, R58	RES, 0603 10k 1% 1/10W OPTION	VISHAY CRCW060310K0FKEA OPTION

DC2190A-A Hardware

56	5	E1, E2, E3, E4, E5	TURRET	MIIL-MAX 2501-2-00-80-00-00-07-0
57	1	JP1	HEADER, 3-PIN, DBL ROW 2mm	SULLINS, NRPN032PAEN-RC
58	2	JP2, JP3	HEADER, 2mm, 3-PIN	SULLINS, NRPN031PAEN-RC
59	10	J1, J2, J3, J4, J5, J7, J8, J9, J12, J13	STUD, TESTPIN	PEM KFH-032-10
60	10		LUG RING, #10	KEYSTONE 8205
61	3	XJP1, XJP2, XJP3	SHUNT, 2mm	SAMTEC 2SN-BK-G
62	10		WASHER, #10 TIN PLATED BRASS	ANY #10 EXT BZ TN
63	4	MH1, MH2, MH3, MH4	STANDOFF, SNAP ON	KEYSTONE_8831
64	20		NUT, BRASS 10-32	ANY #10-32

DEMO MANUAL

DC2190A-A/DC2190A-B

PARTS LIST DC2190A-B

ITEM	QTY	REFERENCE	PART DESCRIPTION	MANUFACTURER/PART NUMBER
DC2190A-B Required Circuit Components				
1	5	C1, C14, C15, C16, C17	CAP, 1812 2.2μF 10% 100V X7R	TDK C4532X7R2A225K
2	1	C2	CAP, 100μF 20% 63V ELEC	SUN ELECT. 63CE100KX
3	1	C3	CAP, 0805 0.1μF 10% 100V X7R	TDK C2012X7R2A104K
4	1	C4	CQP, 0805 4.7μF 10% 16V X7R	AVX, 0805YC475KAT2A
5	7	C5, C32, C33, C39, C78, C79, C80	CAP, 0603 0.1μF 10% 50V X7R	TDK C1608X7R1H104K
6	1	C6	CAP, 0603 470pF 10% 50V X7R	MURATA GRM188R71H471KA01D
7	1	C7	CAP, 0603 15pF 5% 50V C0G	AVX 06035A150JAT4A
8	1	C8	CAP, 0603 47pF 5% 100V NPO	AVX 06031A470JAT2A
9	2	C9, C34	CAP, 0603 10nF 10% 100V X7R	AVX, 06031C103KAT2A
10	1	C11	CAP, 0603 0.1μF 10% 100V X7R	MURATA GRM188R72A104KA35D
11	2	C12, C13	CAP, 0603 2.2pF 10% 100V NPO	AVX, 06031A2R2KAT2A
12	2	C18, C27	CAP, 0603 1μF 10% 16V X7R	AVX, 0603YC105KAT2A
13	2	C20, C25	CAP, 150μF 20% 16V ALUM	PANASONIC 16SVPC150M
14	2	C22, C23	CAP, 1206 10μF 10% 16V X7R	AVX, 1206YC106KAT2A
15	2	C30, C31	CAP, 0603 0.22μF 10% 25V X5R	AVX 06033D224KAT2A
16	2	C35, C36	CAP, 0603 1nF 10% 25V X7R	AVX 06033C102KAT2A
17	1	C37	CAP, 0603 100pF 10% 100V NPO	AVX, 06031A101KAT2A
18	2	C40, C100	CAP, 33μF 20% 63V ELEC	SUN ELECT., 63HVH33M
19	1	C69	CAP, 0603 4.7nF 10% 25V X7R	AVX, 06033C472KAT2A
20	19	R7, R12, R16, R17, R18, R27, R28, R44, R45, R49, R81, C81, R82, C82, R83, R84, R85, R89, R90	RES, 0603 0Ω JUMPER	VISHAY CRCW06030000Z0EA
21	4	Q1, Q2, Q3, Q4	XSTR, MOSFET N-CH 80V 100A TDSO8	INFINEON BSC123N08NS3G
22	4	Q5, Q6, Q7, Q8	XSTR, MOSFET N-CH 80V 100A TDSO8	INFINEON BSC042NE7NS3
33	2	L1, L2	IND, 10μH	COILCRAFT SER2918H-103
24	2	RS1, RS2	RES, 2010 0.003Ω 1% 1W	VISHAY WSL20103L000FEA18
25	1	R_PRG	RES, 0603 29.4k 1% 1/10W	VISHAY, CRCW060329K4FKEA
26	1	R1	RES. 1206 2.2Ω 1% 1/4W	VISHAY CRCW12062R20FKEA
27	1	R8	RES, 0603 100k 5% 1/10W	VISHAY CRCW0603100KJNEA
28	1	R9	RES, 0805 499k 1% 1/8W	VISHAY, CRCW0805499KFKEA
29	3	R10, R33, R37	RES, 0603 10Ω 1% 1/10W	VISHAY CRCW060310R0FKEA
30	1	R11	RES, 0603 35.7k 1% 1/10W	VISHAY CRCW060335K7FKEA
31	1	R14	RES, 0603 4.02k 1% 1/10W	VISHAY CRCW06034K02FKEA
32	2	R19, R20	RES, 0603 100Ω 5% 1/10W	VISHAY, CRCW0603100RJNEA
33	1	R30	RES, 0603 90.9k 1% 1/10W	VISHAY CRCW060390K9FKEA
34	5	R32, R35, R38, R39, R40	RES, 0603 10k 1% 1/10W	VISHAY CRCW060310K0FKEA
35	4	R34, R43, R52, R86	RES, 2010 0.001Ω 1% 1W	VISHAY, WSL20101L000FEA18
36	2	R36, R41	RES, 0603 392k 1% 1/10W	VISHAY CRCW0603392KFKEA
37	1	R42	RES, 0603 3.3k 5% 1/10W	VISHAY CRCW06033K30JNEA
38	1	U1	IC, DUAL OUTPUT HIGH VOLTAGE STEP-DOWN CONVERTER	LINEAR TECH. LTC3892EFE-1#PBF

dc2190afa

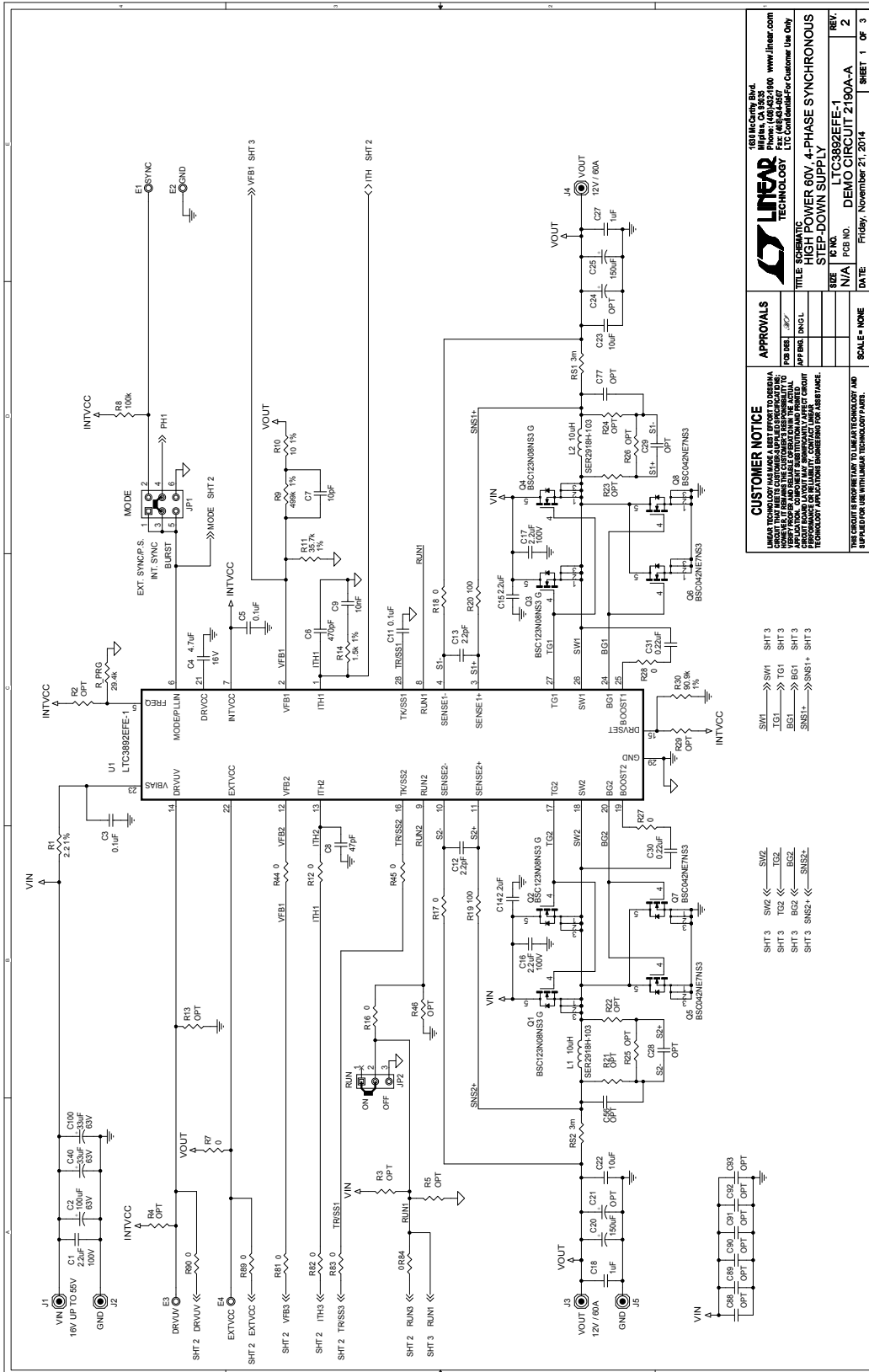
DEMO MANUAL

DC2190A-A/DC2190A-B

PARTS LIST DC2190A-B

ITEM	QTY	REFERENCE	PART DESCRIPTION	MANUFACTURER/PART NUMBER
DC2190A-B Additional Demo Board Circuit Components				
39	0	C10, C19, C26, C38, C83, C84, C85, C86, C87	CAP, 1210 OPTION	OPTION
40	0	C28, C29, C56, C77, C88, C89, C90, C91, C92, C93	CAP, 0603 OPTION	OPTION
41	0	L3, L4, L7, L8	IND, OPTION	OPTION
42	0	D1, D2, D3	DIODE, SCHOTTKY 30V, 100mA OPTION	CENTRAL SEMI CMDSH-3-TR OPTION
43	1	D4	DIODE, ZENER 5.1V	DIODES INC. MMSZ5231BS
44	0	C21, C24, C41, C42, C43, C44	CAP, 150µF 20% 16V ALUM OPTION	PANASONIC 16SVPC150M OPTION
45	0	Q9, Q10, Q11, Q12, Q13, Q14, Q15, Q16, Q25, Q26, Q27, Q28, Q29, Q30, Q31, Q32	XSTR, MOSFET OPTION	OPTION
46	1	Q33	XSTR, SMALL SIGNAL, NPN	DIODES INC. MMBT3904-7-F
47	0	Q34, R50, R59, R61	DO NOT STUFF	NONE
48	0	R2, R3, R4, R5, R13, R21, R22, R23, R24, R25, R26, R29, R31, R46	RES, 0603 OPTION	OPTION
49	0	R47, R58	RES, 0603 10k 1% 1/10W OPTION	VISHAY CRCW060310K0FKEA OPTION
50	1	U2	IC, HIGH VOLTAGE BIDIRECTIONAL CURRENT SENSE AMP	LINEAR TECH. LT1999CS8-10#PBF
51	1	U5	IC, MICROPOWER OP AMP, COMPARATOR AND REFERENCE	LINEAR TECH. LTC1541CMS8#PBF
52	1	U6	IC, DUAL AND QUAD, SINGLE SUPPLY, PRECISION OP AMPS	LINEAR TECH. LT2078CS8#PBF
53	1	U7	IC, LOW POWER DUAL COMPARATORS WITH REFERENCE	LINEAR TECH. LTC1843CS8#PBF
54	1	U8	IC, MULTIPHASE OSCILLATOR W/SPREAD SPECTRUM FREQUENCY MODULATION	LINEAR TECH. LTC6902CMS#PBF
DC2190A-B Hardware				
55	7		WASHER, #10 TIN PLATED BRASS	ANY #10 EXT BZ TN
56	2	XJP1, XJP2	SHUNT, 2mm	SAMTEC 2SN-BK-G
57	4	MH1, MH2, MH3, MH4	STANDOFF, SNAP ON	KEystone_8831
58	14		NUT, BRASS 10-32	ANY #10-32
59	5	E1, E2, E3, E4, E5	TURRET	MIIL-MAX 2501-2-00-80-00-00-07-0
60	1	JP1	HEADER, 3-PIN, DBL ROW 2mm	SULLINS, NRPNO32PAEN-RC
61	1	JP2	HEADER, 2mm, 3-PIN	SULLINS, NRPNO31PAEN-RC
62	7	J1, J2, J3, J4, J5, J7, J8	STUD, TESTPIN	PEM KFH-032-10
63	7		LUG RING, #10	KEystone 8205

SCHEMATIC DIAGRAM



LINER TECHNOLOGY
 13111 Alvarado Blvd.
 Milpitas, CA 95035
 Phone: (408)422-1900 www.linear.com

CUSTOMER NOTICE
 LINER TECHNOLOGY MAKES A BEST EFFORT TO DESIGN AND TEST THE PRODUCTS AND CIRCUITS SHOWN IN THIS SCHEMATIC. HOWEVER, IT REMAINS THE CUSTOMER'S RESPONSIBILITY TO APPLY THE PRODUCTS AND CIRCUITS SHOWN IN THIS SCHEMATIC TO THEIR APPLICATIONS. CUSTOMERS ARE ADVISED THAT THE PERFORMANCE OF THE PRODUCTS AND CIRCUITS SHOWN IN THIS SCHEMATIC IS SUBJECT TO THE CUSTOMER'S APPLICATION AND THE CUSTOMER'S DESIGN. CUSTOMERS SHOULD CONSULT WITH LINER TECHNOLOGY FOR APPLICATION-SPECIFIC DESIGN ASSISTANCE.

APPROVALS
 FOR DES: [Signature]
 FOR MFG: [Signature]

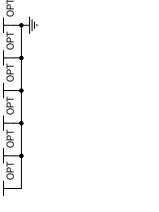
TITLE SCHEMATIC
HIGH POWER 80V, 4-PHASE SYNCHRONOUS STEP-DOWN SUPPLY

REV: N/A
 DATE: Friday, November 21, 2014

SCALE: NONE

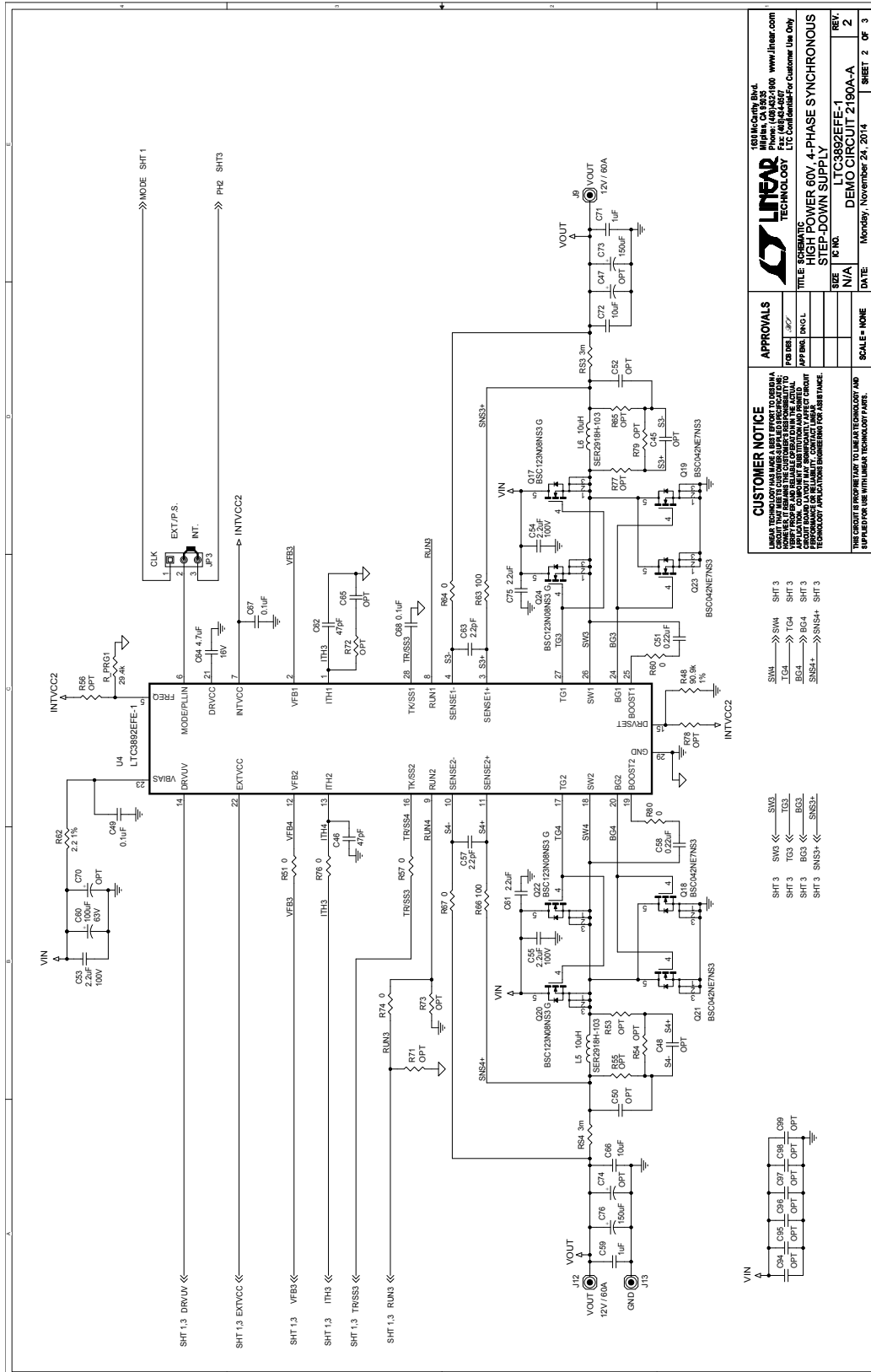
REV: 2
 PCB NO.: DEMO CIRCUIT 2190A-A
 SHEET 1 OF 3

- SW1 → SW1 SHT 3
- TG1 → TG1 SHT 3
- BG1 → BG1 SHT 3
- BS1+ → BS1+ SHT 3
- SW2 → SW2 SHT 3
- TG2 → TG2 SHT 3
- BG2 → BG2 SHT 3
- BS2+ → BS2+ SHT 3



DEMO MANUAL DC2190A-A/DC2190A-B

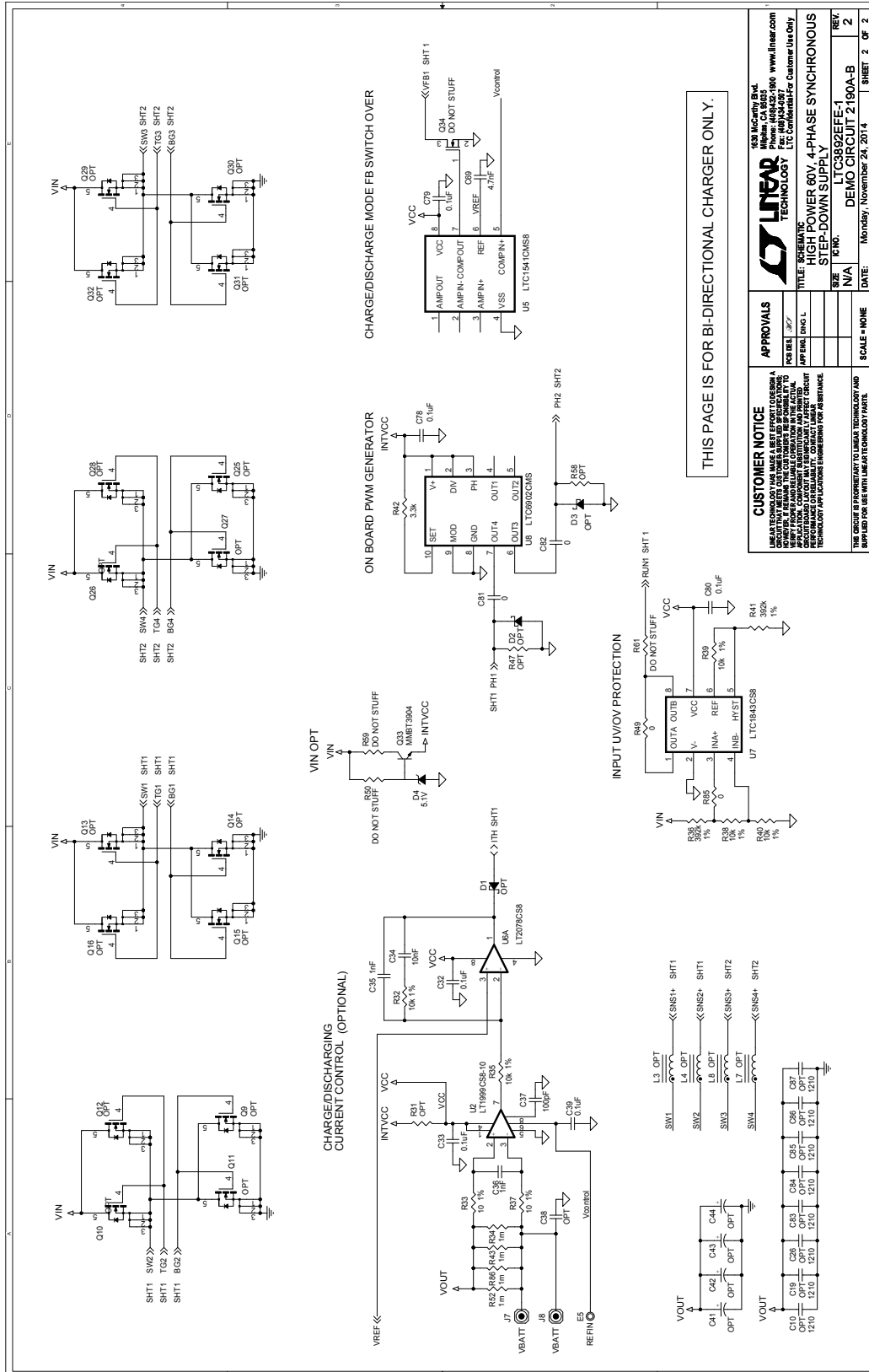
SCHEMATIC DIAGRAM



CUSTOMER NOTICE	
LINEAR TECHNOLOGY MAKES A BEST EFFORT TO DESIGN AND TEST THE SCHEMATIC AND BOARD FILES TO BE ACCURATE. HOWEVER, THE CUSTOMER ASSUMES ALL LIABILITY FOR ANY DAMAGE TO PERSONS OR PROPERTY, INCLUDING THE LOSS OF PROFITS, ARISING FROM THE USE OF THE SCHEMATIC AND BOARD FILES. LINEAR TECHNOLOGY MAKES NO WARRANTY, REPRESENTATION OR GUARANTEE OF ANY KIND, INCLUDING MERCHANTABILITY, FITNESS FOR A PARTICULAR PURPOSE, OR PERFORMANCE OF ANY KIND, REGARDLESS OF THE TYPE OF CONTRACT, WHETHER WRITTEN OR ORAL.	
THIS CIRCUIT IS PROPRIETARY TO LINEAR TECHNOLOGY AND IS SUPPLIED FOR USE WITH LINEAR TECHNOLOGY PARTS.	
APPROVALS	SCALE = NONE
FOR DES. <input type="checkbox"/>	
FOR PCB <input type="checkbox"/>	
FOR BOM <input type="checkbox"/>	
FOR MFG <input type="checkbox"/>	
FOR SMT <input type="checkbox"/>	
FOR TEST <input type="checkbox"/>	
FOR MISC <input type="checkbox"/>	
DATE	Monday, November 24, 2014
REV.	2
SHEET	2 OF 3

SW1 → SW2
 SW3 → SW4
 SW5 → SW6
 SW7 → SW8
 SW9 → SW10
 SW11 → SW12
 SW13 → SW14
 SW15 → SW16
 SW17 → SW18
 SW19 → SW20
 SW21 → SW22
 SW23 → SW24
 SW25 → SW26
 SW27 → SW28
 SW29 → SW30
 SW31 → SW32
 SW33 → SW34
 SW35 → SW36
 SW37 → SW38
 SW39 → SW40
 SW41 → SW42
 SW43 → SW44
 SW45 → SW46
 SW47 → SW48
 SW49 → SW50
 SW51 → SW52
 SW53 → SW54
 SW55 → SW56
 SW57 → SW58
 SW59 → SW60
 SW61 → SW62
 SW63 → SW64
 SW65 → SW66
 SW67 → SW68
 SW69 → SW70
 SW71 → SW72
 SW73 → SW74
 SW75 → SW76
 SW77 → SW78
 SW79 → SW80
 SW81 → SW82
 SW83 → SW84
 SW85 → SW86
 SW87 → SW88
 SW89 → SW90
 SW91 → SW92
 SW93 → SW94
 SW95 → SW96
 SW97 → SW98
 SW99 → SW100
 SW101 → SW102
 SW103 → SW104
 SW105 → SW106
 SW107 → SW108
 SW109 → SW110
 SW111 → SW112
 SW113 → SW114
 SW115 → SW116
 SW117 → SW118
 SW119 → SW120
 SW121 → SW122
 SW123 → SW124
 SW125 → SW126
 SW127 → SW128
 SW129 → SW130
 SW131 → SW132
 SW133 → SW134
 SW135 → SW136
 SW137 → SW138
 SW139 → SW140
 SW141 → SW142
 SW143 → SW144
 SW145 → SW146
 SW147 → SW148
 SW149 → SW150
 SW151 → SW152
 SW153 → SW154
 SW155 → SW156
 SW157 → SW158
 SW159 → SW160
 SW161 → SW162
 SW163 → SW164
 SW165 → SW166
 SW167 → SW168
 SW169 → SW170
 SW171 → SW172
 SW173 → SW174
 SW175 → SW176
 SW177 → SW178
 SW179 → SW180
 SW181 → SW182
 SW183 → SW184
 SW185 → SW186
 SW187 → SW188
 SW189 → SW190
 SW191 → SW192
 SW193 → SW194
 SW195 → SW196
 SW197 → SW198
 SW199 → SW200
 SW201 → SW202
 SW203 → SW204
 SW205 → SW206
 SW207 → SW208
 SW209 → SW210
 SW211 → SW212
 SW213 → SW214
 SW215 → SW216
 SW217 → SW218
 SW219 → SW220
 SW221 → SW222
 SW223 → SW224
 SW225 → SW226
 SW227 → SW228
 SW229 → SW230
 SW231 → SW232
 SW233 → SW234
 SW235 → SW236
 SW237 → SW238
 SW239 → SW240
 SW241 → SW242
 SW243 → SW244
 SW245 → SW246
 SW247 → SW248
 SW249 → SW250
 SW251 → SW252
 SW253 → SW254
 SW255 → SW256
 SW257 → SW258
 SW259 → SW260
 SW261 → SW262
 SW263 → SW264
 SW265 → SW266
 SW267 → SW268
 SW269 → SW270
 SW271 → SW272
 SW273 → SW274
 SW275 → SW276
 SW277 → SW278
 SW279 → SW280
 SW281 → SW282
 SW283 → SW284
 SW285 → SW286
 SW287 → SW288
 SW289 → SW290
 SW291 → SW292
 SW293 → SW294
 SW295 → SW296
 SW297 → SW298
 SW299 → SW300
 SW301 → SW302
 SW303 → SW304
 SW305 → SW306
 SW307 → SW308
 SW309 → SW310
 SW311 → SW312
 SW313 → SW314
 SW315 → SW316
 SW317 → SW318
 SW319 → SW320
 SW321 → SW322
 SW323 → SW324
 SW325 → SW326
 SW327 → SW328
 SW329 → SW330
 SW331 → SW332
 SW333 → SW334
 SW335 → SW336
 SW337 → SW338
 SW339 → SW340
 SW341 → SW342
 SW343 → SW344
 SW345 → SW346
 SW347 → SW348
 SW349 → SW350
 SW351 → SW352
 SW353 → SW354
 SW355 → SW356
 SW357 → SW358
 SW359 → SW360
 SW361 → SW362
 SW363 → SW364
 SW365 → SW366
 SW367 → SW368
 SW369 → SW370
 SW371 → SW372
 SW373 → SW374
 SW375 → SW376
 SW377 → SW378
 SW379 → SW380
 SW381 → SW382
 SW383 → SW384
 SW385 → SW386
 SW387 → SW388
 SW389 → SW390
 SW391 → SW392
 SW393 → SW394
 SW395 → SW396
 SW397 → SW398
 SW399 → SW400
 SW401 → SW402
 SW403 → SW404
 SW405 → SW406
 SW407 → SW408
 SW409 → SW410
 SW411 → SW412
 SW413 → SW414
 SW415 → SW416
 SW417 → SW418
 SW419 → SW420
 SW421 → SW422
 SW423 → SW424
 SW425 → SW426
 SW427 → SW428
 SW429 → SW430
 SW431 → SW432
 SW433 → SW434
 SW435 → SW436
 SW437 → SW438
 SW439 → SW440
 SW441 → SW442
 SW443 → SW444
 SW445 → SW446
 SW447 → SW448
 SW449 → SW450
 SW451 → SW452
 SW453 → SW454
 SW455 → SW456
 SW457 → SW458
 SW459 → SW460
 SW461 → SW462
 SW463 → SW464
 SW465 → SW466
 SW467 → SW468
 SW469 → SW470
 SW471 → SW472
 SW473 → SW474
 SW475 → SW476
 SW477 → SW478
 SW479 → SW480
 SW481 → SW482
 SW483 → SW484
 SW485 → SW486
 SW487 → SW488
 SW489 → SW490
 SW491 → SW492
 SW493 → SW494
 SW495 → SW496
 SW497 → SW498
 SW499 → SW500
 SW501 → SW502
 SW503 → SW504
 SW505 → SW506
 SW507 → SW508
 SW509 → SW510
 SW511 → SW512
 SW513 → SW514
 SW515 → SW516
 SW517 → SW518
 SW519 → SW520
 SW521 → SW522
 SW523 → SW524
 SW525 → SW526
 SW527 → SW528
 SW529 → SW530
 SW531 → SW532
 SW533 → SW534
 SW535 → SW536
 SW537 → SW538
 SW539 → SW540
 SW541 → SW542
 SW543 → SW544
 SW545 → SW546
 SW547 → SW548
 SW549 → SW550
 SW551 → SW552
 SW553 → SW554
 SW555 → SW556
 SW557 → SW558
 SW559 → SW560
 SW561 → SW562
 SW563 → SW564
 SW565 → SW566
 SW567 → SW568
 SW569 → SW570
 SW571 → SW572
 SW573 → SW574
 SW575 → SW576
 SW577 → SW578
 SW579 → SW580
 SW581 → SW582
 SW583 → SW584
 SW585 → SW586
 SW587 → SW588
 SW589 → SW590
 SW591 → SW592
 SW593 → SW594
 SW595 → SW596
 SW597 → SW598
 SW599 → SW600
 SW601 → SW602
 SW603 → SW604
 SW605 → SW606
 SW607 → SW608
 SW609 → SW610
 SW611 → SW612
 SW613 → SW614
 SW615 → SW616
 SW617 → SW618
 SW619 → SW620
 SW621 → SW622
 SW623 → SW624
 SW625 → SW626
 SW627 → SW628
 SW629 → SW630
 SW631 → SW632
 SW633 → SW634
 SW635 → SW636
 SW637 → SW638
 SW639 → SW640
 SW641 → SW642
 SW643 → SW644
 SW645 → SW646
 SW647 → SW648
 SW649 → SW650
 SW651 → SW652
 SW653 → SW654
 SW655 → SW656
 SW657 → SW658
 SW659 → SW660
 SW661 → SW662
 SW663 → SW664
 SW665 → SW666
 SW667 → SW668
 SW669 → SW670
 SW671 → SW672
 SW673 → SW674
 SW675 → SW676
 SW677 → SW678
 SW679 → SW680
 SW681 → SW682
 SW683 → SW684
 SW685 → SW686
 SW687 → SW688
 SW689 → SW690
 SW691 → SW692
 SW693 → SW694
 SW695 → SW696
 SW697 → SW698
 SW699 → SW700
 SW701 → SW702
 SW703 → SW704
 SW705 → SW706
 SW707 → SW708
 SW709 → SW710
 SW711 → SW712
 SW713 → SW714
 SW715 → SW716
 SW717 → SW718
 SW719 → SW720
 SW721 → SW722
 SW723 → SW724
 SW725 → SW726
 SW727 → SW728
 SW729 → SW730
 SW731 → SW732
 SW733 → SW734
 SW735 → SW736
 SW737 → SW738
 SW739 → SW740
 SW741 → SW742
 SW743 → SW744
 SW745 → SW746
 SW747 → SW748
 SW749 → SW750
 SW751 → SW752
 SW753 → SW754
 SW755 → SW756
 SW757 → SW758
 SW759 → SW760
 SW761 → SW762
 SW763 → SW764
 SW765 → SW766
 SW767 → SW768
 SW769 → SW770
 SW771 → SW772
 SW773 → SW774
 SW775 → SW776
 SW777 → SW778
 SW779 → SW780
 SW781 → SW782
 SW783 → SW784
 SW785 → SW786
 SW787 → SW788
 SW789 → SW790
 SW791 → SW792
 SW793 → SW794
 SW795 → SW796
 SW797 → SW798
 SW799 → SW800
 SW801 → SW802
 SW803 → SW804
 SW805 → SW806
 SW807 → SW808
 SW809 → SW810
 SW811 → SW812
 SW813 → SW814
 SW815 → SW816
 SW817 → SW818
 SW819 → SW820
 SW821 → SW822
 SW823 → SW824
 SW825 → SW826
 SW827 → SW828
 SW829 → SW830
 SW831 → SW832
 SW833 → SW834
 SW835 → SW836
 SW837 → SW838
 SW839 → SW840
 SW841 → SW842
 SW843 → SW844
 SW845 → SW846
 SW847 → SW848
 SW849 → SW850
 SW851 → SW852
 SW853 → SW854
 SW855 → SW856
 SW857 → SW858
 SW859 → SW860
 SW861 → SW862
 SW863 → SW864
 SW865 → SW866
 SW867 → SW868
 SW869 → SW870
 SW871 → SW872
 SW873 → SW874
 SW875 → SW876
 SW877 → SW878
 SW879 → SW880
 SW881 → SW882
 SW883 → SW884
 SW885 → SW886
 SW887 → SW888
 SW889 → SW890
 SW891 → SW892
 SW893 → SW894
 SW895 → SW896
 SW897 → SW898
 SW899 → SW900
 SW901 → SW902
 SW903 → SW904
 SW905 → SW906
 SW907 → SW908
 SW909 → SW910
 SW911 → SW912
 SW913 → SW914
 SW915 → SW916
 SW917 → SW918
 SW919 → SW920
 SW921 → SW922
 SW923 → SW924
 SW925 → SW926
 SW927 → SW928
 SW929 → SW930
 SW931 → SW932
 SW933 → SW934
 SW935 → SW936
 SW937 → SW938
 SW939 → SW940
 SW941 → SW942
 SW943 → SW944
 SW945 → SW946
 SW947 → SW948
 SW949 → SW950
 SW951 → SW952
 SW953 → SW954
 SW955 → SW956
 SW957 → SW958
 SW959 → SW960
 SW961 → SW962
 SW963 → SW964
 SW965 → SW966
 SW967 → SW968
 SW969 → SW970
 SW971 → SW972
 SW973 → SW974
 SW975 → SW976
 SW977 → SW978
 SW979 → SW980
 SW981 → SW982
 SW983 → SW984
 SW985 → SW986
 SW987 → SW988
 SW989 → SW990
 SW991 → SW992
 SW993 → SW994
 SW995 → SW996
 SW997 → SW998
 SW999 → SW1000
 SW1001 → SW1002
 SW1003 → SW1004
 SW1005 → SW1006
 SW1007 → SW1008
 SW1009 → SW1010
 SW1011 → SW1012
 SW1013 → SW1014
 SW1015 → SW1016
 SW1017 → SW1018
 SW1019 → SW1020
 SW1021 → SW1022
 SW1023 → SW1024
 SW1025 → SW1026
 SW1027 → SW1028
 SW1029 → SW1030
 SW1031 → SW1032
 SW1033 → SW1034
 SW1035 → SW1036
 SW1037 → SW1038
 SW1039 → SW1040
 SW1041 → SW1042
 SW1043 → SW1044
 SW1045 → SW1046
 SW1047 → SW1048
 SW1049 → SW1050
 SW1051 → SW1052
 SW1053 → SW1054
 SW1055 → SW1056
 SW1057 → SW1058
 SW1059 → SW1060
 SW1061 → SW1062
 SW1063 → SW1064
 SW1065 → SW1066
 SW1067 → SW1068
 SW1069 → SW1070
 SW1071 → SW1072
 SW1073 → SW1074
 SW1075 → SW1076
 SW1077 → SW1078
 SW1079 → SW1080
 SW1081 → SW1082
 SW1083 → SW1084
 SW1085 → SW1086
 SW1087 → SW1088
 SW1089 → SW1090
 SW1091 → SW1092
 SW1093 → SW1094
 SW1095 → SW1096
 SW1097 → SW1098
 SW1099 → SW1100
 SW1101 → SW1102
 SW1103 → SW1104
 SW1105 → SW1106
 SW1107 → SW1108
 SW1109 → SW1110
 SW1111 → SW1112
 SW1113 → SW1114
 SW1115 → SW1116
 SW1117 → SW1118
 SW1119 → SW1120
 SW1121 → SW1122
 SW1123 → SW1124
 SW1125 → SW1126
 SW1127 → SW1128
 SW1129 → SW1130
 SW1131 → SW1132
 SW1133 → SW1134
 SW1135 → SW1136
 SW1137 → SW1138
 SW1139 → SW1140
 SW1141 → SW1142
 SW1143 → SW1144
 SW1145 → SW1146
 SW1147 → SW1148
 SW1149 → SW1150
 SW1151 → SW1152
 SW1153 → SW1154
 SW1155 → SW1156
 SW1157 → SW1158
 SW1159 → SW1160
 SW1161 → SW1162
 SW1163 → SW1164
 SW1165 → SW1166
 SW1167 → SW1168
 SW1169 → SW1170
 SW1171 → SW1172
 SW1173 → SW1174
 SW1175 → SW1176
 SW1177 → SW1178
 SW1179 → SW1180
 SW1181 → SW1182
 SW1183 → SW1184
 SW1185 → SW1186
 SW1187 → SW1188
 SW1189 → SW1190
 SW1191 → SW1192
 SW1193 → SW1194
 SW1195 → SW1196
 SW1197 → SW1198
 SW1199 → SW1200
 SW1201 → SW1202
 SW1203 → SW1204
 SW1205 → SW1206
 SW1207 → SW1208
 SW1209 → SW1210
 SW1211 → SW1212
 SW1213 → SW1214
 SW1215 → SW1216
 SW1217 → SW1218
 SW1219 → SW1220
 SW1221 → SW1222
 SW1223 → SW1224
 SW1225 → SW1226
 SW1227 → SW1228
 SW1229 → SW1230
 SW1231 → SW1232
 SW1233 → SW1234
 SW1235 → SW1236
 SW1237 → SW1238
 SW1239 → SW1240
 SW1241 → SW1242
 SW1243 → SW1244
 SW1245 → SW1246
 SW1247 → SW1248
 SW1249 → SW1250
 SW1251 → SW1252
 SW1253 → SW1254
 SW1255 → SW1256
 SW1257 → SW1258
 SW1259 → SW1260
 SW1261 → SW1262
 SW1263 → SW1264
 SW1265 → SW1266
 SW1267 → SW1268
 SW1269 → SW1270
 SW1271 → SW1272
 SW1273 → SW1274
 SW1275 → SW1276
 SW1277 → SW1278
 SW1279 → SW1280
 SW1281 → SW1282
 SW1283 → SW1284
 SW1285 → SW1286
 SW1287 → SW1288
 SW1289 → SW1290
 SW1291 → SW1292
 SW1293 → SW1294
 SW1295 → SW1296
 SW1297 → SW1298
 SW1299 → SW1300
 SW1301 → SW1302
 SW1303 → SW1304
 SW1305 → SW1306
 SW1307 → SW1308
 SW1309 → SW1310
 SW1311 → SW1312
 SW1313 → SW1314
 SW1315 → SW1316
 SW1317 → SW1318
 SW1319 → SW1320
 SW1321 → SW1322
 SW1323 → SW1324
 SW1325 → SW1326
 SW1327 → SW1328
 SW1329 → SW1330
 SW1331 → SW1332
 SW1333 → SW1334
 SW1335 → SW1336
 SW1337 → SW1338
 SW1339 → SW1340
 SW1341 → SW1342
 SW1343 → SW1344
 SW1345 → SW1346
 SW1347 → SW1348
 SW1349 → SW1350
 SW1351 → SW1352
 SW1353 → SW1354
 SW1355 → SW1356
 SW1357 → SW1358
 SW1359 → SW1360
 SW1361 → SW1362
 SW1363 → SW1364

SCHEMATIC DIAGRAM



DEMO MANUAL

DC2190A-A/DC2190A-B

DEMONSTRATION BOARD IMPORTANT NOTICE

Linear Technology Corporation (LTC) provides the enclosed product(s) under the following **AS IS** conditions:

This demonstration board (DEMO BOARD) kit being sold or provided by Linear Technology is intended for use for **ENGINEERING DEVELOPMENT OR EVALUATION PURPOSES ONLY** and is not provided by LTC for commercial use. As such, the DEMO BOARD herein may not be complete in terms of required design-, marketing-, and/or manufacturing-related protective considerations, including but not limited to product safety measures typically found in finished commercial goods. As a prototype, this product does not fall within the scope of the European Union directive on electromagnetic compatibility and therefore may or may not meet the technical requirements of the directive, or other regulations.

If this evaluation kit does not meet the specifications recited in the DEMO BOARD manual the kit may be returned within 30 days from the date of delivery for a full refund. **THE FOREGOING WARRANTY IS THE EXCLUSIVE WARRANTY MADE BY THE SELLER TO BUYER AND IS IN LIEU OF ALL OTHER WARRANTIES, EXPRESSED, IMPLIED, OR STATUTORY, INCLUDING ANY WARRANTY OF MERCHANTABILITY OR FITNESS FOR ANY PARTICULAR PURPOSE. EXCEPT TO THE EXTENT OF THIS INDEMNITY, NEITHER PARTY SHALL BE LIABLE TO THE OTHER FOR ANY INDIRECT, SPECIAL, INCIDENTAL, OR CONSEQUENTIAL DAMAGES.**

The user assumes all responsibility and liability for proper and safe handling of the goods. Further, the user releases LTC from all claims arising from the handling or use of the goods. Due to the open construction of the product, it is the user's responsibility to take any and all appropriate precautions with regard to electrostatic discharge. Also be aware that the products herein may not be regulatory compliant or agency certified (FCC, UL, CE, etc.).

No License is granted under any patent right or other intellectual property whatsoever. **LTC assumes no liability for applications assistance, customer product design, software performance, or infringement of patents or any other intellectual property rights of any kind.**

LTC currently services a variety of customers for products around the world, and therefore this transaction **is not exclusive**.

Please read the DEMO BOARD manual prior to handling the product. Persons handling this product must have electronics training and observe good laboratory practice standards. **Common sense is encouraged.**

This notice contains important safety information about temperatures and voltages. For further safety concerns, please contact a LTC application engineer.

Mailing Address:

Linear Technology
1630 McCarthy Blvd.
Milpitas, CA 95035

Copyright © 2004, Linear Technology Corporation