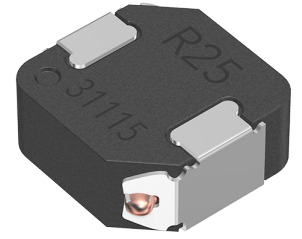


Applications	Commercial Grade
Feature	<div style="border: 1px solid red; padding: 2px;">Wire Wound</div> Wire Wound <div style="border: 1px solid green; padding: 2px;">Shield</div> Magnetic Shield <div style="border: 1px solid gray; padding: 2px;">Metal Core</div> Metal Core
Series Type	SPM
Status	Production
Brand	TDK



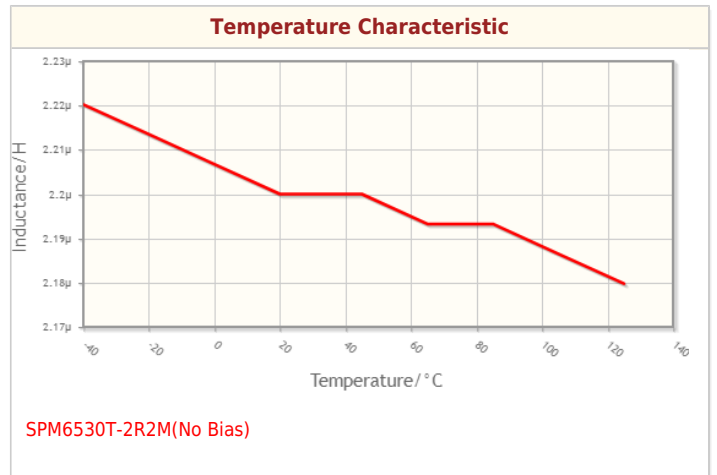
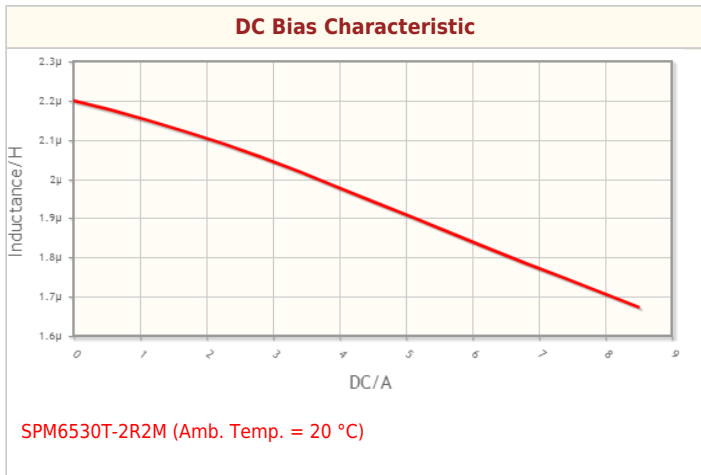
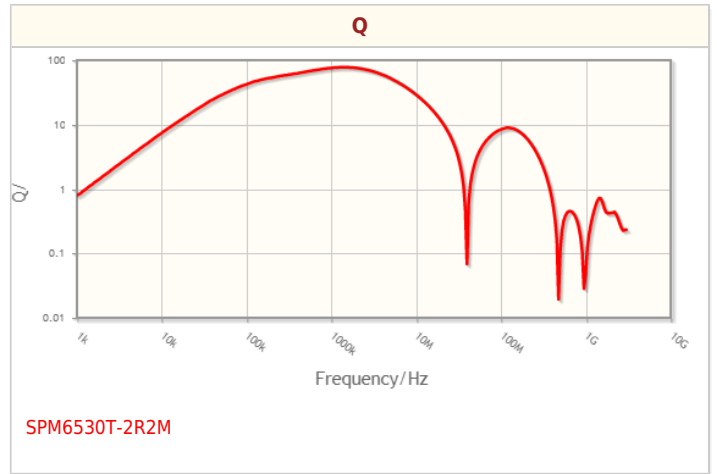
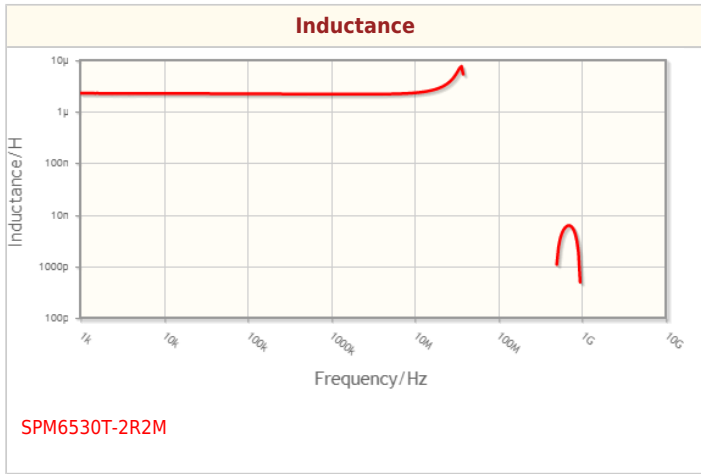
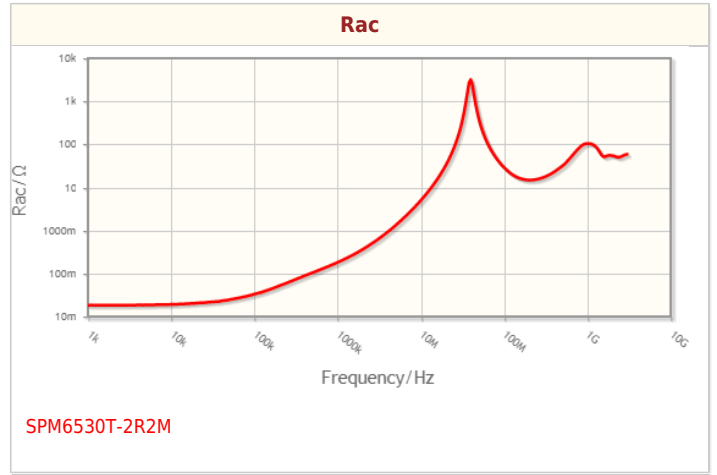
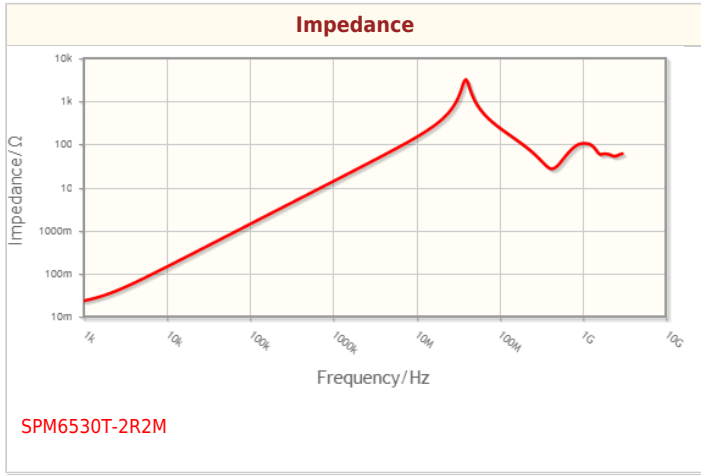
Size	
Length(L)	7.10mm ±0.30mm
Width(W)	6.50mm ±0.30mm
Thickness Height	3.00mm Max.
Recommended Land Pattern (A)	1.85mm Nom.
Recommended Land Pattern (B)	3.70mm Nom.
Recommended Land Pattern (C)	3.40mm Nom.

Electrical Characteristics	
Inductance	2.2µH ±20% at 100kHz
Rated Current (L Change) [Typ.]	8.4A (20% Down)
Rated Current (L Change) [Max.]	
Rated Current (Temperature Rise) [Typ.]	8.2A (40°C Rise)
Rated Current (Temperature Rise) [Max.]	
DC Resistance [Typ.]	17.3mΩ
DC Resistance [Max.]	19.1mΩ
Self Resonant Frequency [Min.]	
Self Resonant Frequency [Typ.]	
Q [Min.]	
Q [Typ.]	

Other	
Operating Temp. Range (Including Self-Temp. Rise)	-40 to 125°C
Soldering Method	Reflow
	Iron Soldering
AEC-Q200	NO
Packing	Embossed (Plastic)Taping [330mm Reel, Tape width 16mm]
Package Quantity	1000pcs
Weight	0.656g

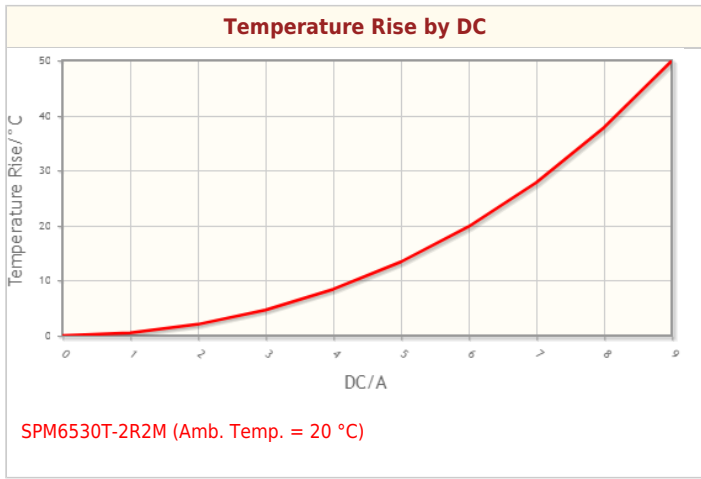
! Images are for reference only and show exemplary products.
 ! This PDF document was created based on the data listed on the TDK Corporation website.
 ! All specifications are subject to change without notice.

Characteristic Graphs(This is reference data, and does not guarantee the products characteristics.)



! Images are for reference only and show exemplary products.
! This PDF document was created based on the data listed on the TDK Corporation website.
! All specifications are subject to change without notice.

Characteristic Graphs(This is reference data, and does not guarantee the products characteristics.)



! Images are for reference only and show exemplary products.
! This PDF document was created based on the data listed on the TDK Corporation website.
! All specifications are subject to change without notice.

Associated Images

