

SMD Inductors(Coils) For Power Line(Wound)

Conformity to RoHS Directive

VLP Series VLP5614

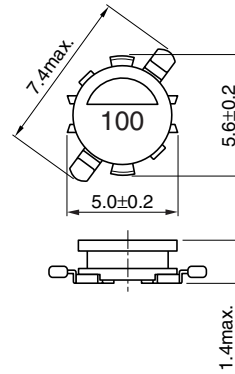
FEATURES

- Miniature size
Mount area: 5.0×5.6mm
Low profile: 1.4mm max. height
- Generic use for portable DC to DC converter line
- High rated DC current
- Non-ferrite shielded component
- Available for automatic mounting in tape and reel package.
- The products do not contain lead and support lead-free soldering.

APPLICATIONS

- DC to DC converters for TFT, LCD, LCD TV, PDA
- DC to DC converters for mobile phone, LCD driver circuit, etc.

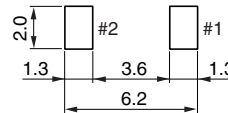
SHAPES AND DIMENSIONS



Dimensions in mm



RECOMMENDED PC BOARD PATTERN



Dimensions in mm

ELECTRICAL CHARACTERISTICS

Part No.	Inductance (μH)	Inductance tolerance(%)	Test frequency (kHz)	DC resistance (Ω)max.	Rated current(A)*	
					Based on inductance change max.	Based on temperature rise typ.
VLP5614T-3R3M1R2	3.3	±20	100	0.13	1.53	1.22
VLP5614T-4R7M1R0	4.7	±20	100	0.16	1.34	1.07
VLP5614T-6R8MR91	6.8	±20	100	0.23	1.14	0.91
VLP5614T-100MR72	10.0	±20	100	0.36	0.90	0.72
VLP5614T-150MR63	15.0	±20	100	0.48	0.79	0.63
VLP5614T-220MR49	22.0	±20	100	0.78	0.61	0.49
VLP5614T-330MR41	33.0	±20	100	1.11	0.51	0.41
VLP5614T-470MR35	47.0	±20	100	1.56	0.44	0.35
VLP5614T-680MR28	68.0	±20	100	2.35	0.35	0.28
VLP5614T-820MR26	82.0	±20	100	2.81	0.33	0.26
VLP5614T-101MR23	100	±20	100	3.47	0.29	0.23
VLP5614T-151MR19	150	±20	100	5.21	0.24	0.19

* Rated current: Value obtained when current flows and the temperature has risen to 40°C or when DC current flows and the nominal value of inductance has fallen by 10%, whichever is smaller.

• Conformity to RoHS Directive: This means that, in conformity with EU Directive 2002/95/EC, lead, cadmium, mercury, hexavalent chromium, and specific bromine-based flame retardants, PBB and PBDE, have not been used, except for exempted applications.

• All specifications are subject to change without notice.