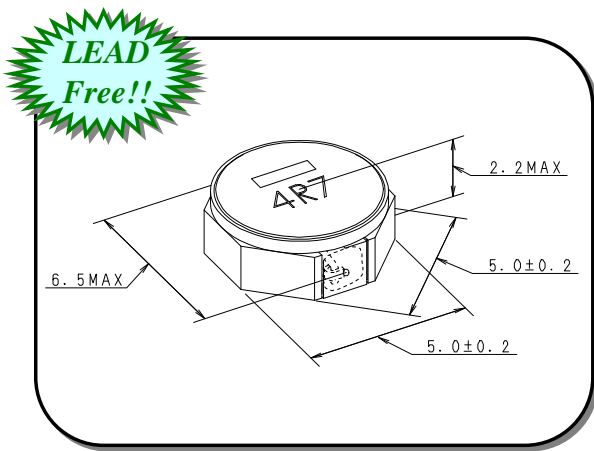


LTF 5022-D Series SMD Power Inductor

Component Image Fig



Unit:mm

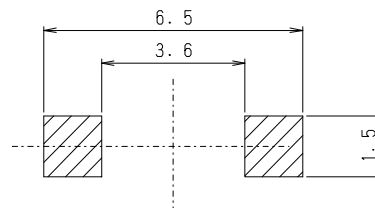
Feature

- a) Miniature Size :
Mount Area : 5.0mm x 5.0mm
Low Profile : 2.2mm Max. Height
- b) Generic use for portable DC/DC Converter Line.
- c) Low Profile as a 2.2mm Height.
- d) High Rated DC Current.
- e) This Product is not used any of the LEAD Materials.
- f) Ferrite shielded component.
- g) Automatic Mounting in Tape & Reel Package.
- h) Qualified acc. AEC-Q200

Applications :

Automotive

Recommended Land Pattern



Electrical Specification

| TDK Identification | Inductance[uH] | Test Freq. (MHz) | DC Resistance[ohm] | | Rated DC Current[A] | |
|---------------------|----------------|------------------|--------------------|--------|---------------------|--------------|
| | Tol. (%) | | Spec. (max.) | (Typ.) | Idc 1 (max.) | Idc 2 (Typ.) |
| LTF5022T- 1R2N3R4-D | 1.2 +/-30% | 1 | 0.031 | 0.025 | 3.87 | 3.43 |
| LTF5022T- 1R8N3R1-D | 1.8 +/-30% | 1 | 0.037 | 0.030 | 3.28 | 3.12 |
| LTF5022T- 2R2N2R8-D | 2.2 +/-30% | 1 | 0.043 | 0.036 | 2.84 | 2.88 |
| LTF5022T- 3R3N2R5-D | 3.3 +/-30% | 1 | 0.050 | 0.041 | 2.51 | 2.68 |
| LTF5022T- 4R7N2R0-D | 4.7 +/-30% | 1 | 0.074 | 0.062 | 2.03 | 2.18 |
| LTF5022T- 6R8N1R7-D | 6.8 +/-30% | 1 | 0.11 | 0.091 | 1.70 | 1.80 |
| LTF5022T- 100M1R3-D | 10 +/-20% | 1 | 0.16 | 0.13 | 1.37 | 1.51 |
| LTF5022T- 150M1R1-D | 15 +/-20% | 1 | 0.24 | 0.20 | 1.15 | 1.22 |
| LTF5022T- 220MR95-D | 22 +/-20% | 1 | 0.34 | 0.28 | 0.95 | 1.02 |
| LTF5022T- 330MR77-D | 33 +/-20% | 1 | 0.49 | 0.41 | 0.77 | 0.85 |
| LTF5022T- 470MR66-D | 47 +/-20% | 1 | 0.70 | 0.58 | 0.66 | 0.71 |
| LTF5022T- 680MR54-D | 68 +/-20% | 1 | 1.03 | 0.86 | 0.54 | 0.59 |
| LTF5022T- 101MR45-D | 100 +/-20% | 1 | 1.28 | 1.07 | 0.45 | 0.53 |

Note) Idc 1 : Depend on the Inductance Saturation. (-30% Reduction from Nominal L Value)

Idc 2 : Depend on the Self Temperature Rise (40 deg.C Typ.)

Operating Temperature Range : -40deg. C ~ +150deg.C (including Self Temp. Rise)

