



**i** You have been redirected from search results. Not what you are looking for? See results for 'CY7C1051H30-10ZSXIT (/cms/en/search.html#!term=CY7C1051H30-10ZSXIT&view=all)'

## Strengthening the link between the real and the digital world (/cms/en/about-infineon/company/cypress-acquisition/)

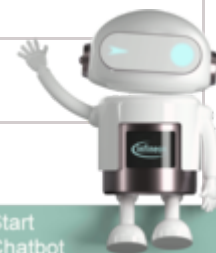
[Home \(/cms/en/\)](#) > 
 [Products \(/cms/en/product/\)](#) > 
 [Memories \(/cms/en/product/memories/\)](#)  
[SRAM \(Static RAM\) \(/cms/en/product/memories/sram-static-ram/\)](#)  
[Asynchronous SRAM \(/cms/en/product/memories/sram-static-ram/asynchronous-sram/\)](#) > 
 [CY7C1051H30-10ZSXIT](#)

Follow

### Overview

### Parametrics

Parametrics	CY7C1051H30-10ZSXIT
Alarms	N
Density	8192 kBit
Interfaces	Parallel
Lead Ball Finish	Ni/Pd/Au
Operating Temperature min max	-40 °C 85 °C
Operating Voltage min max	2.2 V 3.6 V
Operating Voltage (VCCQ) min max	2.2 V 3.6 V
Organization (X x Y)	512K x 16
Peak Reflow Temp	260 °C
Qualification	Industrial
Real Time Clock	N



Start Chatbot



Speed Parameters	10 ns CY7C1051H30-10ZSXIT
Watchdog Timer	N

## Documents

> Login (/sec/login?)

ret=https%3A%2F%2Fwww.infineon.com%2Fcms%2Fen%2Fproduct%2Fmemories%2Fsram-static-ram%2Fasynchronous-sram%2Fcy7c1051h30-10zsexit%2F%23!documents)


to myInfineon to see all documents available

## — Data Sheets





CY7C1051H30-10ZSXI, CY7C1051H30-10ZSXIT  (/dgd/Infineon-CY7C1051H30\_10ZSXI-DataSheet-v01\_00-EN.pdf?fileId=8ac78c8c7e7124d1017e770196bd29e5)

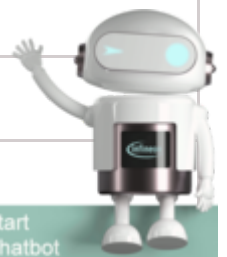
> EN (/dgd/Infineon-CY7C1051H30\_10ZSXI-DataSheet-v01\_00-EN.pdf?fileId=8ac78c8c7e7124d1017e770196bd29e5)

 Share

01\_00 | 2022-01-20 | pdf | 558 KB

## Order

Sales Product Name	CY7C1051H30-10ZSXIT
OPN  Info	CY7C1051H30-10ZSXIT
Product Status	active and preferred
Infineon Package name	PG-TSOP-44 (/cms/en/product/packages/PG-TSOP/PG-TSOP-44-800/)
Standard Package name	
Order online	<a href="#">Buy online</a>
Completely lead free	undefined
Halogen free	undefined
RoHS compliant 	yes
Packing Size	1000



<b>Sales Product Name</b>	CX7C1051H30-10ZSXIT
<b>Packing type</b>	TAPE & REEL
<b>Moisture Level</b>	3
<b>Moisture Packing</b>	DRY

## Support



Top 6 FAQs. Use the search bar above to show more!

Technical Support

The best way to reach out to our Applications Engineers is through our Developer Community <https://community.infineon.com> (<https://community.infineon.com>)

Our Applications Engineers moderate the community to ensure all questions are answered quickly and accurately, either by others in the community or by our own engineers.

...

---

+ Read more

Partner Finder for support, software, hardware, dev tools, services

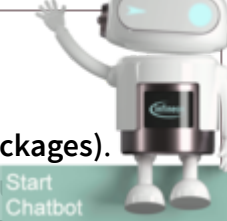

Infineon's partners offer products and services that complement our semiconductor device solutions to accelerate your development efforts and time to market. You can find them here: <https://www.infineon.com/partnerfinder> (<https://www.infineon.com/partnerfinder>).

---

+ Read more

Package information

The package information is available on **our homepage** (<https://www.infineon.com/packages>). Please note, that they are divided into the subcategories "Leaded and through-hole", "SMD Devices" and "Special Packages". You will find all relevant package information at the link that applies.

---

[+ Read more](#)

### Notes on processing

Information regarding reflow profile, soldering temperature, soldering profile and further processing notes for most of the discrete products are mentioned in the Application Note.

Please visit <https://www.infineon.com/packages> (<https://www.infineon.com/packages>) and refer to the document **General Recommendations for Assembly of Infineon Packages** (<https://www.infineon.com/dgdl/Infineon-...>)

---

[+ Read more](#)

### Design-in support

We offer design-in support for your application.

You can use our Infineon Solution Finder: <https://www.infineon.com/solutionFinder> (<https://www.infineon.com/solutionFinder>)

Here you select the relevant parameters of your application and narrow down your choice according to your requirements.

---

[+ Read more](#)

### Simulation Parameters/SPICE models

Please visit our Simulation Model Finder on the internet at

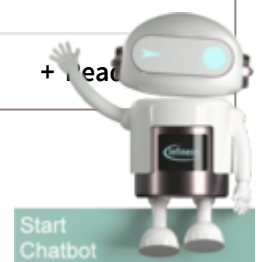
<https://www.infineon.com/simulation> (<https://www.infineon.com/simulation>)

Please select "Simulation Models (SPICE, S-parameters, SABER)"

If you cannot find your requested model there, please submit your request via the "click to request..."

---

[+ Read more](#)



苏ICP备15016286号-1 (<http://www.beian.miit.gov.cn>)|

苏公网安备 32021402001016号 (<http://www.beian.gov.cn/portal/registerSystemInfo?recordcode=32021402001016>)|

营业执照 (/cms/cn/ifwu)

