

A. ELECTRICAL SPECIFICATIONS @25 °C

Inductance: 42uH Min @ 100KHz, 0.1V(1-3/4-6)

Leakage Inductance: 0.1uH Max @ 100KHz, 0.1V(1-3/4-6)

Cw/w: 8PF MAX @ 100KHz, 0.1V

DC Resistance: 0.05 Ω Max (1-3/4-6) 1.0Ω Max (12-10/9-7)

Turn Ratio: 1CT:3(T1/T2)±2%

Isolation Hi-Pot: 500VAC 1mA 1Sec (Pri To Sec)

200VAC 1mA 1Sec (T1 To T2)

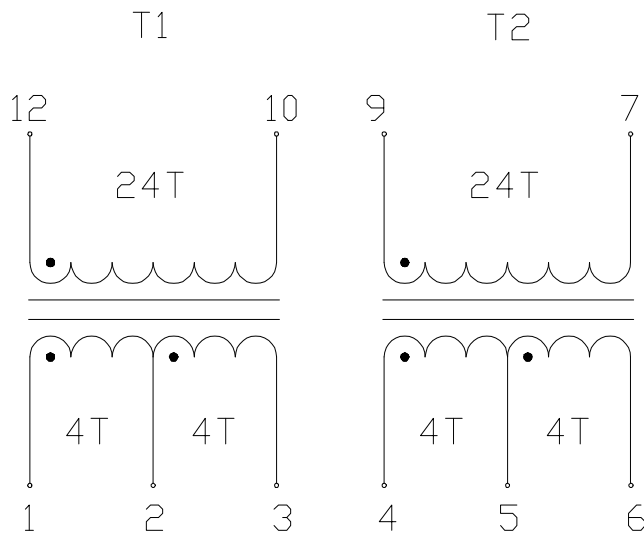
OPERATING TEMPERATURE: 0 °C TO 70 °C.

Internal Joint : Sn05Pb95Solder

(It is exempted under the RoHS Directive--Annex,Item 7)

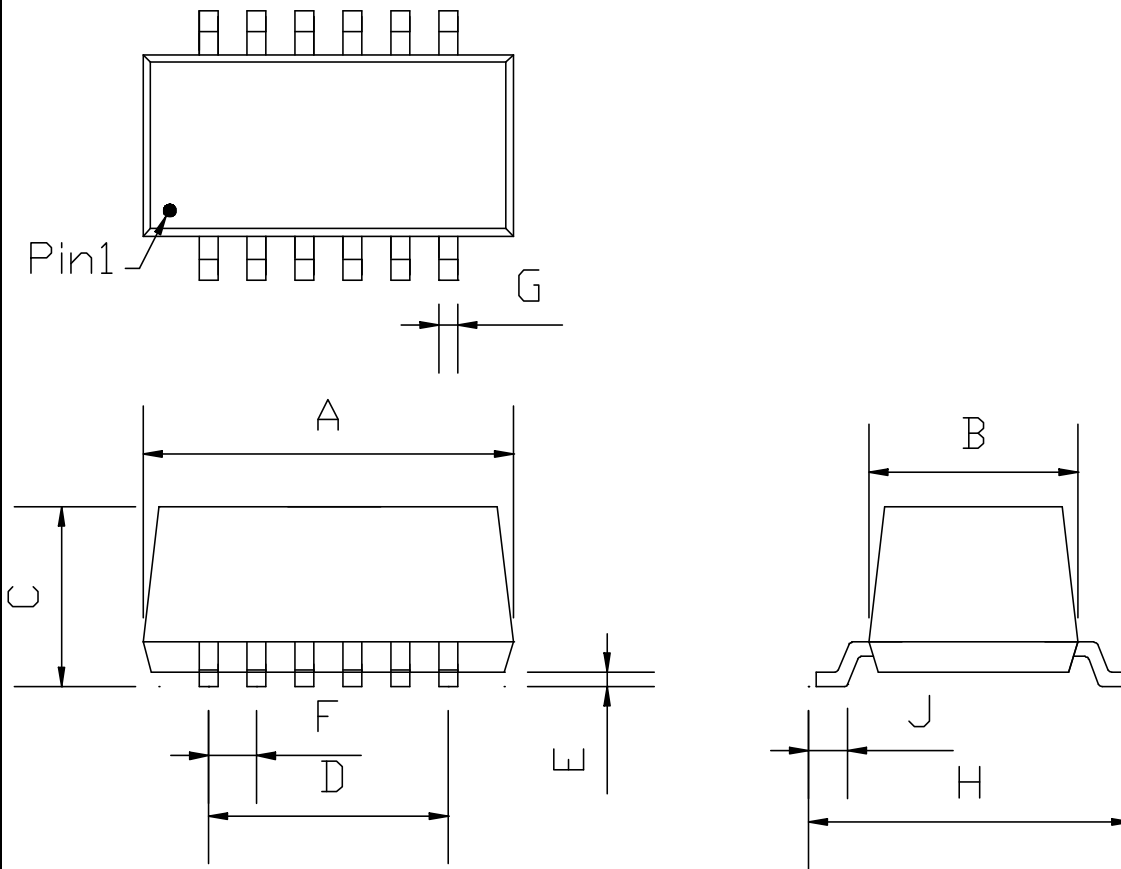
Outer Lead: Sn96.5 Ag3.0Cu 0.5Solder

B. SCHEMATIC:



DRAWN BY Liping Wang	CHECKED BY Taming Hsu	APPROVED BY Jeffrey Lu	CUSTOMER:	DATE	2008/11/20
Bourns Inductive Components			PART NO: PT78158L-6	PAGE	1 OF 4

C. DIMENSIONS & MARKING:



DIM	MILLIMETERS		INCHES	
	MIN	MAX	MIN	MAX
A	9.80(Max)		0.386(Max)	
B	4.75	5.25	0.187	0.206
C	7.0(Max)		0.267(max)	
D	6.35(typical)		0.250(typical)	
E	0.10(typical)		0.004(typical)	
F	1.27(typical)		0.050(typical)	
G	0.46(typical)		0.018(typical)	
H	6.85	7.35	0.269	0.289
I	0°	8°	0°	8°

1. PACKAGE:BLACK PLASTIC SELF-EX CUSTOMER:
 2. LEAD:SOLDERABILITY PER MIL-STD-202,METHOD 208.
- NOTES:UNLESS OTHER WISE SPECIFIED.

DRAWN BY Liping Wang	CHECKED BY Taming Hsu	APPROVED BY Jeffrey Lu	CUSTOMER:	DATE	2008/11/20
Bourns Inductive Components			PART NO:PT78158L-6	PAGE	2 OF 4

D. RELIABILITY TEST CRITERIA:

- 1. Temperature rise: 45°C max.
- 2. Operating temperature range (Including self-temperature rise): 0°C to 70°C
- 3. Terminal strength: Pull test withstand 10N 60+/-0.5S no looseness or movement.
- 4. Solder ability: Dipped in 235°C +/-5°C molten solder for 3+/-0.5 seconds 95% min shall be smooth any and bright
- 5. Resistance to soldering heat : Dipped in 260°C +/-5°C molten solder for 5+/-0.5S, shall not be abnormality.
- 6. Vibration: 1.5mm amplitude total excursion 10-55-10 Hz traversed in 1 minute, x.y.z, axis for 2 hours. Shall not be any abnormality.
- 7. Random drop (Packing condition): Height 60cm, 3 times on the wood floorboard ,shall not be any abnormality.
- 8. Dry heat: 120+/-2°C 96 hours.
- 9. Cold: -25+/-2°C 96 hours.
- 10. Damp Heat: 40+/-2°C, 95+/-3% RH 96 hours.
- 11. Change of temperature: exposed 5 cycle; each consisting of 30 minutes at -25+/-2°C, 2-3 minutes at 20+/-2°C, 30 minutes at 85+/-2°C, 2-3 minutes at 20+/-2°C.

Remarks: After reliability test per item 8,9,10,11, in prior to the test as specified, the transformer/coil would be exposed to the room temperature for 1-2 hours, the component meets all requirements according to this specification.

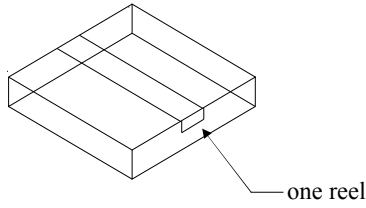
E. MATERIAL LIST:

Item	Part Name	Materials	Supplier	UL NO.	
01	Lead frame	Phosphor Bronze	XIANG HE	N/A	
02	Core (2.54*1.27*1.27)	Soft Ferrite	ALWIN ELECTRONICS CO.,LTD.	N/A	
03	Wire Φ0.18 and Φ0.08	Magnet Wire OUEWHA Rating 200°C	PROSPERITY WIRE AND CABLE CO.,LTD.	E196072	
04	Epoxy	EME-1200	CHANG CHUN PLASTICS CO.,LTD.	E59481	
05	Silicone Rubber	KE1204A/B	SHIN-ETSU SILICONE TAIWAN CO.,LTD.	E48923	
06	Solder	Internal Joint:Sn05Pb95 Outer Luter:Sn96.5Ag3.0Cu0.5	HIGH QUALITY TECHNIIIGY CO.,LTD	N/A	
7	VARNISH	BC-346A	DOW CHEMICAL	N/A	
DRAWN BY Liping Wang		CHECKED BY Taming Hsu	APPROVED BY Jeffrey Lu	CUSTOMER:	DATE 2008/11/20
Bourns Inductive Components			PART NO: PT78158L-6	PAGE	3 OF 4

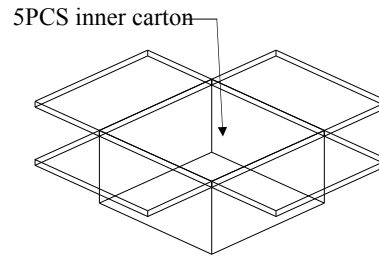
CUSTOMER:

G. PACKAGE CRITERION:

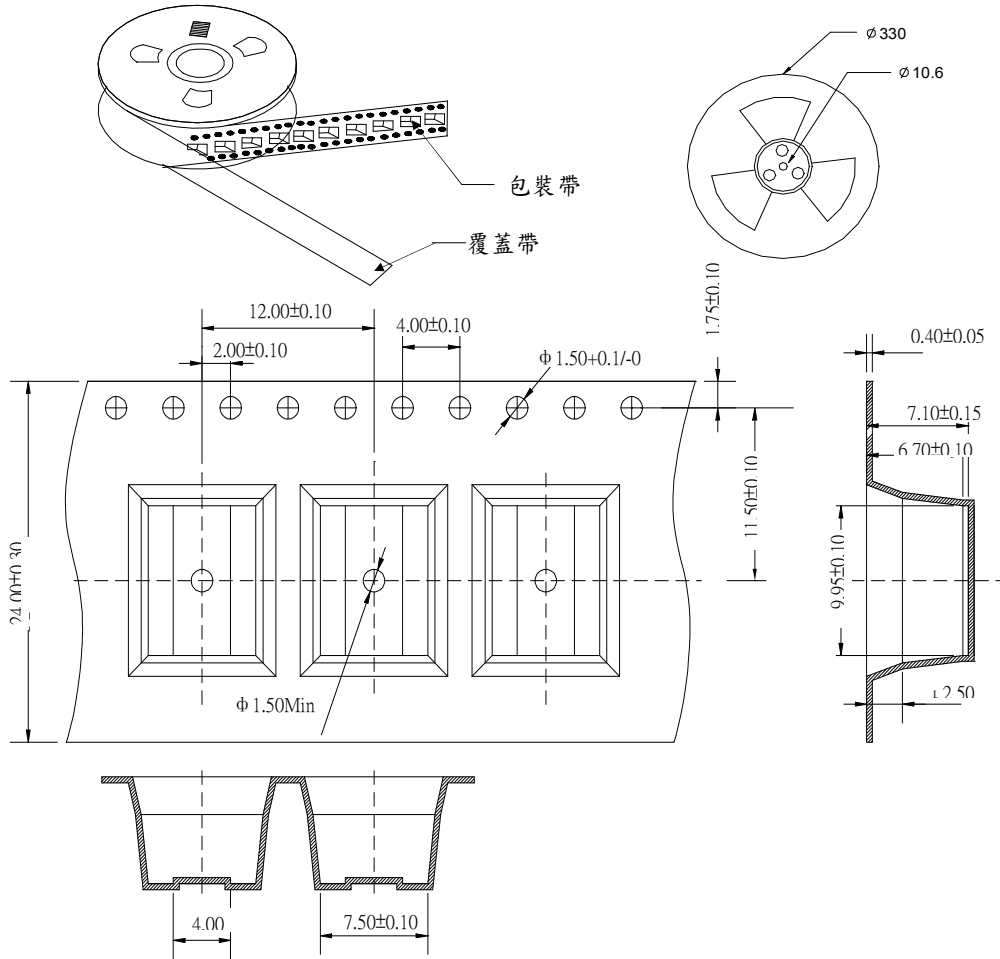
1. Inner Carton: 350*350*70



2. Export Carton: 410*405*405



3. Reel:



4. Package Quantity:

units: m/m

One Reel=800Pcs

One Inner carton =800Pcs

One Export carton =4000Pcs

5. MSL LEVEL: 3

CUSTOMER:

DRAWN BY Lipping Wang	CHECKED BY Taming Hsu	APPROVED BY Jeffrey Lu	CUSTOMER:	DATE	2008/11/20
Bourns Inductive Components			PART NO: PT78158L-6	PAGE	4 OF 4