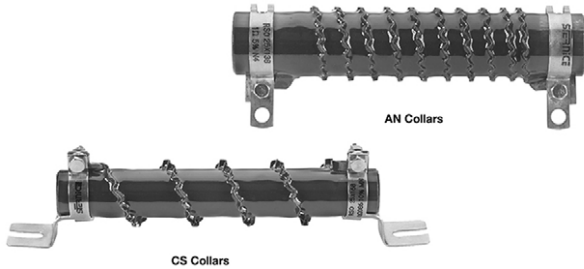


Wirewound Resistor, Industrial High Power, Enamelled Corrugated Tape, Tubular

FEATURES

- 160 W to 1 kW at 25 °C
- Material categorization: for definitions of compliance please see www.vishay.com/doc?99912

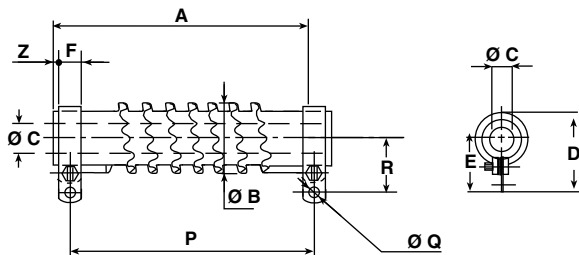
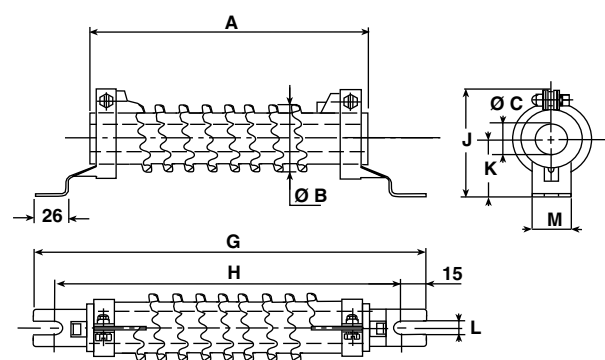
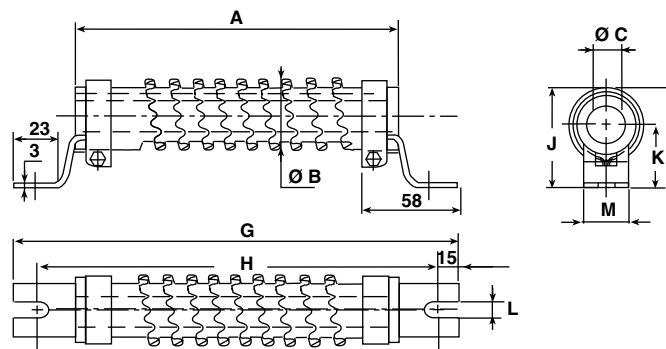

RoHS
COMPLIANT


The remarkable dissipation power of this series is the result of an original winding method using corrugated edge-wound tape, thus forming a very active radiator. The enameling follows the contour of the resistive element and provides effective insulation and support for the winding.

The tubular core is of special ceramic, capable of withstanding high thermal shock and overload of short duration.

NF F 16101, 10/1988 and 16102, 04/1992: Not applicable (our parts are made of metallic and refractory materials).

DIMENSIONS in millimeters

SCREWED STAINLESS STEEL 304 I "AN" TYPE 1

SCREWED STAINLESS STEEL 304 I "CS" TYPE 1

SCREWED STAINLESS STEEL 304 I "CS" TYPE 2




| DIMENSIONS in millimeters | | | | | | | | | | | |
|---------------------------|-------------|-----------|----------|----------|----------|-----------|----------|---------------|-------------|--------------------------|----------|
| RSO SERIES | CONNECTIONS | | A ± 2 | Ø B MAX. | Ø C MIN. | D MAX. | E | F + 0.5 / + 0 | G - 4 / + 0 | H - 4 / + 0 | J |
| | | | | | | | | | | | |
| 25 x 168 | AN type 1 | CS type 1 | 168 | 39 | 12.6 | 54 | 33.5 ± 1 | 9 | 229 | 199 | 50 ± 1.5 |
| 30 x 250 | AN type 1 | CS type 1 | 250 | 44 | 17.4 | 62 | 36 ± 1 | 13 | 317 | 287 | 60 ± 1.5 |
| 40 x 370 | AN type 2 | CS type 2 | 370 | 54.5 | 22.3 | 85.5 | 57 ± 1.5 | 18 | 432 | 405 | 73.8 |
| 50 x 373 | AN type 2 | CS type 2 | 373 | 65 | 27.1 | 97 | 63 ± 1.5 | 18 | 432 | 405 | 79 |
| RSO SERIES | CONNECTIONS | | K | L + 0.5 | M ± 0.5 | P | Q | R | Z | AVERAGE UNIT WEIGHT IN g | |
| | | | | | | | | | | AN | CS |
| 25 x 138 | AN type 1 | CS type 1 | 27 ± 1 | 6.5 | 24 | 117 ± 2 | 5.7 | 28.5 ± 1 | 6 | 160 | 205 |
| 25 x 168 | AN type 1 | CS type 1 | 27 ± 1 | 6.5 | 24 | 147 ± 2 | 5.7 | 28.5 ± 1 | 6 | 190 | 235 |
| 30 x 250 | AN type 1 | CS type 1 | 30 ± 1 | 9 | 25 | 227 ± 2.5 | 5.7 | 31 ± 1 | 5 | 350 | 400 |
| 40 x 370 | AN type 2 | CS type 2 | 45 ± 1.5 | 9 | 30 | 332 ± 3 | 9.2 | 45 ± 1.5 | 10 | 960 | 1040 |
| 50 x 373 | AN type 2 | CS type 2 | 45 ± 1.5 | 9 | 30 | 332 ± 3 | 9.2 | 51 ± 1.5 | 11.5 | 1375 | 1455 |

| STANDARD ELECTRICAL SPECIFICATIONS | | | | |
|------------------------------------|-------|--------------------|--|---------------|
| MODEL | SIZE | RESISTANCE RANGE Ω | RATED POWER $P_{25^{\circ}\text{C}}$ W | TOLERANCE ± % |
| RSO 25 x 138 | 25138 | 0.068 to 12 | 160 | 10 |
| RSO 25 x 168 | 25168 | 0.10 to 18 | 200 | 10 |
| RSO 30 x 250 | 30250 | 0.22 to 33 | 350 | 10 |
| RSO 40 x 370 | 40370 | 0.33 to 56 | 700 | 10 |
| RSO 50 x 373 | 50373 | 0.39 to 68 | 1000 | 10 |

| MECHANICAL SPECIFICATIONS | |
|---------------------------|--------------------------|
| Mechanical Protection | Enamel |
| Resistive Element | Ni-Cr wire |
| Connections | AN CS supporting collars |
| Average Unit Weight | 160 g to 1455 g |

| TECHNICAL SPECIFICATIONS | |
|-------------------------------|--|
| Resistance Range | 0.068 Ω to 68 Ω (E12 preferred series) |
| Standard Resistance Tolerance | $R_n \geq 1 \Omega \pm 5 \%$ $R_n < 1 \Omega \pm 10 \%$ |
| Power Rating | 160 W to 1 kW at 25 °C |

| ENVIRONMENTAL SPECIFICATIONS | |
|------------------------------|----------------------------|
| Temperature Range | -55 °C, +450 °C |
| Climatic Category | -55 °C / +200 °C / 56 days |

| PERFORMANCE | | | |
|---------------------|--|---------------|---------------------------|
| TESTS | CONDITIONS | REQUIREMENTS | TYPICAL VALUES AND DRIFTS |
| Short Time Overload | 10 P_r during 5 s | 2 % or 0.05 Ω | 1 % |
| Thermal Shock | Load at P_r followed by cold temp. exposure at -55 °C / 15 s | 2 % or 0.05 Ω | 1 % |
| Climatic Sequence | Phase A: +200° Phase C: -55° Phase D: 5 cycles | 3 % or 0.05 Ω | 1 % |
| Load Life | 90' / 30' cycle 1000 h at P_r 25 °C | 5 % | 2 % |

RECOMMENDATIONS FOR USE

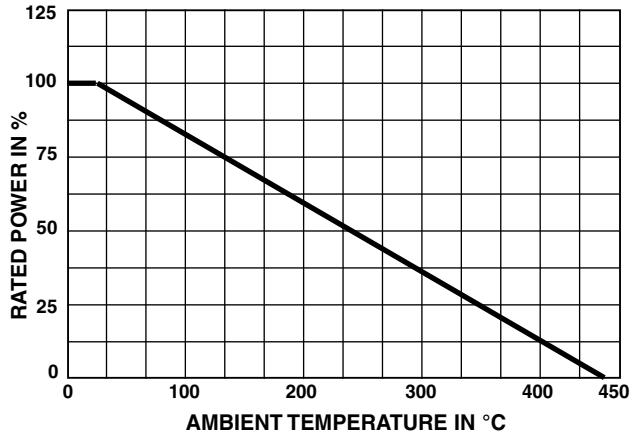
OVERLOAD:

The RSO resistors are capable of withstanding overloads of about 10 P_r for a maximum period of 5 s; they can resist momentarily even greater overloads.

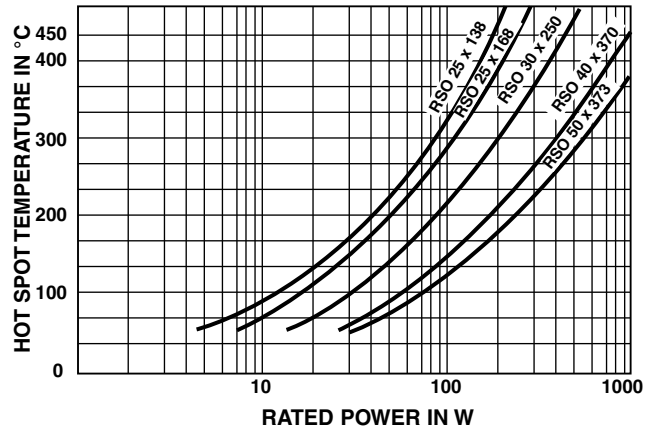
Particular requirements should be submitted to Vishay Sfernice.



POWER RATING



TEMPERATURE RISE



MARKING

Vishay Sfernice trademark, model, style, nominal resistance (in Ω), tolerance (in %), manufacturing date.

PACKAGING

Box: Fixed quantity depending on size and collars

ORDERING INFORMATION

| RSO | 25 x 168 | XXX | CS | U82 | ± 10 % | B02NA | e |
|-------|----------|-----------------------|-------------|---|-----------|-----------|----------------|
| MODEL | STYLE | SPECIAL DESIGN | CONNECTIONS | OHMIC VALUE | TOLERANCE | PACKAGING | LEAD (Pb)-FREE |
| | | Method N° Optional | | Custom items are subject to extra-charge and min. order. Please see price list. | | | |

SAP PART NUMBERING GUIDELINES

| RSO | 25168 | C | R820 | K | N |
|-------|-------|-------------|-------------|-----------|-----------|
| MODEL | STYLE | CONNECTIONS | OHMIC VALUE | TOLERANCE | PACKAGING |

RELATED DOCUMENTS

APPLICATION NOTES

| | |
|-----------------------|--|
| Packaging Information | www.vishay.com/doc?50033 |
| Accessories | www.vishay.com/doc?50021 |



Disclaimer

ALL PRODUCT, PRODUCT SPECIFICATIONS AND DATA ARE SUBJECT TO CHANGE WITHOUT NOTICE TO IMPROVE RELIABILITY, FUNCTION OR DESIGN OR OTHERWISE.

Vishay Intertechnology, Inc., its affiliates, agents, and employees, and all persons acting on its or their behalf (collectively, "Vishay"), disclaim any and all liability for any errors, inaccuracies or incompleteness contained in any datasheet or in any other disclosure relating to any product.

Vishay makes no warranty, representation or guarantee regarding the suitability of the products for any particular purpose or the continuing production of any product. To the maximum extent permitted by applicable law, Vishay disclaims (i) any and all liability arising out of the application or use of any product, (ii) any and all liability, including without limitation special, consequential or incidental damages, and (iii) any and all implied warranties, including warranties of fitness for particular purpose, non-infringement and merchantability.

Statements regarding the suitability of products for certain types of applications are based on Vishay's knowledge of typical requirements that are often placed on Vishay products in generic applications. Such statements are not binding statements about the suitability of products for a particular application. It is the customer's responsibility to validate that a particular product with the properties described in the product specification is suitable for use in a particular application. Parameters provided in datasheets and / or specifications may vary in different applications and performance may vary over time. All operating parameters, including typical parameters, must be validated for each customer application by the customer's technical experts. Product specifications do not expand or otherwise modify Vishay's terms and conditions of purchase, including but not limited to the warranty expressed therein.

Hyperlinks included in this datasheet may direct users to third-party websites. These links are provided as a convenience and for informational purposes only. Inclusion of these hyperlinks does not constitute an endorsement or an approval by Vishay of any of the products, services or opinions of the corporation, organization or individual associated with the third-party website. Vishay disclaims any and all liability and bears no responsibility for the accuracy, legality or content of the third-party website or for that of subsequent links.

Except as expressly indicated in writing, Vishay products are not designed for use in medical, life-saving, or life-sustaining applications or for any other application in which the failure of the Vishay product could result in personal injury or death. Customers using or selling Vishay products not expressly indicated for use in such applications do so at their own risk. Please contact authorized Vishay personnel to obtain written terms and conditions regarding products designed for such applications.

No license, express or implied, by estoppel or otherwise, to any intellectual property rights is granted by this document or by any conduct of Vishay. Product names and markings noted herein may be trademarks of their respective owners.