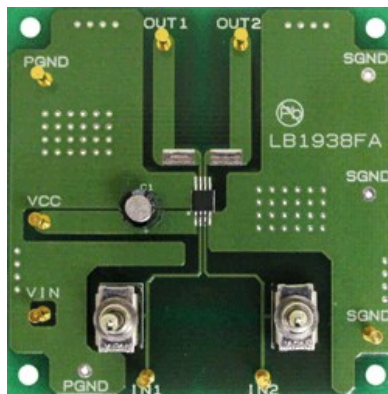




LB1938FAGEVB: H-Bridge Motor Driver Evaluation Board

The LB1938FA is an H-bridge motor driver that supports low-voltage drive and features low-saturation outputs in an ultra-miniature slim package. The LB1938FA provides forward, reverse, brake, and standby modes controlled by two input signals, and is an optimal DC motor driver for notebook personal computers, digital cameras, cell phones, and other portable equipment.



Evaluation/Development Tool Information

Product	Status	Compliance	Short Description	Parts Used	Action
LB1938FAGEVB	Active	Pb-free	H-Bridge Motor Driver Evaluation Board	LB1938FA-AH , LB1938FA-BH	» Contact Local Sales Office

Technical Documents

Type	Document Title	Document ID/Size	Rev
Eval Board: BOM	LB1938FAGEVB Bill of Materials ROHS Compliant	LB1938FAGEVB_BOM_ROHS.PDF - 14 KB	0
Eval Board: Gerber	LB1938FAGEVB Gerber Layout Files (Zip Format)	LB1938FAGEVB_GERBER.ZIP - 80.0 KB	0
Eval Board: Schematic	LB1938FAGEVB Schematic	LB1938FAGEVB_SCHEMATIC.PDF - 29.0 KB	0
Eval Board: Test Procedure	LB1938FAGEVB Test Procedure	LB1938FAGEVB_TEST_PROCEDURE.PDF - 122 KB	1

Previously Viewed Products

Select Product...

[Clear List](#)

Design Support

- [Technical Documentation](#)
- [Design Resources & Documents](#)
- [Technical Support](#)
- [Sales Support](#)

