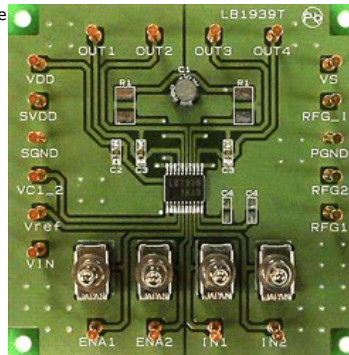




LB1939TGEVB: EVABOARD FOR LB1939T

The LB1939T is a constant voltage driver for single stepping motor. It is optimal for motor drive in portable system products. (Battery drive available)



Features and Applications

Features

- Low voltage drive
- Dual power supply operation Vs=1.6V to 7.5V VDD=1.9V to 6.5V
- Single power supply operation Vs=VDD=1.9V to 7.5V
- Low saturation voltage Vosat=0.3V at Io=200mA
- Supports constant voltage and constant current drive
- Built-in reference voltage circuit
- Small and thin package TSSOP20
- Current consumption 0 uA by standby mode

Evaluation/Development Tool Information

Product	Status	Compliance	Short Description	Parts Used	Action
LB1939TGEVB	Active	Pb-free	EVABOARD FOR LB1939T	LB1939T-MPB-E , LB1939T-TLM-E	» Contact Local Sales Office » Inventory

Technical Documents

Type	Document Title	Document ID/Size	Rev
Eval Board: BOM	LB1939TGEVB Bill of Materials ROHS Compliant	LB1939TGEVB_BOM_ROHS.PDF - 71.0 KB	0
Eval Board: Gerber	LB1939TGEVB Gerber Layout Files (Zip Format)	LB1939TGEVB_GERBER.REV0.ZIP - 35.0 KB	0
Eval Board: Schematic	LB1939TGEVB Schematic	LB1939TGEVB_SCHEMATIC.PDF - 41.0 KB	0
Eval Board: Test Procedure	LB1939TGEVB Test Procedure	LB1939TGEVB_TEST_PROCEDURE.PDF - 173 KB	1

Previously Viewed Products

Select Product... [Clear List](#)

Design Support

- » [Technical Documentation](#)
- » [Design Resources & Documents](#)
- » [Technical Support](#)
- » [Sales Support](#)

