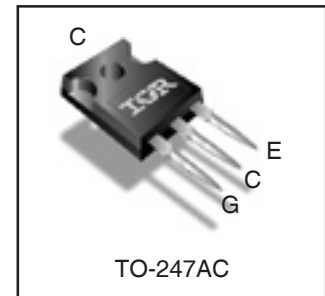
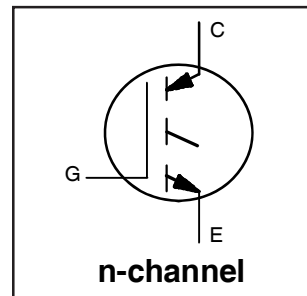


## PDP TRENCH IGBT

### Features

- Advanced Trench IGBT Technology
- Optimized for Sustain and Energy Recovery Circuits in PDP Applications
- Low  $V_{CE(on)}$  and Energy per Pulse ( $E_{PULSE}^{TM}$ ) for Improved Panel Efficiency
- High Repetitive Peak Current Capability
- Lead Free Package

| Key Parameters                             |      |            |
|--|------|------------|
| $V_{CE\ min}$                              | 300  | V          |
| $V_{CE(on)\ typ. @ I_C = 70A}$             | 1.90 | V          |
| $I_{RP\ max @ T_C = 25^\circ C \text{ ①}}$ | 250  | A          |
| $T_J\ max$                                 | 150  | $^\circ C$ |



| G    | C         | E       |
|------|-----------|---------|
| Gate | Collector | Emitter |

### Description

This IGBT is specifically designed for applications in Plasma Display Panels. This device utilizes advanced trench IGBT technology to achieve low  $V_{CE(on)}$  and low  $E_{PULSE}^{TM}$  rating per silicon area which improve panel efficiency. Additional features are 150 $^\circ C$  operating junction temperature and high repetitive peak current capability. These features combine to make this IGBT a highly efficient, robust and reliable device for PDP applications.

### Absolute Maximum Ratings

|                             | Parameter                                    | Max.             | Units         |
|-----------------------------|--|------------------|---------------|
| $V_{GE}$                    | Gate-to-Emitter Voltage                      | $\pm 30$         | V             |
| $I_C @ T_C = 25^\circ C$    | Continuous Collector Current, $V_{GE} @ 15V$ | 70               | A             |
| $I_C @ T_C = 100^\circ C$   | Continuous Collector, $V_{GE} @ 15V$         | 40               |               |
| $I_{RP} @ T_C = 25^\circ C$ | Repetitive Peak Current ①                    | 250              |               |
| $P_D @ T_C = 25^\circ C$    | Power Dissipation                            | 160              | W             |
| $P_D @ T_C = 100^\circ C$   | Power Dissipation                            | 63               |               |
|                             | Linear Derating Factor                       | 1.3              | W/ $^\circ C$ |
| $T_J$                       | Operating Junction and                       | -40 to + 150     | $^\circ C$    |
| $T_{STG}$                   | Storage Temperature Range                    |                  |               |
|                             | Soldering Temperature for 10 seconds         |                  |               |
|                             | Mounting Torque, 6-32 or M3 Screw            | 10lb·in (1.1N·m) | N             |

### Thermal Resistance

|                        | Parameter   | Typ.       | Max. | Units        |
|------------------------|---|------------|------|--------------|
| $R_{\theta JC}$ (IGBT) | Thermal Resistance Junction-to-Case-(each IGBT) ② | —          | 0.8  | $^\circ C/W$ |
| $R_{\theta CS}$        | Case-to-Sink (flat, greased surface)              | 0.24       | —    |              |
| $R_{\theta JA}$        | Junction-to-Ambient (typical socket mount) ②      | —          | 40   |              |
|                        | Weight  | 6.0 (0.21) | —    | g (oz)       |

## Electrical Characteristics @ $T_J = 25^\circ\text{C}$ (unless otherwise specified)

|                                | Parameter                              | Min. | Typ. | Max. | Units                | Conditions  |
|--------------------------------|--|------|------|------|----------------------|---|
| $BV_{CES}$                     | Collector-to-Emitter Breakdown Voltage | 300  | —    | —    | V                    | $V_{GE} = 0V, I_{CE} = 1\text{ mA}$   |
| $\Delta BV_{CES}/\Delta T_J$   | Breakdown Voltage Temp. Coefficient    | —    | 0.29 | —    | V/ $^\circ\text{C}$  | Reference to $25^\circ\text{C}, I_{CE} = 1\text{ mA}$   |
| $V_{CE(on)}$                   | Static Collector-to-Emitter Voltage    | —    | 1.29 | 1.46 | V                    | $V_{GE} = 15V, I_{CE} = 25A$ ③  |
|                                |  | —    | 1.49 | 1.67 |                      | $V_{GE} = 15V, I_{CE} = 40A$ ③  |
|                                |  | —    | 1.90 | 2.10 |                      | $V_{GE} = 15V, I_{CE} = 70A$ ③  |
|                                |  | —    | 2.57 | 2.96 |                      | $V_{GE} = 15V, I_{CE} = 120A$ ③   |
|                                |  | —    | 2.27 | —    |                      | $V_{GE} = 15V, I_{CE} = 70A, T_J = 150^\circ\text{C}$   |
| $V_{GE(th)}$                   | Gate Threshold Voltage                 | 2.6  | —    | 5.0  | V                    | $V_{CE} = V_{GE}, I_{CE} = 500\mu\text{A}$  |
| $\Delta V_{GE(th)}/\Delta T_J$ | Gate Threshold Voltage Coefficient     | —    | -11  | —    | mV/ $^\circ\text{C}$ |   |
| $I_{CES}$                      | Collector-to-Emitter Leakage Current   | —    | 2.0  | 25   | $\mu\text{A}$        | $V_{CE} = 300V, V_{GE} = 0V$  |
|                                |  | —    | 5.0  | —    |                      | $V_{CE} = 300V, V_{GE} = 0V, T_J = 100^\circ\text{C}$   |
|                                |  | —    | 100  | —    |                      | $V_{CE} = 300V, V_{GE} = 0V, T_J = 150^\circ\text{C}$   |
| $I_{GES}$                      | Gate-to-Emitter Forward Leakage        | —    | —    | 100  | nA                   | $V_{GE} = 30V$  |
|                                | Gate-to-Emitter Reverse Leakage        | —    | —    | -100 |                      | $V_{GE} = -30V$   |
| $g_{fe}$                       | Forward Transconductance               | —    | 29   | —    | S                    | $V_{CE} = 25V, I_{CE} = 25A$  |
| $Q_g$                          | Total Gate Charge                      | —    | 65   | —    | nC                   | $V_{CE} = 200V, I_C = 25A, V_{GE} = 15V$ ③  |
| $Q_{gc}$                       | Gate-to-Collector Charge               | —    | 22   | —    |                      |   |
| $t_{d(on)}$                    | Turn-On delay time                     | —    | 36   | —    | ns                   | $I_C = 25A, V_{CC} = 196V$<br>$R_G = 10\Omega, L = 200\mu\text{H}, L_S = 200\text{nH}$<br>$T_J = 25^\circ\text{C}$  |
| $t_r$                          | Rise time                              | —    | 31   | —    |                      |   |
| $t_{d(off)}$                   | Turn-Off delay time                    | —    | 112  | —    |                      |   |
| $t_f$                          | Fall time                              | —    | 65   | —    |                      |   |
| $t_{d(on)}$                    | Turn-On delay time                     | —    | 30   | —    | ns                   | $I_C = 25A, V_{CC} = 196V$<br>$R_G = 10\Omega, L = 200\mu\text{H}, L_S = 200\text{nH}$<br>$T_J = 150^\circ\text{C}$ |
| $t_r$                          | Rise time                              | —    | 33   | —    |                      |   |
| $t_{d(off)}$                   | Turn-Off delay time                    | —    | 145  | —    |                      |   |
| $t_f$                          | Fall time                              | —    | 98   | —    |                      |   |
| $t_{st}$                       | Shoot Through Blocking Time            | 100  | —    | —    | ns                   | $V_{CC} = 240V, V_{GE} = 15V, R_G = 5.1\Omega$  |
| $E_{PULSE}$                    | Energy per Pulse                       | —    | 1075 | —    | $\mu\text{J}$        | $L = 220\text{nH}, C = 0.40\mu\text{F}, V_{GE} = 15V$<br>$V_{CC} = 240V, R_G = 5.1\Omega, T_J = 25^\circ\text{C}$   |
|                                |  | —    | 1432 | —    |                      | $L = 220\text{nH}, C = 0.40\mu\text{F}, V_{GE} = 15V$<br>$V_{CC} = 240V, R_G = 5.1\Omega, T_J = 100^\circ\text{C}$  |
| $C_{iss}$                      | Input Capacitance                      | —    | 2250 | —    | pF                   | $V_{GE} = 0V$   |
| $C_{oss}$                      | Output Capacitance                     | —    | 110  | —    |                      | $V_{CE} = 30V$  |
| $C_{rss}$                      | Reverse Transfer Capacitance           | —    | 58   | —    |                      | $f = 1.0\text{MHz}$ , See Fig.13  |
| $L_C$                          | Internal Collector Inductance          | —    | 5.0  | —    | nH                   | Between lead,<br>6mm (0.25in.)  |
| $L_E$                          | Internal Emitter Inductance            | —    | 13   | —    |                      | from package<br>and center of die contact   |

### Notes:

- ① Half sine wave with duty cycle = 0.1,  $t_{on} = 2\mu\text{sec}$ .
- ②  $R_G$  is measured at  $T_J$  of approximately  $90^\circ\text{C}$ .

③ Pulse width  $\leq 400\mu\text{s}$ ; duty cycle  $\leq 2\%$ .

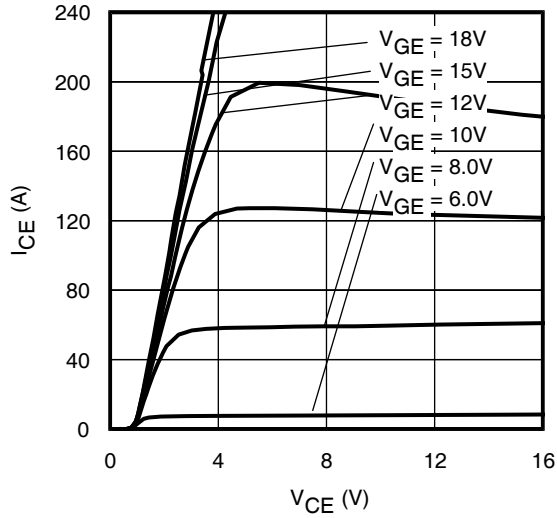


Fig 1. Typical Output Characteristics @ 25°C

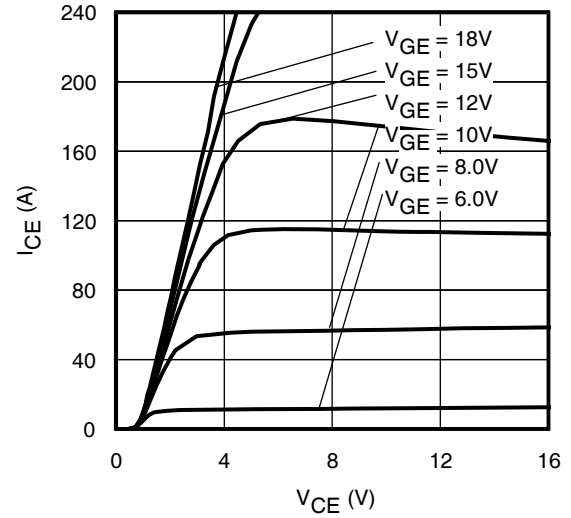


Fig 2. Typical Output Characteristics @ 75°C

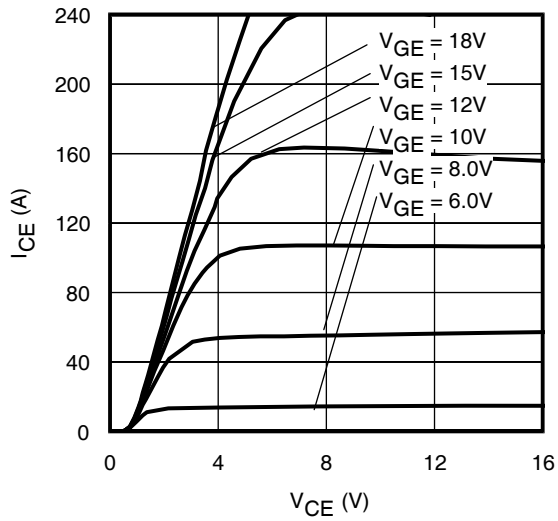


Fig 3. Typical Output Characteristics @ 125°C

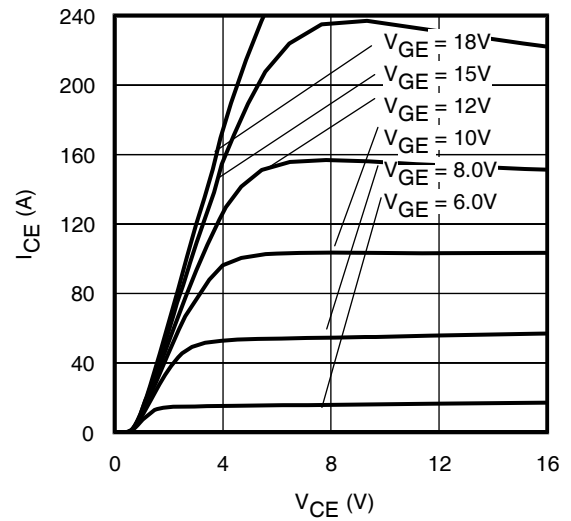


Fig 4. Typical Output Characteristics @ 150°C

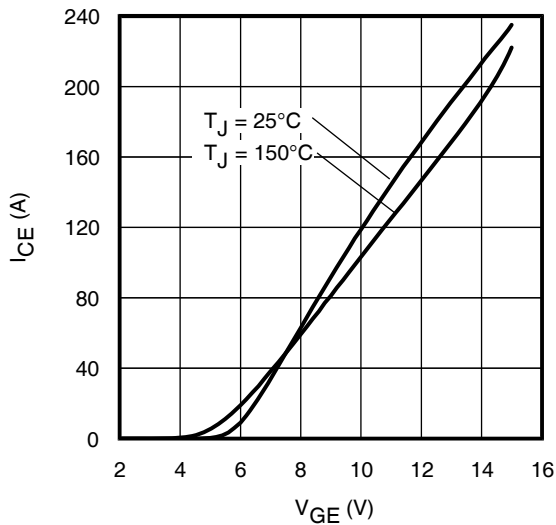


Fig 5. Typical Transfer Characteristics

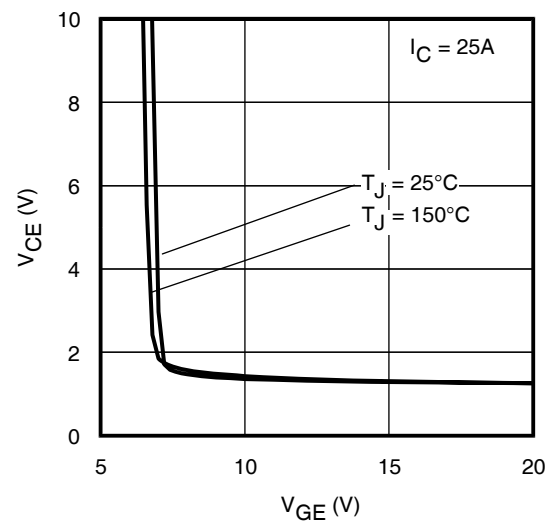


Fig 6.  $V_{CE(ON)}$  vs. Gate Voltage

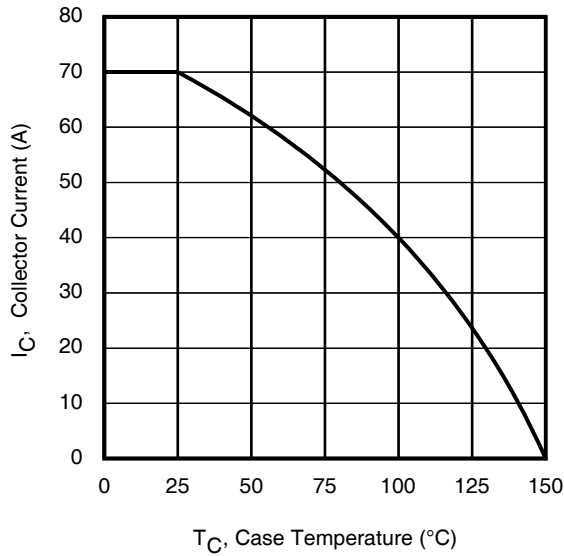


Fig 7. Maximum Collector Current vs. Case Temperature

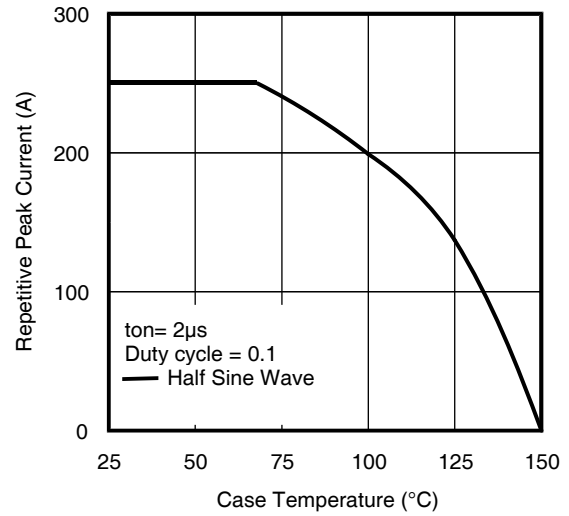


Fig 8. Typical Repetitive Peak Current vs. Case Temperature

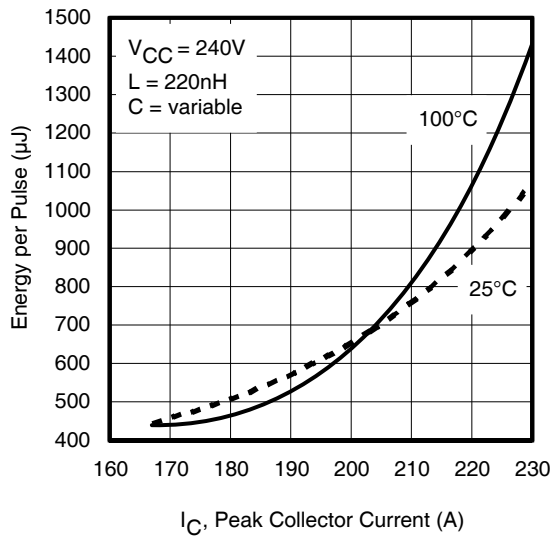


Fig 9. Typical  $E_{PULSE}$  vs. Collector Current

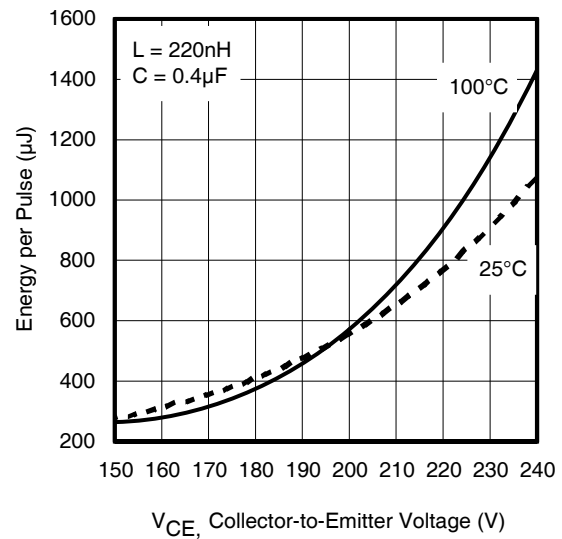


Fig 10. Typical  $E_{PULSE}$  vs. Collector-to-Emitter Voltage

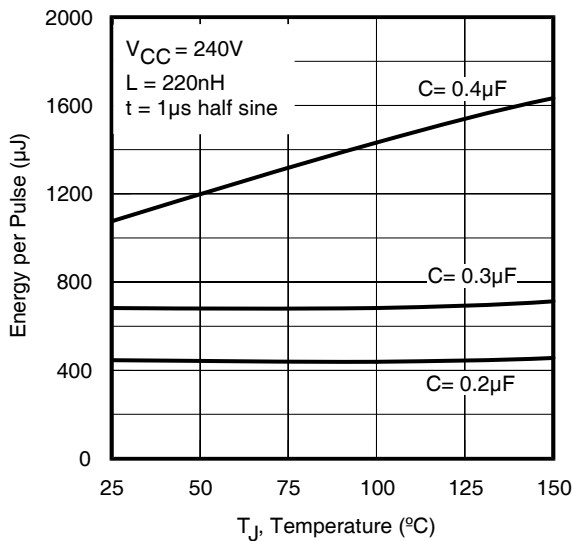


Fig 11.  $E_{PULSE}$  vs. Temperature

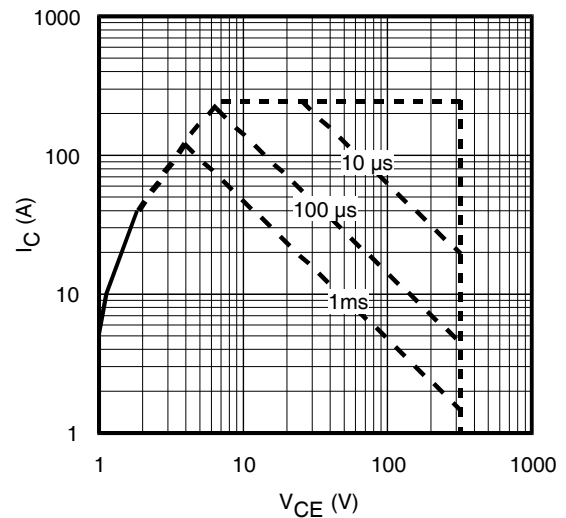


Fig 12. Forward Bias Safe Operating Area

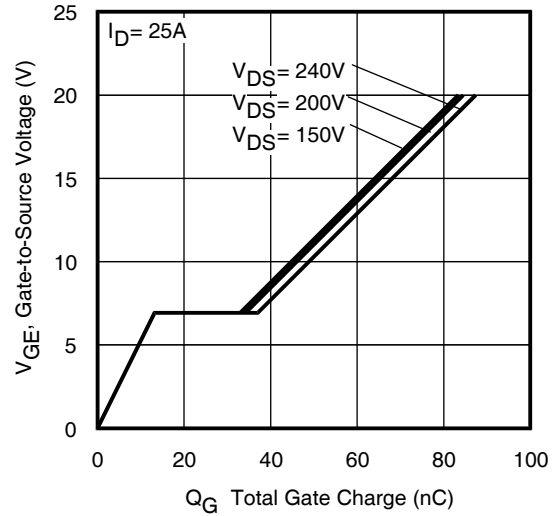
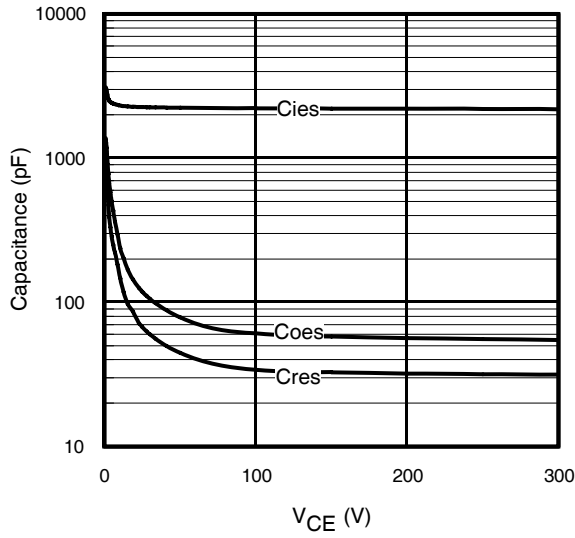


Fig 13. Typical Capacitance vs. Collector-to-Emitter Voltage

Fig 14. Typical Gate Charge vs. Gate-to-Source Voltage

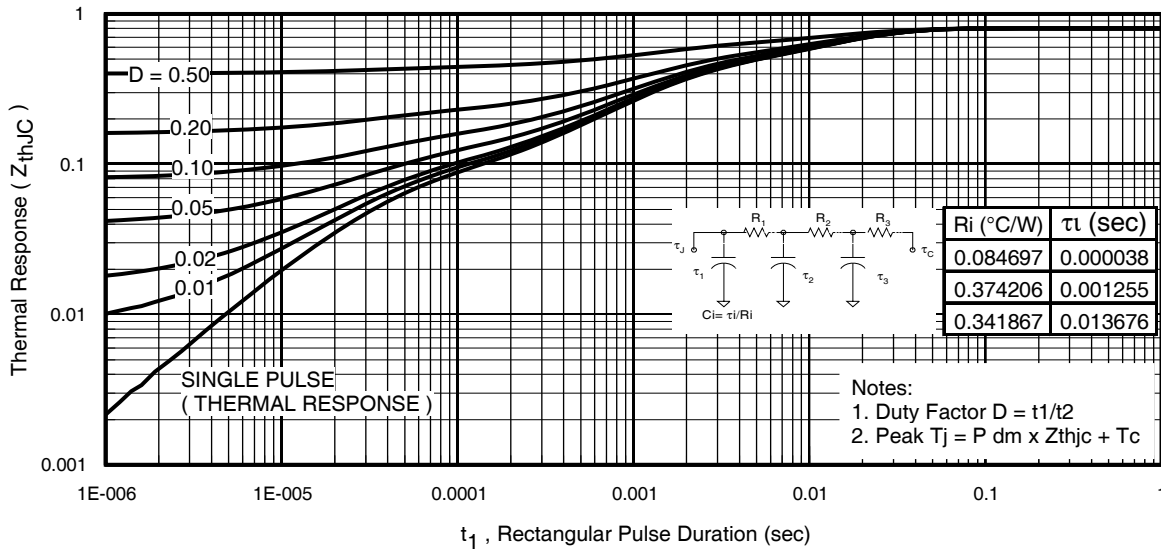
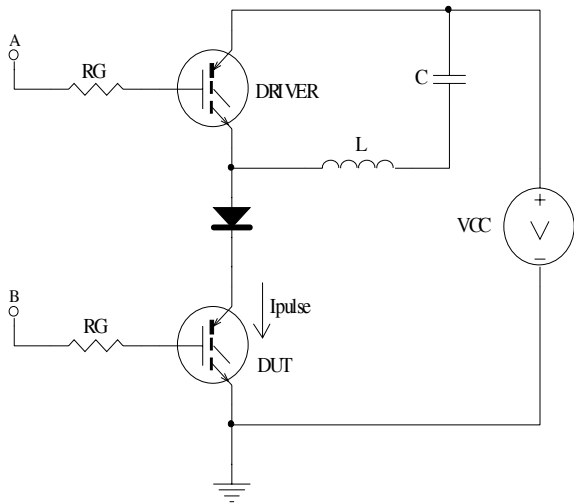
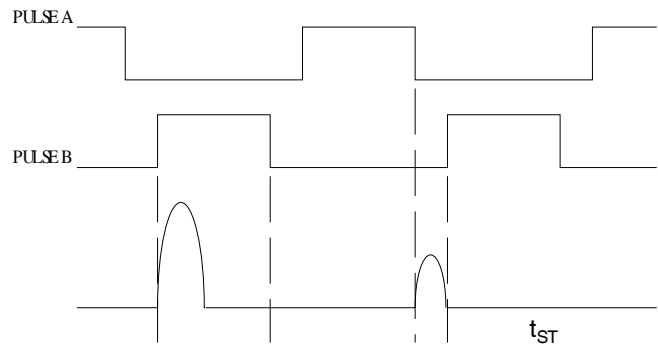


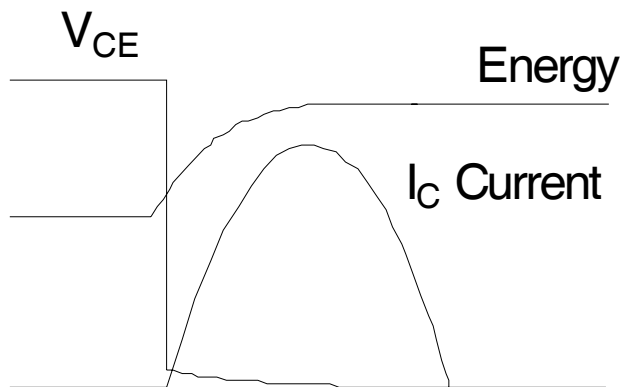
Fig 15. Maximum Effective Transient Thermal Impedance, Junction-to-Case (IGBT)



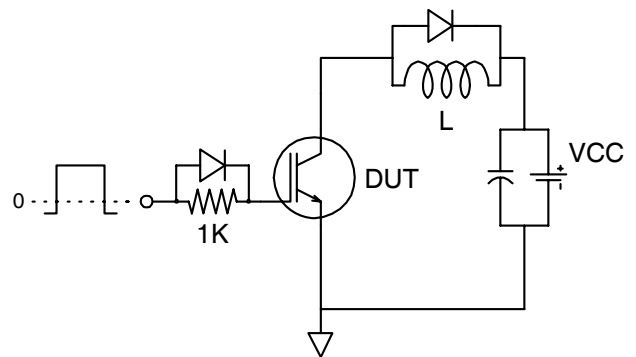
**Fig 16a.**  $t_{st}$  and  $E_{PULSE}$  Test Circuit



**Fig 16b.**  $t_{st}$  Test Waveforms

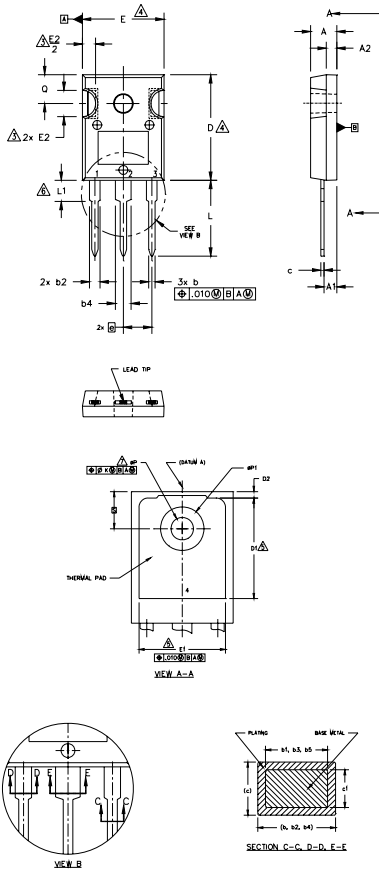


**Fig 16c.**  $E_{PULSE}$  Test Waveforms



**Fig. 17 -** Gate Charge Circuit (turn-off)

## TO-247AC Package Outline Dimensions are shown in millimeters (inches)



**NOTES:**

1. DIMENSIONING AND TOLERANCING AS PER ASME Y14.5M 1994.
2. DIMENSIONS ARE SHOWN IN INCHES.
3. CONTOUR OF SLOT OPTIONAL.
4. DIMENSION D & E DO NOT INCLUDE MOLD FLASH. MOLD FLASH SHALL NOT EXCEED .005" (0.127) PER SIDE. THESE DIMENSIONS ARE MEASURED AT THE OUTERMOST EXTREMES OF THE PLASTIC BODY.
5. THERMAL PAD CONTOUR OPTIONAL WITHIN DIMENSIONS D1 & E1.
6. LEAD FINISH UNCONTROLLED IN L1.
7.  $\phi P$  TO HAVE A MAXIMUM DRAFT ANGLE OF 1.5° TO THE TOP OF THE PART WITH A MAXIMUM HOLE DIAMETER OF .154 INCH.
8. OUTLINE CONFORMS TO JEDEC OUTLINE TO-247AC .

| SYMBOL    | DIMENSIONS |      |             |       | NOTES |
|-----------|------------|------|-------------|-------|-------|
|           | INCHES     |      | MILLIMETERS |       |       |
|           | MIN.       | MAX. | MIN.        | MAX.  |       |
| A         | .183       | .209 | 4.65        | 5.31  |       |
| A1        | .087       | .102 | 2.21        | 2.59  |       |
| A2        | .059       | .098 | 1.50        | 2.49  |       |
| b         | .039       | .055 | 0.99        | 1.40  |       |
| b1        | .039       | .053 | 0.99        | 1.35  |       |
| b2        | .065       | .094 | 1.65        | 2.39  |       |
| b3        | .065       | .092 | 1.65        | 2.34  |       |
| b4        | .102       | .135 | 2.59        | 3.43  |       |
| b5        | .102       | .133 | 2.59        | 3.38  |       |
| c         | .015       | .035 | 0.38        | 0.89  |       |
| c1        | .015       | .033 | 0.38        | 0.84  |       |
| D         | .776       | .815 | 19.71       | 20.70 | 4     |
| D1        | .515       | -    | 13.08       | -     | 5     |
| D2        | .020       | .053 | 0.51        | 1.35  |       |
| E         | .602       | .625 | 15.29       | 15.87 | 4     |
| E1        | .530       | -    | 13.46       | -     |       |
| E2        | .178       | .216 | 4.52        | 5.49  |       |
| e         | .215 BSC   |      | 5.46 BSC    |       |       |
| $\phi k$  | .010       |      | 0.25        |       |       |
| L         | .559       | .634 | 14.20       | 16.10 |       |
| L1        | .146       | .169 | 3.71        | 4.29  |       |
| $\phi P$  | .140       | .144 | 3.56        | 3.66  |       |
| $\phi P1$ | -          | .291 | -           | 7.39  |       |
| Q         | .209       | .224 | 5.31        | 5.69  |       |
| S         | .217 BSC   |      | 5.51 BSC    |       |       |

**LEAD ASSIGNMENTS**

**HEXFET**

- 1.- GATE
- 2.- DRAIN
- 3.- SOURCE
- 4.- DRAIN

**IGBTs, CoPACK**

- 1.- GATE
- 2.- COLLECTOR
- 3.- EMITTER
- 4.- COLLECTOR

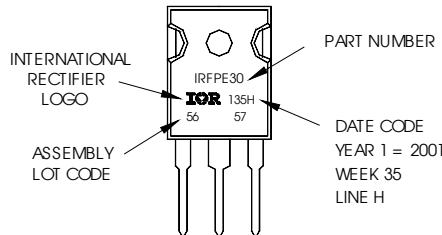
**DIODES**

- 1.- ANODE/OPEN
- 2.- CATHODE
- 3.- ANODE

## TO-247AC Part Marking Information

EXAMPLE: THIS IS AN IRFP30  
WITH ASSEMBLY  
LOT CODE 5657  
ASSEMBLED ON WW35, 2001  
IN THE ASSEMBLY LINE "H"

Note: "P" in assembly line position  
indicates "Lead-Free"



### TO-247AC package is not recommended for Surface Mount Application.

Note: For the most current drawing please refer to IR website at: <http://www.irf.com/package/>

The specifications set forth in this data sheet are the sole and exclusive specifications applicable to the identified product, and no specifications or features are implied whether by industry custom, sampling or otherwise. We qualify our products in accordance with our internal practices and procedures, which by their nature do not include qualification to all possible or even all widely used applications. Without limitation, we have not qualified our product for medical use or applications involving hi-reliability applications. Customers are encouraged to and responsible for qualifying product to their own use and their own application environments, especially where particular features are critical to operational performance or safety. Please contact your IR representative if you have specific design or use requirements or for further information.

Data and specifications subject to change without notice. This product has been designed for the Industrial market. Qualification Standards can be found on IR's Web site.