

# ZL70251

## Ultra-Low-Power Sub-GHz RF Transceiver

Microsemi's ZL70251 RF transceiver is the lowest-power sub-GHz ISM-band radio for continuous-monitoring, wireless-sensor applications. Because both continuous and peak power supply requirements are ultralow, the ZL70251 is the industry's leading choice for sensor networks that are powered by a coin-cell battery or an energy-harvesting power source.

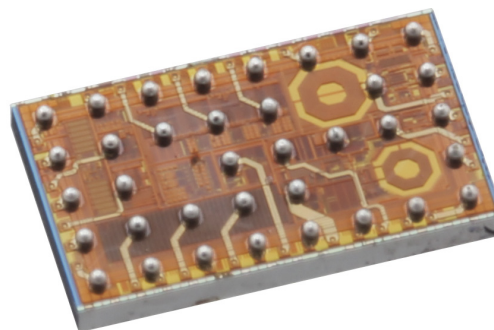
The ZL70251 is also highly integrated. Besides the antenna and in some cases its matching network, only a crystal, resistor, and two decoupling capacitors are required. Available as a 2-mm-by-3-mm CSP, the device enables applications with a very small footprint.

The ZL70251 device operates in unlicensed frequency bands between 779 and 965 MHz and offers a maximum data rate of 186 kbit/s to support voice communication. For data communication, the ZL70251 supports extremely low power consumption in packet-based networks.

The device includes the RF transceiver as well as a Media Access Controller (MAC) that performs most link support functions including Received Signal Strength Indication (RSSI), Clear Channel Assessment (CCA), sniff, preamble and sync, packetization, and whitening. The device uses standard interfaces, enabling easy integration with a standard microcontroller or Digital Signal Processor (DSP).

### Key Features

- Ultralow transmit and receive current of less than 2.4 mA
- Low supply voltage of 1.2 V to 1.9 V
- Operates between 779 and 965 MHz (915-MHz ISM band in North America; 868-MHz SRD band in Europe; 779- to 787-MHz band in China)
- High data rate (186 kbit/s raw)
- Very small footprint
  - Few external components (crystal, resistor, and two decoupling capacitors)
  - CSP package: 2 mm by 3 mm
- Standard interfaces
  - SPI bus master for packet data
  - Two-wire for status and control
- Integrated MAC performing all link layer basic functions
- Full functionality over industrial temperature range (-40°C to +85°C)



### Applications

The ZL70251 ultra-low-power transceiver is designed for short-range wireless applications, including:

- Battery-powered wireless sensor network
- Applications relying on energy harvesting
- Wireless communication with very long battery life
- Body-area network
- Voice/compressed-Audio Communication
- Active RFID
- Smart cards
- Inventory management / asset monitoring
- Data loggers
- Ambient monitoring
- In-vehicle sensors
- Building automation and home security
- Package transport tracking sensors
- Military sensors

### Ordering Information

ZL70251UEB2 RF Transceiver  
36-Pin CSP, SAC405, in T&R

ZLE70251BADx WSN Evaluation Platform

ZLE70251BADA Application Development Kit (ADK)

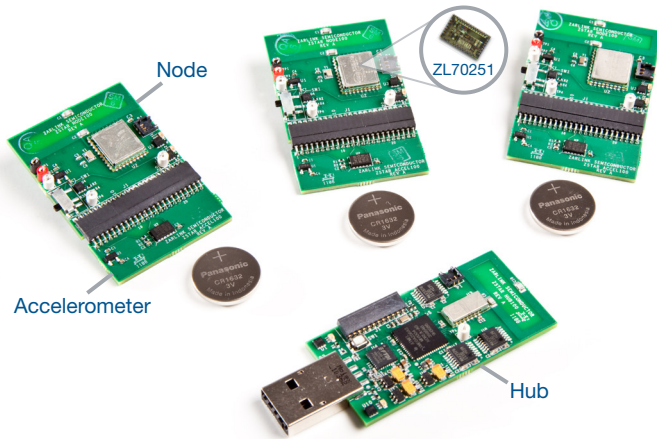
For more information on Microsemi's ISM-band radio transceiver technology, please refer to our website at <http://www.microsemi.com/ultra-low-power-wireless/sub-ghz-radio-transceivers>.

# ZL70251

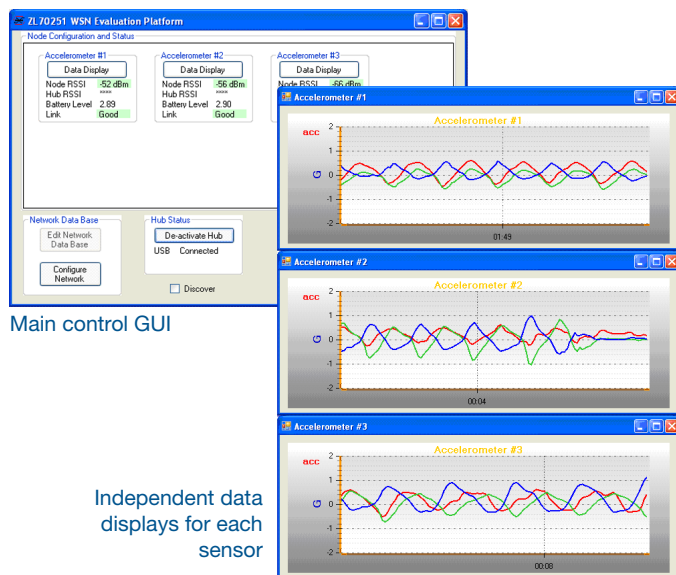
## Ultra-Low-Power Sub-GHz RF Transceiver

### ZL70251 WSN Evaluation Platform Kit with Z-Star Protocol

The ZL70251 WSN Evaluation Platform Kit includes one hub and three accelerometer nodes to demonstrate a high-data-rate, continuous-monitoring application where multiple nodes interact with the hub seamlessly using Z-Star protocol.



The included Z-Star protocol stack software supports Carrier Sense Multiple Access (CSMA) transactions in a star configuration. This robust, proprietary protocol is optimized for ultra-low-power wireless sensor networks and minimizes both packet size and transaction time. The protocol stack may be further optimized for specific customer applications (for example, by varying packet length, latency, and frequency of transmission).



### Optional Sensor Boards

The ZL70251 WSN Evaluation Platform can be used to develop custom sensor applications. Alternatively, other sensor boards are currently available or being developed by Microsemi for evaluation and rapid development.

- Healthcare applications
  - ECG
  - SPO2
- Accelerometer
  - Physical therapy and rehabilitation monitoring
  - Body activity monitoring for elderly and recovering patients

### WSN Evaluation Platform Kit Contents

The ZL70251 Wireless Sensor Network (WSN) Evaluation Platform kit comprises:

- One Z-Star hub, including:
  - ZL70251 with matching network and loop antenna
  - USB interface to control the Z-Star network and to allow data from a Z-Star node to stream to a PC for display and processing
  - Microcontroller running the Z-Star protocol stack
- Three Z-Star nodes, each with:
  - ZL70251 with matching network and loop antenna
  - Microcontroller running the Z-Star protocol and accelerometer application
  - Plug-in accelerometer sensor board that attaches to the Z-Star node. Accelerometer sensor board uses a low-power three-axis accelerometer programmed to automatically sample each axis every 10 ms.
  - CR2032 coin-cell battery. Accelerometer node runs continuously on the battery for over 17 days.
- Z-Star Protocol Stack Software
  - C-based API and a USB driver that run both on the PC and in embedded software (hub and node)
  - Two types of displays (see figure, left):
    - Main display, allowing configuration and control of sensor network
    - Real-time graphs of data from each sensor
  - Source code is available with software license agreement
- Full documentation

\*Requires a Windows-based PC to run graphical user interface (GUI) software. GUI application installs and runs on Windows XP or Windows 7.

# ZLE70251 RF Telemetry Application Development Kit

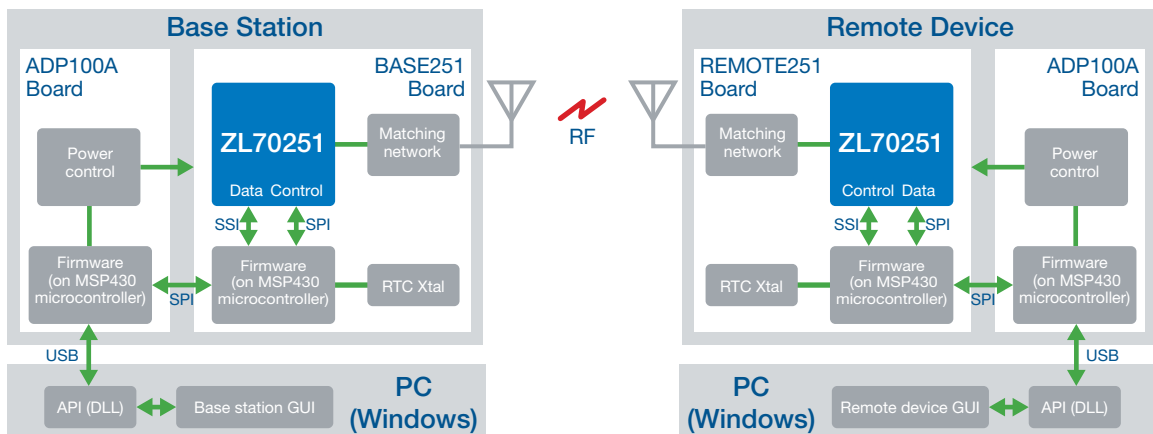
Microsemi's ZLE70251 Application Development Kit (ADK) enables rapid evaluation, prototyping, and development of RF communication systems. The kit combines hardware and software to create an end-to-end communication system that demonstrates the ZL70251's exceptional energy efficiency, high integration, and high data rate.

The ZLE70251 ADK is an out-of-the-box solution that includes all hardware\* and software required to quickly and easily design RF communication systems. The kit includes:



- Application Development Platform (ADP100A) board
  - Bridge board to allow for USB2.0 interface between a PC running the ADK software and the application processor on the Microsemi evaluation boards
  - Two programmable power supplies with measurement capability
  - USB-rechargeable Li-Ion battery to allow hours of operation disconnected from the host PC
- Evaluation boards (BASE251 and REMOTE251)
  - Plug into an ADP to provide all capabilities to develop a ZL70251-based wireless sensor
  - RF section includes the ZL70251, probe points of key digital and analog signals, a matching network for 779- to 928-MHz operation (including selectable SAW filters for the European SRD band and the North American ISM band), and an SMA-based interface to a standard 50-Ω antenna
  - Microcontroller with JTAG debug interface controlling the ZL70251
- Programmer Cable Adapter (PCA100) board
  - Enables programming/code download and debugger support
- Embedded firmware
  - Firmware on ADP100A and evaluation boards
  - Includes programming examples that help in the development of ZL70251 applications
- Pair of 868-MHz and 916-MHz dipole antennas
- PC software
  - Written in C with thoroughly commented source code available to support product development
  - GUI application that provides a user-friendly visual interface for controlling and demonstrating the capabilities of a ZL70251-enabled RF system including trim and tune, Clear Channel Assessment (CCA), Bit Error Rate (BER), and missed packets, as well as accessing ZL70251-specific registers
  - Well-defined application programming interface (API) realized through a Windows DLL
- Full documentation
  - CD-ROM includes ADK Getting Started Guide, Source Code Overview, and extensive hardware documentation (board schematics, layout, Gerber files, and Bill of Material (BOM)) for all included boards

Using the ZLE70251 ADK, customers can quickly create their own custom board designs and use Microsemi software as a starting point for software development for specific ZL70251-enabled systems. Microsemi also offers the Z-Star protocol stack, which supports wireless sensor networks.



# ZL70251

## Ultra-Low-Power Sub-GHz RF Transceiver

### Short-Range, Battery-Powered Communications

The ultra-low-power ZL70251 RF transceiver enables wireless telemetry in applications powered by coin-cell batteries or energy harvesters, where wireless telemetry was previously unfeasible. As illustrated below, end-applications may include wireless sensor networks (including on-body sensors) or voice communication.

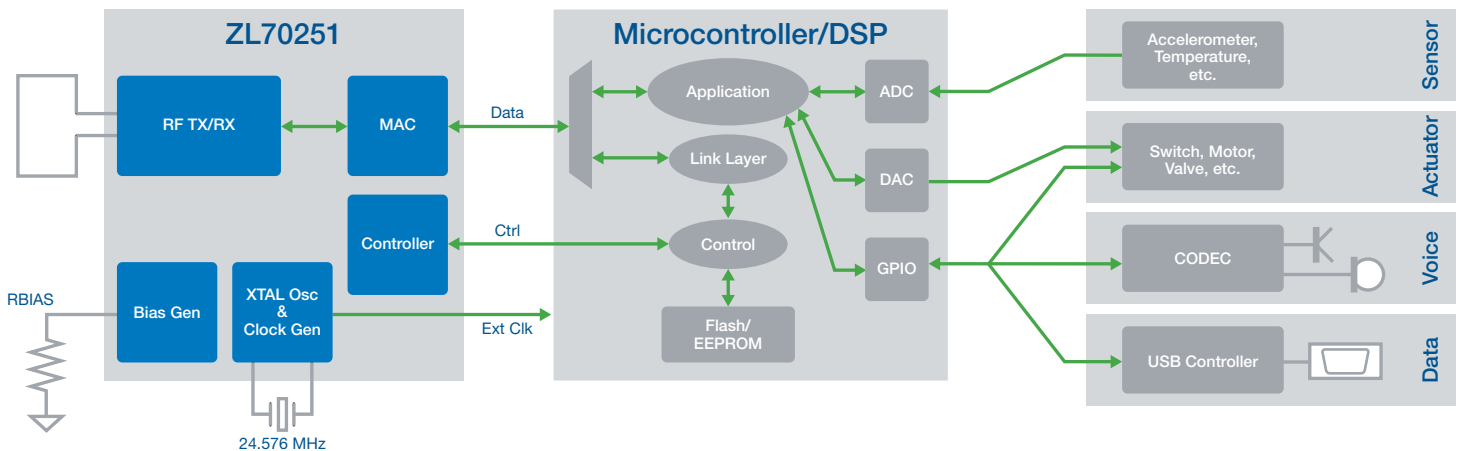
With a typical current consumption below 2.4 mA in both transmit (-11 dBm) and receive (-94 dBm sensitivity), and a data rate of 186 kbit/s, the ZL70251 enables bidirectional RF links over a distance of more than 100 meters (based on antenna gain and matching loss).

The output power is programmable and can be reduced to -24 dBm to save power in cases where the link budget allows. Output power can also be increased up to 0 dBm for more range or to allow for system losses, such as a very small antenna or body tissue absorption.

In order to achieve the minimum possible power consumption, the ZL70251 offers a large number of optimization parameters, all available to the user via the control interface. To streamline the setup and optimization process, most parameters have an on-chip automatic trim capability. The frequency tuning is also highly automated.

While consuming very little power, the ZL70251 also includes a highly flexible MAC that offers all the basic functions needed to implement a link layer with the minimum amount of data transfer between the ZL70251 and its controller. Some of the capabilities include:

- Clear channel assessment
- Automatic receive or sleep after sniff
- Automatic turn-around in bidirectional mode
- Packetization
- Preamble and frame sync
- Whitening
- Receive on preamble detection or RSSI threshold



Microsemi makes no warranty, representation, or guarantee regarding the information contained herein or the suitability of its products and services for any particular purpose, nor does Microsemi assume any liability whatsoever arising out of the application or use of any product or circuit. The products sold hereunder and any other products sold by Microsemi have been subject to limited testing and should not be used in conjunction with mission-critical equipment or applications. Any performance specifications are believed to be reliable but are not verified, and Buyer must conduct and complete all performance and other testing of the products, alone and together with, or installed in, any end-products. Buyer shall not rely on any data and performance specifications or parameters provided by Microsemi. It is the Buyer's responsibility to independently determine suitability of any products and to test and verify the same. The information provided by Microsemi hereunder is provided "as is, where is" and with all faults, and the entire risk associated with such information is entirely with the Buyer. Microsemi does not grant, explicitly or implicitly, to any party any patent rights, licenses, or any other IP rights, whether with regard to such information itself or anything described by such information. Information provided in this document is proprietary to Microsemi, and Microsemi reserves the right to make any changes to the information in this document or to any products and services at any time without notice.



**Microsemi Corporation Headquarters**  
 One Enterprise, Aliso Viejo, CA 92656 USA  
 Within the USA: +1 (800) 713-4113  
 Outside the USA: +1 (949) 380-6100  
 Sales: +1 (949) 380-6136  
 Fax: +1 (949) 215-4996  
 email: sales.support@microsemi.com  
 www.microsemi.com

Microsemi Corporation (Nasdaq: MSCC) offers a comprehensive portfolio of semiconductor and system solutions for communications, defense & security, aerospace and industrial markets. Products include high-performance and radiation-hardened analog mixed-signal integrated circuits, FPGAs, SoCs and ASICs; power management products; timing and synchronization devices and precise time solutions, setting the world's standard for time; voice processing devices; RF solutions; discrete components; security technologies and scalable anti-tamper products; Power-over-Ethernet ICs and midspans; as well as custom design capabilities and services. Microsemi is headquartered in Aliso Viejo, Calif., and has approximately 3,400 employees globally. Learn more at [www.microsemi.com](http://www.microsemi.com).

©2015 Microsemi Corporation. All rights reserved. Microsemi and the Microsemi logo are trademarks of Microsemi Corporation. All other trademarks and service marks are the property of their respective owners.

Publication Number: ZL70251-PP / 151551-1 / 02.15