



1214-110V

110 Watts - 50 Volts, 330 μ s, 10%
Radar 1200 - 1400 MHz

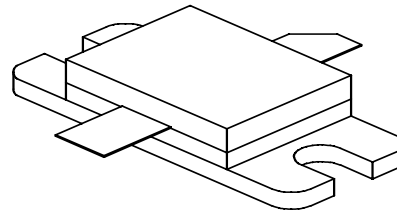
GENERAL DESCRIPTION

The 1214-110V is an internally matched, COMMON BASE transistor capable of providing 110 Watts of pulsed RF output power at 330 μ s pulse width, 10% duty factor across the band 1200 to 1400 MHz. This hermetically solder-sealed transistor is specifically designed for L-Band radar applications. It utilizes gold metallization and diffused emitter ballasting to provide high reliability and supreme ruggedness.

ABSOLUTE MAXIMUM RATINGS

Maximum Power Dissipation @ 25°C	270 Watts
Maximum Voltage and Current	
BVces Collector to Emitter Voltage	75 Volts
BVebo Emitter to Base Voltage	3.0 Volts
Ic Collector Current	8 Amps
Maximum Temperatures	
Storage Temperature	- 65 to + 200°C
Operating Junction Temperature	+ 200°C

CASE OUTLINE 55KT, STYLE 1



ELECTRICAL CHARACTERISTICS @ 25 °C

SYMBOL	CHARACTERISTICS	TEST CONDITIONS	MIN	TYP	MAX	UNITS
Pout	Power Out	Freq = 1200 – 1400 MHz	110		160	Watts
Pg	Power Gain	Vcc = 50 Volts	7.4			dB
η_c	Collector Efficiency	Pin = 20 Watts	50	55		%
RI	Input Return loss		10			dB
Droop	Droop	Pulse Width = 330 μ s			0.5	dB
Flatness	Flatness	Duty Factor = 10%			1.0	dB
VSWR-S	Load Mismatch Stability				1.5:1	
VSWR-T	Load Mismatch Tolerance				3.0:1	

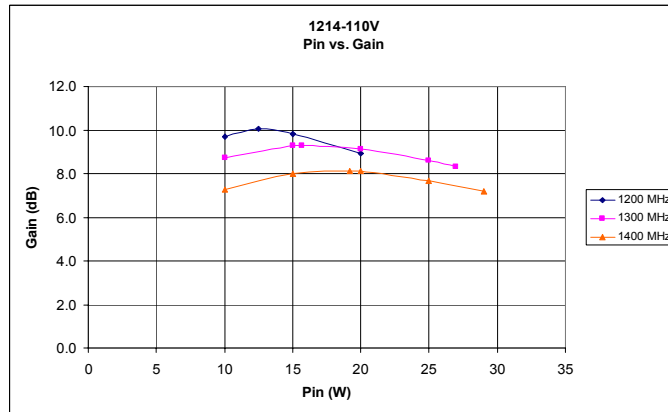
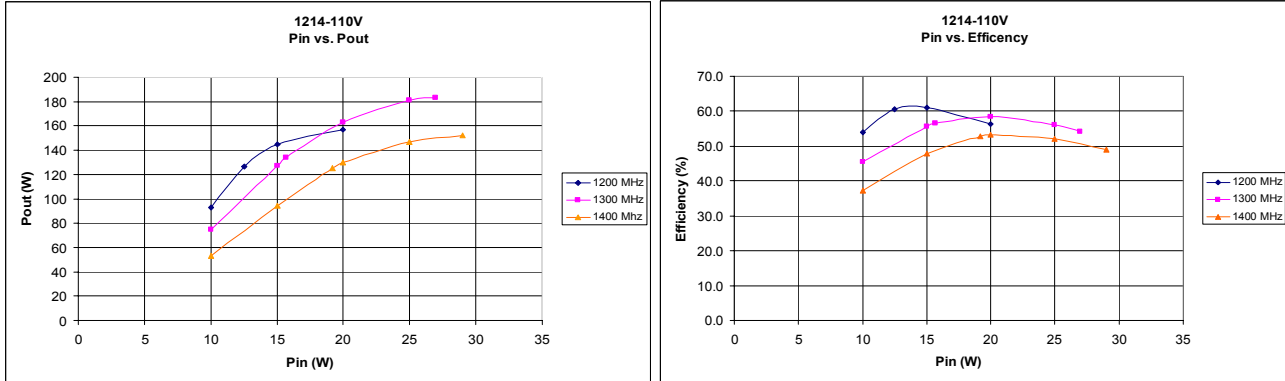
FUNCTIONAL CHARACTERISTICS @ 25°C

Bvces	Collector to Emitter Breakdown	Ic = 100 mA	75			Volts
Ices	Collector to Emitter Leakage	Vce = 50 Volts			10	mA
θ_{jc}^1	Thermal Resistance	Rated Pulse Condition			0.5	°C/W

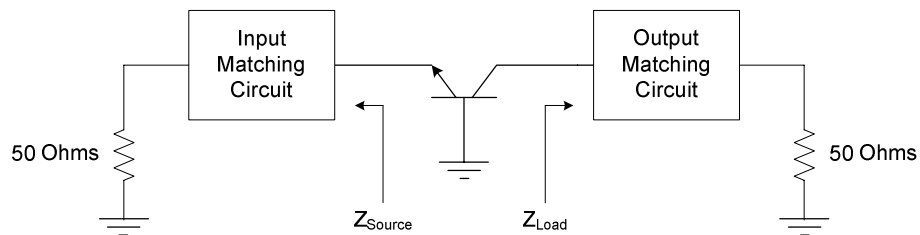


1214-110V

Performance Curves



Impedance Information



Frequencies (MHz)	$Z_{Source} (\Omega)$	$Z_{Load} (\Omega)^2$
1200	3.36-j3.12	4.97+j0.15
1300	3.5-j2.4	5.33-j2.86
1400	3.81-j1.3	2.88-j3.86

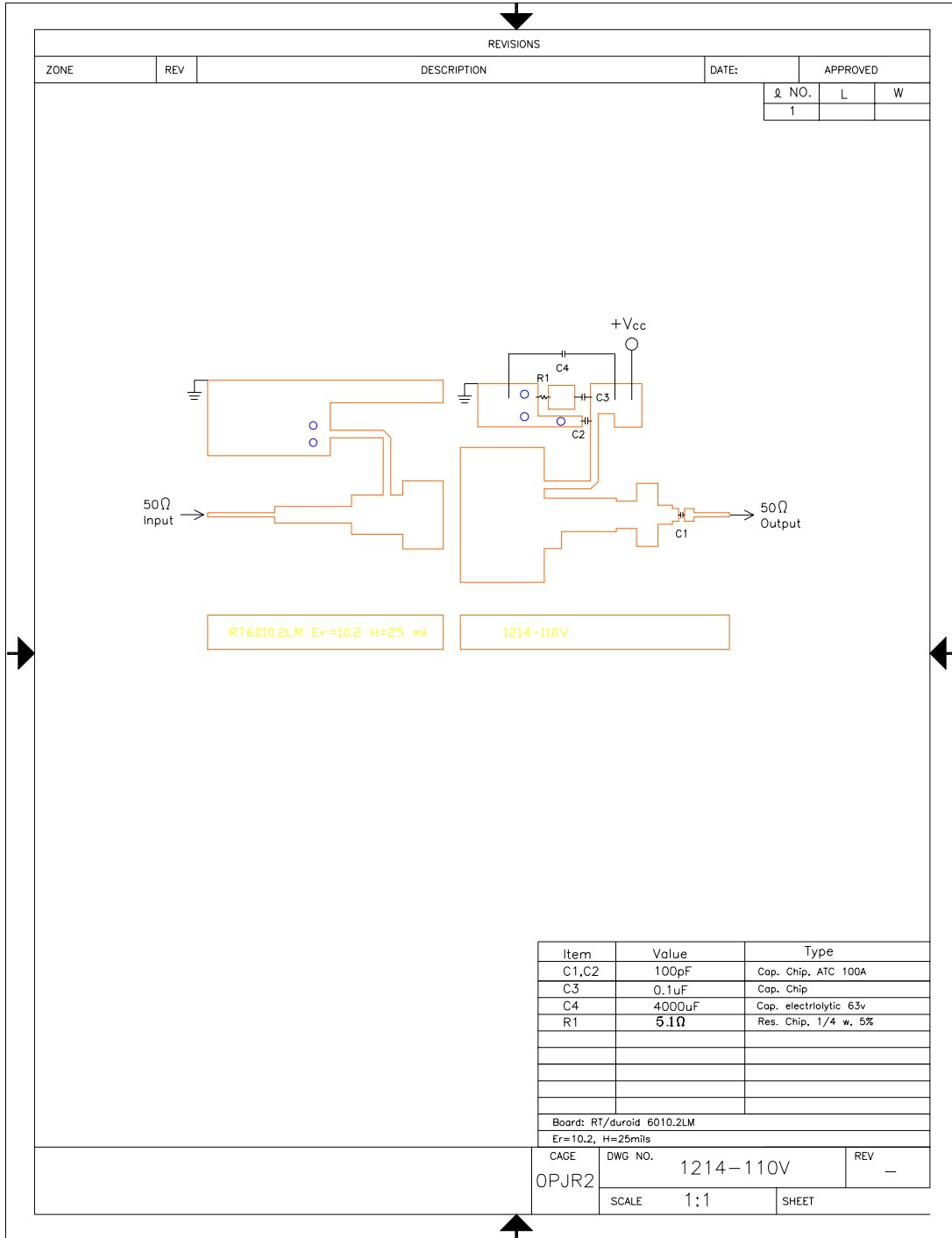
Note 2: Z_{Load} exclusive of bias circuit

MICROSEMI CORP. RESERVES THE RIGHT TO MAKE CHANGES WITHOUT FURTHER NOTICE. TO VERIFY THE CURRENT VERSION PLEASE CHECK OUR WEB SITE AT WWW.MICROSEMI.COM OR CONTACT OUR FACTORY DIRECT.
 Microsemi Corp. 3000 Oakmead Village Drive, Santa Clara, CA 95051-0808 Tel. 408 / 986-8031 Fax 408 / 869-2324



1214-110V

Test Circuit



MICROSEMI CORP. RESERVES THE RIGHT TO MAKE CHANGES WITHOUT FURTHER NOTICE. TO VERIFY THE CURRENT VERSION PLEASE CHECK OUR WEB SITE AT WWW.MICROSEMI.COM OR CONTACT OUR FACTORY DIRECT.
 Microsemi Corp. 3000 Oakmead Village Drive, Santa Clara, CA 95051-0808 Tel. 408 / 986-8031 Fax 408 / 869-2324

1214-110V

