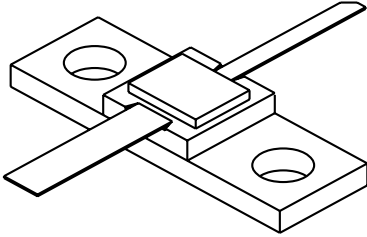


# 2224-6L

6 Watts, 22 Volts, Class C  
Microwave 2200-2400 MHz

<p><b>GENERAL DESCRIPTION</b></p> <p>The 2224-6L is a COMMON BASE transistor capable of providing 6 Watts, Class C output power over the band 2200-2400 MHz. The transistor includes input prematching for full Broadband capability. Gold metalization and diffused ballasting are used to provide high reliability and supreme ruggedness. The transistor uses a fully hermetic High Temperature Solder Sealed package.</p>	<p><b>CASE OUTLINE</b> <b>55LV STYLE 1</b></p> 													
<p><b>ABSOLUTE MAXIMUM RATINGS</b></p> <p>Maximum Power Dissipation @ 25°C <span style="float: right;">22 Watts</span></p> <p><b>Maximum Voltage and Current</b></p> <table style="width: 100%; border: none;"> <tr> <td style="width: 15%;">BVces</td> <td style="width: 45%;">Collector to Emitter Voltage</td> <td style="width: 40%; text-align: right;">40 Volts</td> </tr> <tr> <td>BVebo</td> <td>Emitter to Base Voltage</td> <td style="text-align: right;">3.5 Volts</td> </tr> <tr> <td>Ic</td> <td>Collector Current</td> <td style="text-align: right;">1.25 Amps</td> </tr> </table> <p><b>Maximum Temperatures</b></p> <table style="width: 100%; border: none;"> <tr> <td style="width: 45%;">Storage Temperature</td> <td style="text-align: right;">- 40 to + 200°C</td> </tr> <tr> <td>Operating Junction Temperature</td> <td style="text-align: right;">+ 200°C</td> </tr> </table>	BVces	Collector to Emitter Voltage	40 Volts	BVebo	Emitter to Base Voltage	3.5 Volts	Ic	Collector Current	1.25 Amps	Storage Temperature	- 40 to + 200°C	Operating Junction Temperature	+ 200°C	
BVces	Collector to Emitter Voltage	40 Volts												
BVebo	Emitter to Base Voltage	3.5 Volts												
Ic	Collector Current	1.25 Amps												
Storage Temperature	- 40 to + 200°C													
Operating Junction Temperature	+ 200°C													

## ELECTRICAL CHARACTERISTICS @ 25 °C

SYMBOL	CHARACTERISTICS	TEST CONDITIONS	MIN	TYP	MAX	UNITS
<b>Pout</b>	Power Out	F = 2200-2400 MHz	6.0			Watts
<b>Pin</b>	Power Input	Vcc = 22 Volts			1.2	Watts
<b>Pg</b>	Power Gain		7.0			dB
<b>ηc</b>	Efficiency			40		%
<b>VSWR</b>	Load Mismatch Tolerance	Pout = 6.0 Watts			10:1	

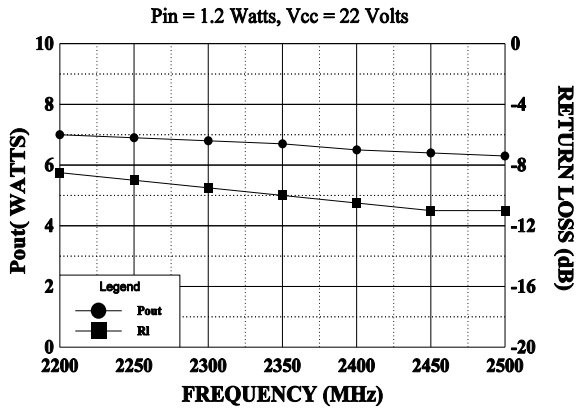
<b>BVces</b>	Collector to Emitter Breakdown	Ic = 10 mA	40			Volts
<b>BVebo</b>	Emitter to Base Breakdown	Ie = 5 mA	3.5			Volts
<b>Hfe</b>	Current Gain	Vce = 5 V, Ic = 1 A	20		120	
<b>Cob</b>	Output Capacitance	Vcb = 22 F = 1 MHz		7		pF
<b>θjc</b>	Thermal Resistance	Tc = 25°C			8.0	°C/W

Initial Issue December 15, 1994

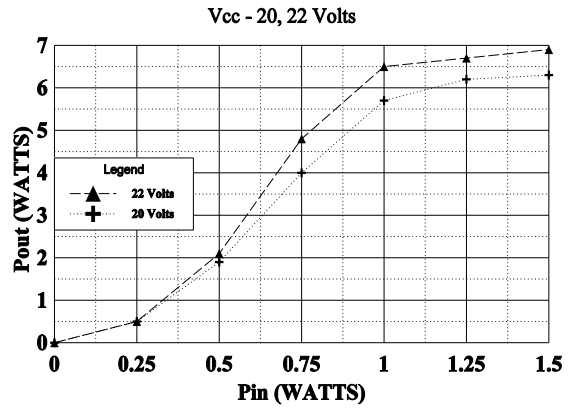
GHZ TECHNOLOGY INC. RESERVES THE RIGHT TO MAKE CHANGES WITHOUT FURTHER NOTICE. GHZ RECOMMENDS THAT BEFORE THE PRODUCT(S) DESCRIBED HEREIN ARE WRITTEN INTO SPECIFICATIONS, OR USED IN CRITICAL APPLICATIONS, THAT THE PERFORMANCE CHARACTERISTICS BE VERIFIED BY CONTACTING THE FACTORY.

GHz Technology Inc. 3000 Oakmead Village Drive, Santa Clara, CA 95051-0808 Tel. 408 / 986-8031 Fax 408 / 986-8120

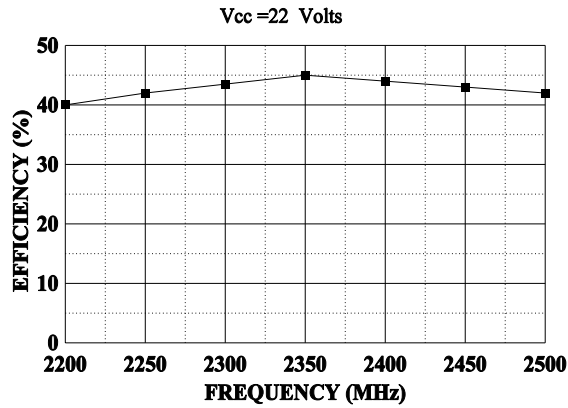
**BROADBAND POWER OUT & RETURN LOSS**



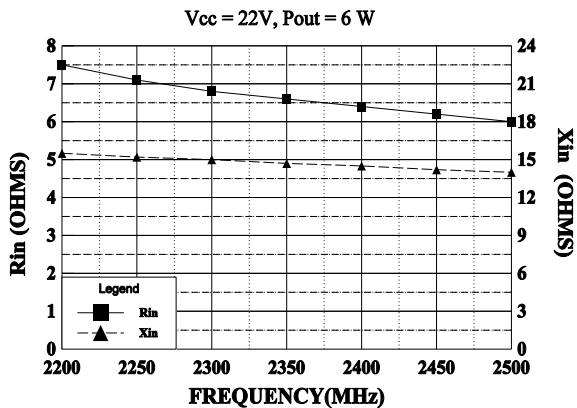
**POWER OUTPUT vs POWER INPUT**



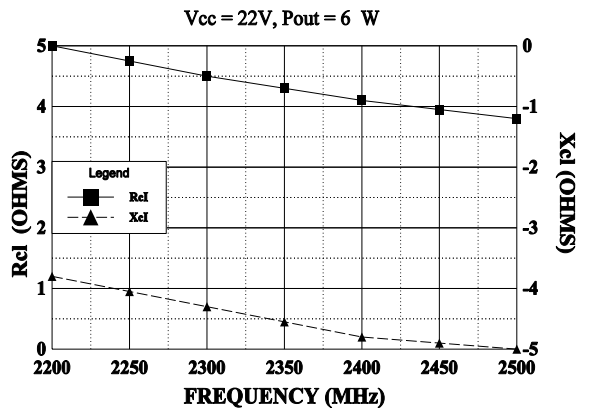
**EFFICIENCY vs FREQUENCY**



**INPUT IMPEDANCE**

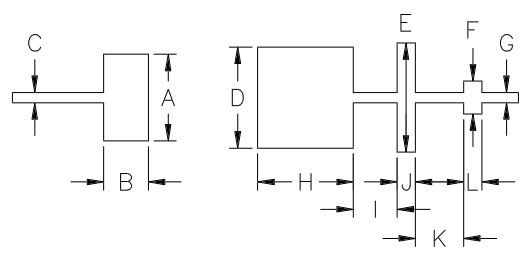


**LOAD IMPEDANCE**



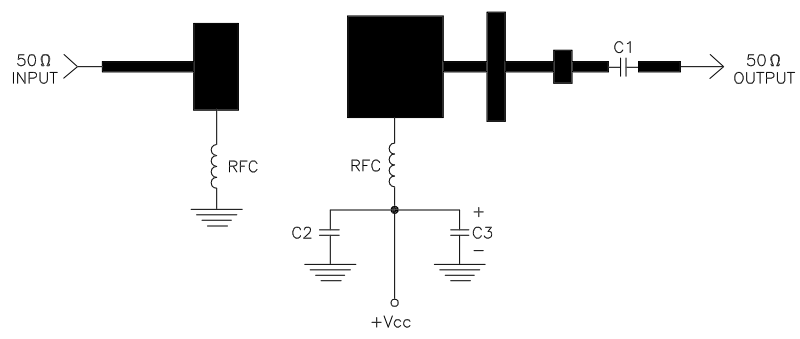
REVISIONS

ZONE	REV	DESCRIPTION	DATE	APPROVED
------	-----	-------------	------	----------



DIM	INCHES
A	.475
B	.245
C	.053
D	.555
E	.600
F	.180
G	.053
H	.525
I	.240
J	.100
K	.265
L	.100

2224-6L TEST CIRCUIT



DIELECTRIC = 20 MIL THICK TFE Er = 2.43  
 C1, C2 = 62pF CHIP ATC "B"  
 C3 = 10 MFD @ 35V  
 RFC = 4 turns #22 wire 1/16" I.D.



CAGE OPJR2	DWG NO. 2224-6L	REV A
SCALE 1/1	SHEET	