

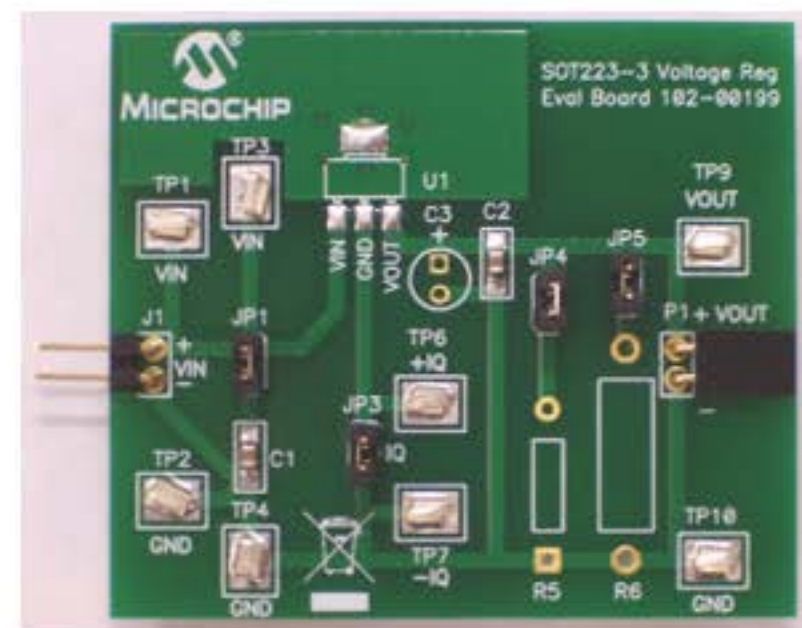
SOT223-3 Voltage Regulator Evaluation Board [Buy Now](#)



Part Number: SOT223-3EV-VREG

[Documentation & Software](#)

The SOT223-3 Voltage Regulator Evaluation Board is designed to evaluate and test voltage regulators. By soldering the desired device to the evaluation board, the user can easily validate several parameters of the device.


[Features](#)
[Package Contents](#)

The SOT223-3 Voltage Regulator Evaluation Board can be broken up into 3 functional blocks. These blocks are:

- Input Capacitance
- Ground Current Measurement
- Load Resistor

[Documentation & Software](#)
[Back To Top](#)

Documents	Last Updated	Size
SOT223-3 Voltage Regulator Eval Board User's Guide	4/29/2009 1:03:51 PM	550KB
SOT223-3 Voltage Regulator Eval Board Gerbers	4/29/2009 11:47:55 AM	94KB