

MIC45404 Eval Board ★

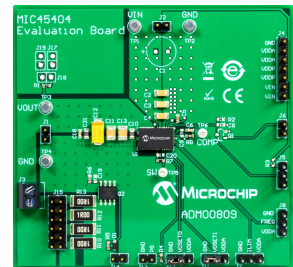
Part Number: ADM00809

BUY
IT NOW



Share

The MIC45404 Evaluation Board is used to evaluate the MIC45404 Module, which is optimized for high efficiency at low output voltage and incorporates a DC to DC regulator, bootstrap capacitor, high-frequency input capacitor and an inductor. The input voltage range for this board ranges from 4.5V to 19V while the output voltage is pin selectable from 0.7V to 3.3V at 5A. Additionally, an on-board load transient generator circuit and connections for loop gain measurements are provided.



Features

Package Contents

- Input Voltage Range: 4.5V to 19V
- Output Current: Up to 5A
- Pin-Selectable Output Voltages: 0.7V, 0.8V, 0.9V, 1.0V, 1.2V, 1.5V, 1.8V, 2.5V, 3.3V
- Pin-Selectable Current Limit
- Pin-Selectable Switching Frequency
- -40°C to +125°C Junction Temperature Range

Documentation & Software

[Back To Top](#)

Documents	Last Updated	Size	
★ MIC45404 Evaluation Board (ADM00809) Gerbers	8/4/2017 5:32:09 AM	594KB	
★ MIC45404 Evaluation Board (ADM00809) Schematic	8/4/2017 5:32:09 AM	555KB	
★ MIC45404 Evaluation Board (ADM00809) BOM	8/4/2017 5:32:09 AM	33KB	
★ MIC45404 Data Sheet	3/16/2017 2:11:13 PM	1MB	
★ MIC45404	12/28/2015 4:50:00 PM	0KB	

