

---

### ATA6663/ATA6664 Development Board

---

#### ATA6663/ATA6664

### Introduction

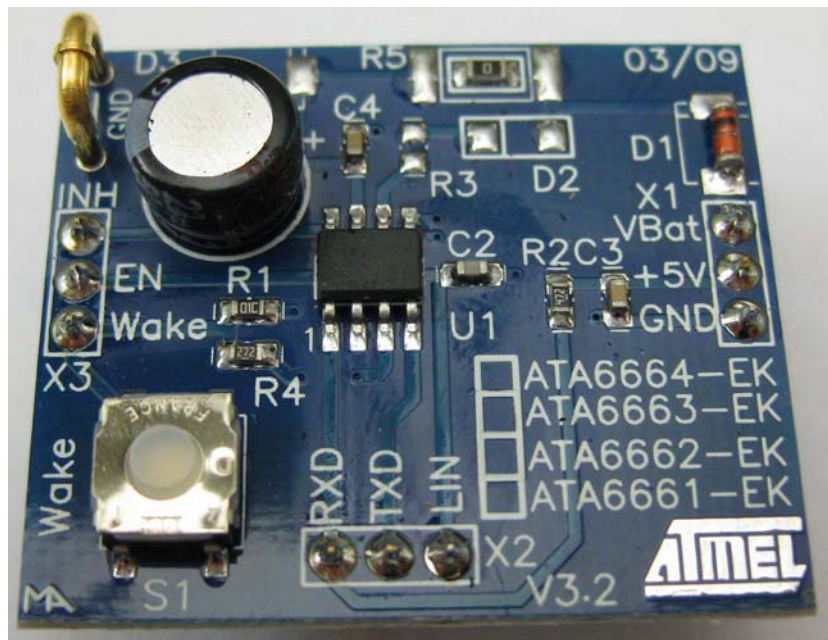
---

The development board for the Atmel® ATA6663/ATA6664 (Atmel ATA6663-EK, ATA6664-EK) is designed to give users a quick start using these ICs and prototyping and testing new designs. The Atmel ATA6663/ATA6664 is a fully integrated LIN transceiver complying with the LIN 2.0, 2.1 specification and SAEJ2602-2. The devices are nearly identical, the only difference is that the TXD dominant timeout-timer is disabled at the Atmel ATA6664 so this device is able to send a static low signal on the LIN bus. The Atmel ATA6663 is the successor IC of the Atmel ATA6662 with an enhanced EMC performance and improved wake-up behavior resulting in a very low sleep mode current consumption even in the case of a floating bus or a short-circuit between the bus line and GND.

The ICs are the interface between the LIN protocol handler and the physical layer and is designed to handle the low-speed data communication in vehicles for example in convenience electronics. Improved slope control on the LIN bus ensures secure data communication of up to 20kBaud.

This document has been created as a quick start guide for using the development board of the Atmel ATA6663/ATA6664. Please refer to the corresponding datasheet for more detailed information about the Atmel ATA6663/ATA6664 itself.

Figure 1. Atmel ATA6663/ATA6664 Development Board



## Development Board Features

The development board for the Atmel® ATA6663/ATA6664 supports the following features:

- Includes all components necessary for Atmel ATA6663/ATA6664 operation
- All pins are easily accessible
- Can be used for master or slave operation
- Wake-up pulse via an on-board switch

## Quick Start

The development board for the Atmel ATA6663/ATA6664 is shipped with all components necessary to immediately start the development of a LIN slave node.

Connecting an external 12V DC power supply between the terminals VBAT and GND puts the IC in fail-safe mode. In this mode, the INH pin is switched to the VS level which can be used to enable an external voltage regulator (not included on the board). The LIN pin is in the recessive state.

Please note that the communication is still inactive during fail-safe mode.

To communicate via the LIN bus interface, you have to switch the device into normal mode by applying a high level (for example 5V) at pin EN.

As RXD is an open-drain output, the required pull-up resistor R2 can be activated by applying +5V DC voltage, on the designated pin on the board.

# 1. Hardware Description

In the following sections only the normal operating conditions are described. Refer to the corresponding datasheet for detailed information about the features mentioned.

## 1.1 Power Supply (VBAT, +5V and GND)

The development board requires an external 5.7V to 27V DC power supply between the terminals VBAT and GND. The input circuit is protected against inverse polarity with the protection diode D1, resulting in a difference between the VBAT and VS level of approximately 0.7V.

The DC voltage at pin +5V is only required for activating the pull-up resistor for the pin RXD.

## 1.2 LIN Interface (LIN, TXD and RXD)

### 1.2.1 Bus Pin (LIN)

A low-side driver with internal current limitation, thermal shutdown, and an internal pull-up resistor in compliance with LIN spec 2.x is implemented. The internal pull-up resistor is active in normal and fail-safe mode. The LIN receiver thresholds are compatible with the LIN protocol specification. The reverse current from the LIN bus to Vs is  $<2\mu\text{A}$ , even when Vbat is disconnected.

At a short circuit between LIN and  $V_{\text{Battery}}$ , the output limits the output current. Due to the power dissipation, the chip temperature exceeds the overtemperature threshold and the LIN output is switched off. The chip cools down and after the temperature hysteresis the output switches on again. RXD stays high because LIN is high.

On the board the LIN pin is assembled with a 220pF capacitor to ground. Additionally, the two extra components diode D2 (LL4148) in series with resistor R3 ( $1\text{k}\Omega$ ) required for using the development board for a LIN master application have designated placeholders for convenient mounting.

### 1.2.2 Input/Output Pin (TXD)

In normal mode the TXD pin is the microcontroller interface for controlling the state of the LIN output. TXD must be low in order to have a low LIN bus (dominant state). The TXD pin has an internal pull-down resistor. If TXD is high, the LIN output transistor is turned off and the bus is in the recessive state. If TXD is low, the LIN output transistor is turned on and the bus is in the dominant state.

An internal timer prevents the bus line from being driven permanently in the dominant state. If TXD is forced to low longer than  $t_{\text{DOM}} > 27\text{ms}$ , the LIN pin is switched off (recessive mode). To reset this mode, TXD needs to be switched to high ( $>10\mu\text{s}$ ) before switching LIN to dominant again. This feature is disabled in the ATA6664, meaning this device is able to send a static low to the bus and is therefore highly suitable for very low data rates.

During fail-safe mode the TXD pin is used as an output and signals the wake-up source if an external pull-up resistor is connected. The TXD output transistor is current limited to  $<8\text{mA}$ .

### 1.2.3 Output Pin (RXD)

This pin reports the state of the LIN bus to the microcontroller. LIN high (recessive state) is indicated by a high level at RXD, LIN low (dominant state) is indicated by a low level at RXD. The output is an open drain, therefore it is compatible with a 3.3V or 5V power supply. The output is short circuit protected.

Please note that the ATA6663/ATA6664 has to be in normal mode in order to have the communication via LIN enabled.

After a wake-up the device is in fail-safe mode and the RXD pin switches to low in order to interrupt the microcontroller.





Figure 2-3. Atmel ATA6663/ATA6664 Development Board; Top Side, Top View

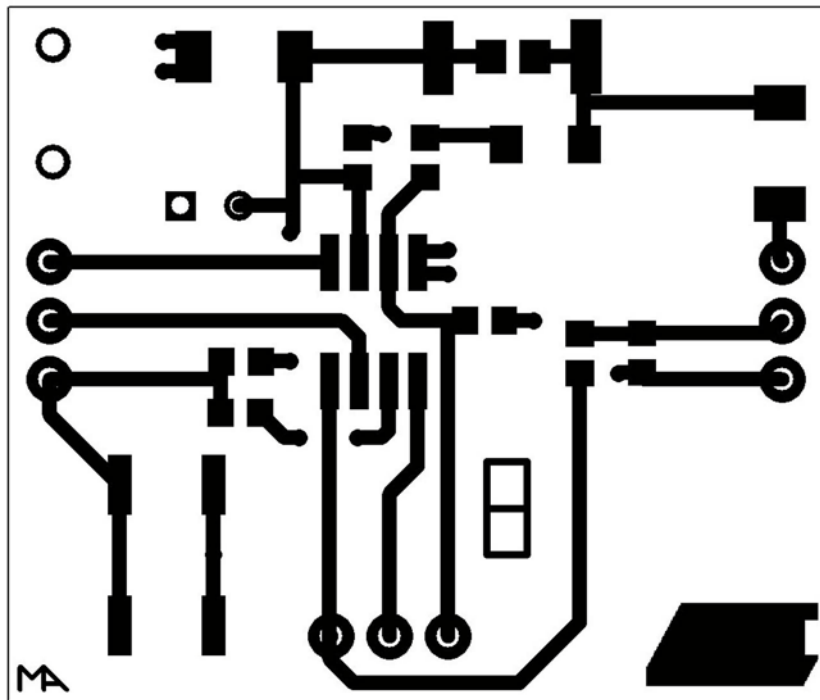
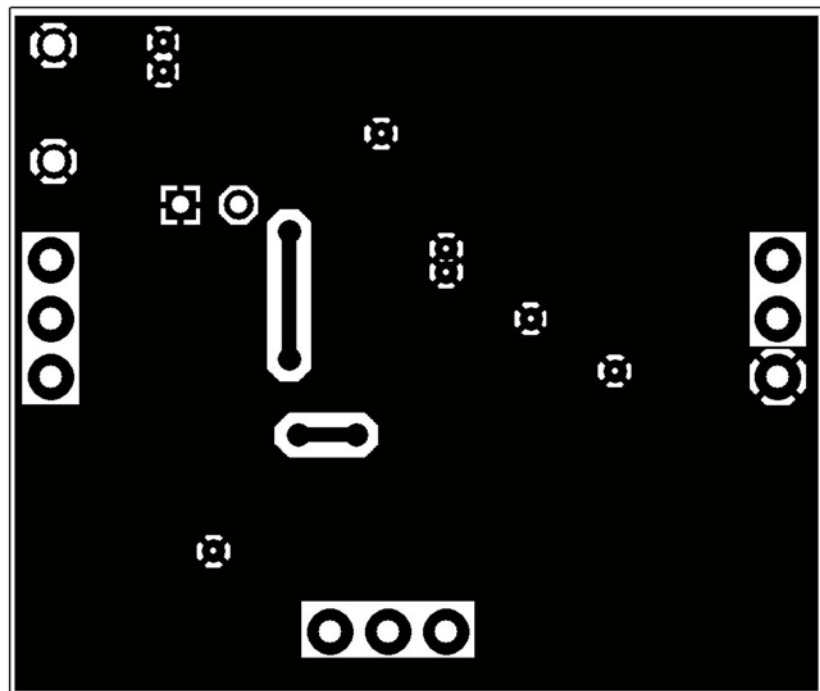


Figure 2-4. Atmel ATA6663/ATA6664 Development Board; Bottom Side, Top View (Transparent PCB View)



### 3. Revision History

Please note that the following page numbers referred to in this section refer to the specific revision mentioned, not to this document.

Revision No.	History
9201B-AUTO-06/15	<ul style="list-style-type: none"><li>• Put document in the latest template</li></ul>



**Atmel Corporation** 1600 Technology Drive, San Jose, CA 95110 USA T: (+1)(408) 441.0311 F: (+1)(408) 436.4200 | [www.atmel.com](http://www.atmel.com)

© 2015 Atmel Corporation. / Rev.: 9201B-AUTO-06/15

Atmel®, Atmel logo and combinations thereof, Enabling Unlimited Possibilities®, and others are registered trademarks or trademarks of Atmel Corporation in U.S. and other countries. Other terms and product names may be trademarks of others.

DISCLAIMER: The information in this document is provided in connection with Atmel products. No license, express or implied, by estoppel or otherwise, to any intellectual property right is granted by this document or in connection with the sale of Atmel products. EXCEPT AS SET FORTH IN THE ATMEL TERMS AND CONDITIONS OF SALES LOCATED ON THE ATMEL WEBSITE, ATMEL ASSUMES NO LIABILITY WHATSOEVER AND DISCLAIMS ANY EXPRESS, IMPLIED OR STATUTORY WARRANTY RELATING TO ITS PRODUCTS INCLUDING, BUT NOT LIMITED TO, THE IMPLIED WARRANTY OF MERCHANTABILITY, FITNESS FOR A PARTICULAR PURPOSE, OR NON-INFRINGEMENT. IN NO EVENT SHALL ATMEL BE LIABLE FOR ANY DIRECT, INDIRECT, CONSEQUENTIAL, PUNITIVE, SPECIAL OR INCIDENTAL DAMAGES (INCLUDING, WITHOUT LIMITATION, DAMAGES FOR LOSS AND PROFITS, BUSINESS INTERRUPTION, OR LOSS OF INFORMATION) ARISING OUT OF THE USE OR INABILITY TO USE THIS DOCUMENT, EVEN IF ATMEL HAS BEEN ADVISED OF THE POSSIBILITY OF SUCH DAMAGES. Atmel makes no representations or warranties with respect to the accuracy or completeness of the contents of this document and reserves the right to make changes to specifications and products descriptions at any time without notice. Atmel does not make any commitment to update the information contained herein. Unless specifically provided otherwise, Atmel products are not suitable for, and shall not be used in, automotive applications. Atmel products are not intended, authorized, or warranted for use as components in applications intended to support or sustain life.

SAFETY-CRITICAL, MILITARY, AND AUTOMOTIVE APPLICATIONS DISCLAIMER: Atmel products are not designed for and will not be used in connection with any applications where the failure of such products would reasonably be expected to result in significant personal injury or death ("Safety-Critical Applications") without an Atmel officer's specific written consent. Safety-Critical Applications include, without limitation, life support devices and systems, equipment or systems for the operation of nuclear facilities and weapons systems. Atmel products are not designed nor intended for use in military or aerospace applications or environments unless specifically designated by Atmel as military-grade. Atmel products are not designed nor intended for use in automotive applications unless specifically designated by Atmel as automotive-grade.