

MCP42XX PICtail Plus Daughter Board

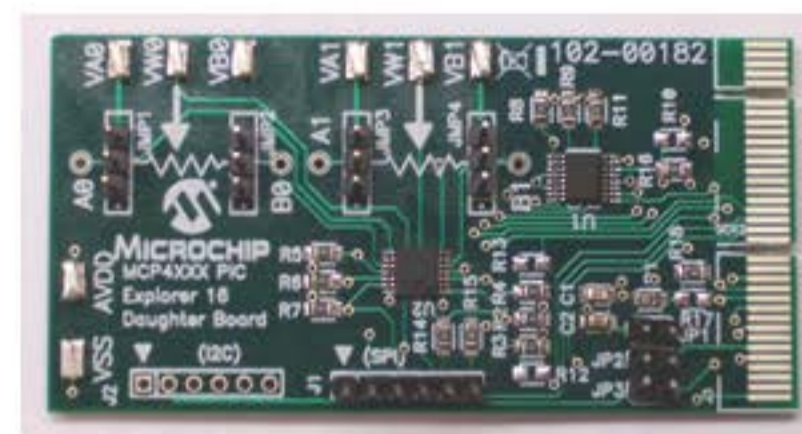
[Buy Now](#)


Part Number: MCP42XXDM-PTPLS

[Documentation & Software](#)

The MCP42XX PICtail Plus Daughter Board is used to demonstrate the operation of the MCP42XX Digital Potentiometers. The operation of the MCP41XX devices is similar to the MCP42XX devices. Therefore, this demo board can be used as a development platform for either device family.

This board is designed to be used in conjunction with either the PIC24 Explorer 16 Demo Board or the PICKit™ Serial Analyzer.



Features

Package Contents

Host System Requirements

- Each digital potentiometers Terminal A pin can be individually connected to either AVDD or the corresponding VAx pad
- Each digital potentiometers Terminal B pin can be individually connected to either AVSS or the corresponding VBx pad
- Can control the voltage on the MCP4261's CS pin to either VSS, 3.3V, 5.0V, or 9.0V via control signals from the PICtail Plus interface (J3)
- Can Control the MCP4261 via the PICKit™ Serial Analyzer interface (J1)
- PIC24 can monitor the voltage levels of the MCP4261's W0 and W1 pins
- Supplied with a "C" program that demonstrates normal and high voltage commands
- Demonstrates a split rail application, with digital logic at 3.3V and analog operation at 5.0V

Documentation & Software

[Back To Top](#)

AppNotes	Last Updated	Size	
AN1080 - Understanding Digital Potentiometers Resistor Variations	7/27/2009 1:45:44 PM	565KB	
Documents	Last Updated	Size	
7/8-Bit Single/Dual SPI Digital POT with Non-Volatile Memory	12/10/2008 3:54:06 PM	2MB	
7/8-Bit Single/Dual SPI Digital POT with Volatile Memory	12/10/2008 3:21:49 PM	2MB	
MCP42XX PICtail Plus Daughter Board User's Guide	9/30/2008 2:25:18 PM	1MB	
MCP42XX PICtail Plus Daughter Board Gerbers	9/30/2008 2:13:40 PM	228KB	
MCP42XX PICtail Plus Daughter Board Firmware	9/30/2008 2:10:05 PM	551KB	