

**DESCRIPTION**

This unique mesa construction (GC9700, GC9701, and GC9702) provides high breakdown voltage with true Schottky characteristics without resorting to the use of a diffused guard ring. The GC9703 and GC9704 are planar schottky devices. The standard devices are available in glass axial leaded packages as well as in chip form. Custom package styles are available on request.

**APPLICATIONS**

General high speed switching. High level mixers and detectors. Bridge quads for sampling circuits. Well suited for pulse shaping as well as limiting requirements..

**ABSOLUTE MAXIMUM RATINGS AT 25° C**  
 (UNLESS OTHERWISE SPECIFIED)

Rating	Symbol	Value	Unit
Carrier Lifetime	$T_L$	100	pS
Storage Temperature	$T_{STG}$	-65 to +200	°C
Operating Temperature	$T_{OP}$	-55 to +150	°C

**KEY FEATURES**

- Fast Switching
- Low Turn On Voltage
- Economical
- Tape and Reel Available
- RoHS Compliant<sup>1</sup>

<sup>1</sup> The GC9700 Series of products are supplied with a RoHS compliant Gold finish.

**APPLICATIONS/BENEFITS**

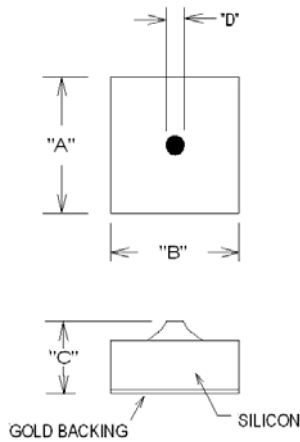
- Mixers
- Detectors
- Limiters
- Pulse Shaping

**CHIP ELECTRICAL PARAMETERS @ 25°C (unless otherwise specified)**

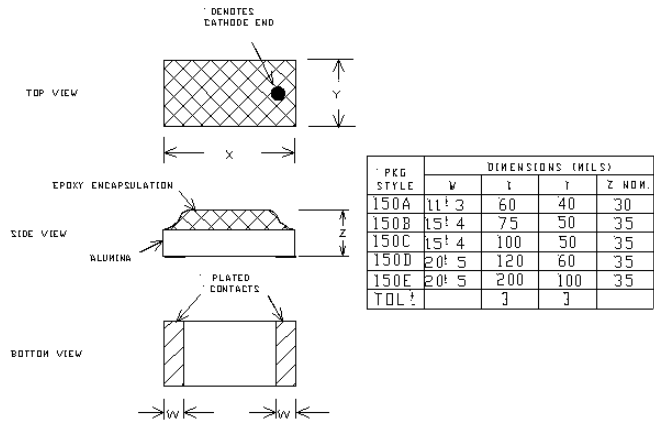
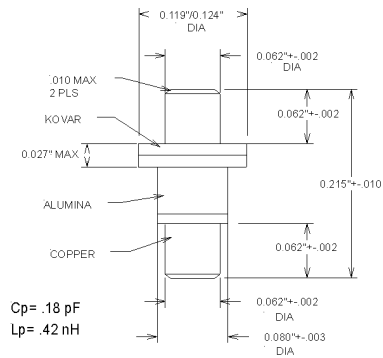
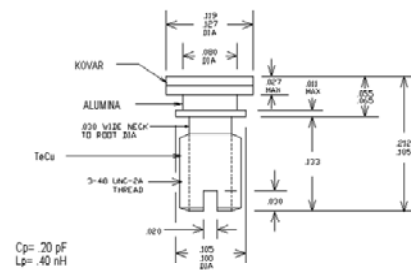
Model Number	$V_b(V)$ $I_R=10\mu A$ (Min)	$C_T(pF)$ $V_R=0V$ (Max)	$V_F(mV)$ $I_F=1mA$ (Max)	$I_F(mA)$ <sup>1</sup> @ 1.0V (Min)	$I_R(nA)$ @ $V_R$ (Max)	$V_R(V)$
GC9700	70	2.1	430	15	200	50
GC9701	30	1.5	430	50	100	25
GC9702	20	1.5	430	35	300	15
GC9703	8	1.2	350	10 <sup>1</sup>	100	1
GC9704	5	0.8	600	10	100	1

**Notes:**

1.  $I_F$  (min) for the GC9703 is measured at  $V_F = 0.5 V$ . All others measured at 1.0 V.

**Typical Package Options**
**PACKAGE STYLE 00**

**Notes:**

- Dimensions vary by model number
- Consult factory for details
- Order as GC25xx – 00

**PACKAGE STYLE 150A (-150E)**

**PACKAGE STYLE 30**

**PACKAGE STYLE 42**


OTHER PACKAGE STYLES AVAILABLE ON REQUEST  
 CONSULT FACTORY