

**Microcontrollers**

AVR 8- and 32-bit MCUs  
SMART ARM-based MCUs

8051 Architecture

Flash ISP - Single Cycle Core

Flash ISP (In-System Programmable)

Flash (Reprogrammable)

CAN Networking MCUs

USB MCUs

Lighting MCUs

ROMless

**Touch Solutions**

**Automotive**

**Wireless Connectivity**

**Smart Energy**

**Memory**

**Drivers and Sensors**

**Security ICs**

**Programmable Logic**

**Analog**

**Rad Hard**

**Digital Broadcast**

Microcontroller Selector

Home > Products > Microcontrollers > 8051 Architecture > Flash ISP - Single Cycle Core

# maXTouch Xplained Pro

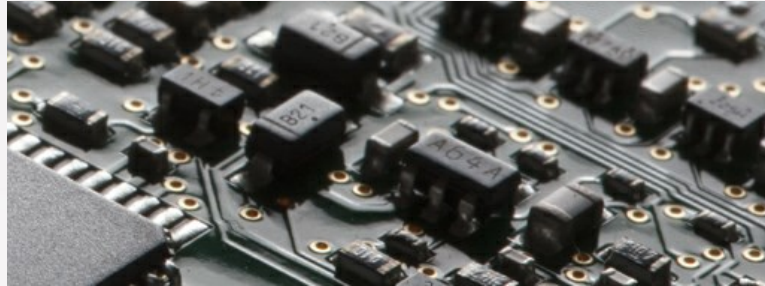
Overview

Devices

Documents

Applications

Related Tools



Buy Now

Atmel maXTouch Xplained Pro is an extension board to the Atmel Xplained Pro evaluation platform. The board enables the user to experiment with user interface applications with maXTouch and LCD. MCU boards to the maXTouch Xplained Pro can be purchased individually.

The ATMXT-XPRO evaluation kit does not include MCU boards.

For compatible Xplained Pro MCU boards please see the Related Tools tab.

- **LCD**
  - ILI9488 LCD Driver
  - 480x320 Resolution
  - Parallel interface (up to 18-bits)
  - 3 & 4 wire SPI interface
  - maXTouch capacitive touch screen controller
- **Xplained Pro identification system**
- **Kit Contents**
  - One LCD module
  - One 50-way Flexible Flat Cable (FFC)
  - One 20-way Ribbon Cable
  - 4 Mounting screws and 8 threaded spacers

## Ordering Information

Ordering Code	Atmel Store Availability <sup>1</sup>	Unit Price <sup>2</sup>	Buy Online
ATMXT-XPRO			<a href="#">Check Distributor</a>

<sup>1</sup>Backlog orders can be placed for items currently not available.

<sup>2</sup>Suggested retail price per unit for budgetary use only.



### Get Started

We'll tell you all you need to know to start evaluating and working with this product.

- » [Start Now](#)
- » [Contact Sales](#)
- » [Request Samples](#)
- » [Sign-up for News](#)

### Related Items

- » [Third Party Support](#)
- » [8051 Architecture Knowledge Base](#)
- » [8051 Direct Replacements](#)
- » [8051 Non-direct Replacements](#)
- » [Technical Support](#)
- » [What's Changed](#)
- » [Mature Devices](#)

Microcontrollers  
Touch Solutions  
Automotive  
Wireless Connectivity  
Smart Energy  
Memory  
Drivers and Sensors  
Security ICs  
Programmable Logic  
Analog  
Rad Hard  
Digital Broadcast

Automotive  
Building Automation  
Home Appliances  
Home Entertainment  
Industrial Automation  
Lighting  
Internet of Things (IoT)  
Smart Energy  
Mobile Electronics  
PC Peripherals  
Wearables

Boards and Kits  
Tools and Software  
Development Tools  
Document Library  
Training  
Support Resources  
Third-Party Tools/Support  
Design Consultants

Corporate  
Press Room  
Contact Atmel  
Investors  
Careers  
Suppliers  
Embedded Design Blog  
Quality  
Compliance

Buy  
Atmel Store FAQs  
Technical Support  
Communities