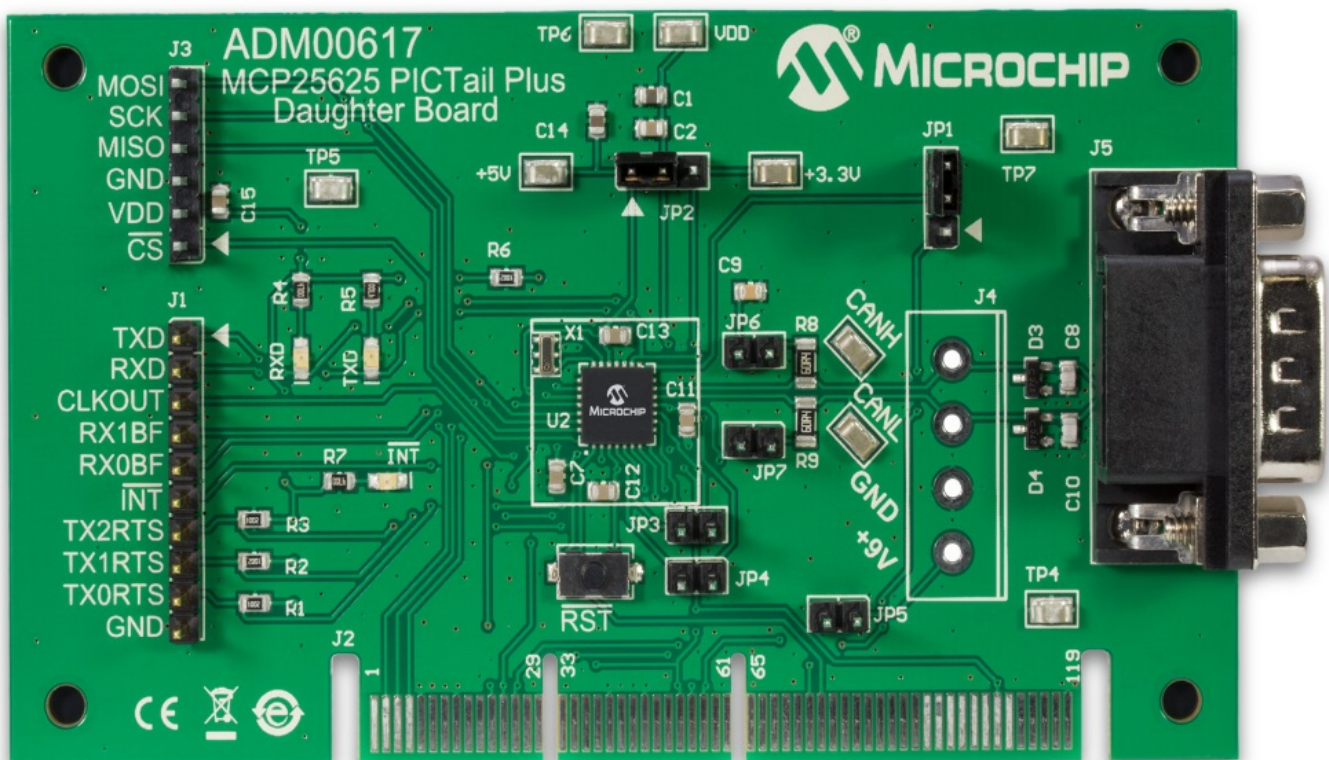

 Part Number: ADM00617

**BUY
IT NOW**


The MCP25625 PICTail™ Plus Daughter Board is a simple Controller Area Network (CAN) board designed to be used with boards containing the PICTail Plus connector. The board also has the PICkit™ Serial connector for interfacing to the PICkit Serial Analyzer tool. The single-chip solution CAN node consists of the MCP25625 CAN Controller with Integrated Transceiver. The PICkit Plus and PICkit Serial connectors allow the board to be interfaced to a variety of PIC® microcontrollers so that the user can develop a CAN node. The board also contains headers and test points for most of the MCP25625 pins that allow the external functions to be monitored/evaluated. Additionally, there are multiple external components and jumper configurations for added flexibility.

Features

Package Contents

- Stand-alone CAN controller & transceiver integrated into a single chip
- PICTail Plus connector for interfacing with the Explorer 16 and other main boards that have this connector
- DB9 connector for interconnecting CAN networks using the de facto standard pinout
- Footprint for terminal block connector for the CAN bus
- Test points for the MCP25625 pins



Documents	Last Updated	Size	
MCP25625 PICTail? Daughter Board User's Guide	4/29/2016 9:35:38 AM	1MB	
MCP25625 PICTail Plus Daughter Board (ADM00617) Firmware	2/26/2016 2:46:00 AM	27KB	
MCP25625 PICTail Plus Daughter Board (ADM00617) Layouts	1/8/2016 9:07:07 AM	1MB	
MCP25625 PICTail Plus Daughter Board (ADM00617) Gerbers	12/21/2015 5:08:53 AM	494KB	
MCP25625 PICTail Plus Daughter Board (ADM00617) BOM	12/21/2015 5:08:53 AM	19KB	
MCP25625 PICTail Plus Daughter Board (ADM00617) SCH	12/21/2015 5:08:07 AM	735KB	
MCP25625	4/15/2014 12:00:00 PM	0KB	
MCP25625 CAN Controller with Integrated Transceiver Data Sheet	3/21/2014 1:57:21 PM	1MB	