
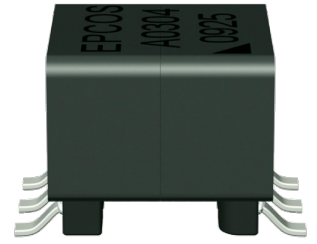


用途	一般
功能	门驱动变压器
型	B82804A
状态	 量产体制
品牌	EPCOS



尺寸

长度(L)	6.70mm Max.
宽度(W)	8.10mm Max.
厚度(T)	5.40mm Max.

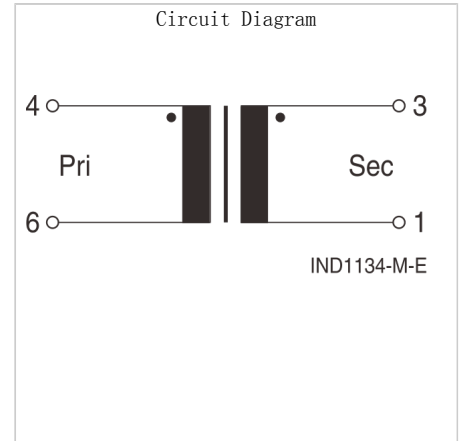
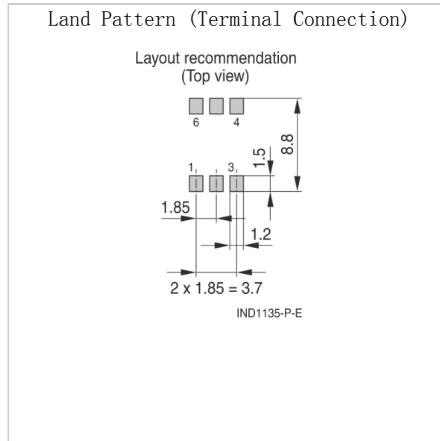
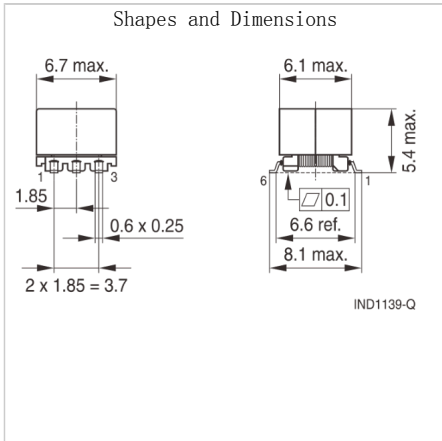
电气特性

卷数比	2.5:1
输出的数量	1
电感	473 μ H Min.
漏电感 [Max.]	1.5 μ H
耐电压	1.5kVDC 1sec.

其他

使用温度范围	-40~125° C
AEC-Q200	NO
包装形式	塑封编带 (330mm卷筒、带宽 16mm)
包装个数	850pcs
重量	0.5g

Associated Images



! Images are for reference only and show exemplary products.
 ! This PDF document was created based on the data listed on the TDK Corporation website.
 ! All specifications are subject to change without notice.