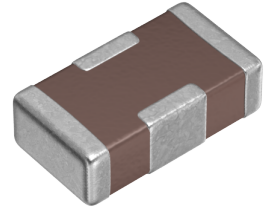


用途	一般等级
特点	电源线用
系列	YFF
状态	量产体制



尺寸

长度(L)	1.00mm ±0.05mm
宽度(W)	0.55mm ±0.05mm
厚度(T)	0.30mm ±0.05mm

电气特性

插入损耗 [Typ.]	40dB (0.8MHz~1GHz)
截止频率 [Typ.]	
额定电压 [Max.]	6.3V
额定电流 [Max.]	3A
定格电流额定值降低	DC3A/85°C, DC2A/105°C
直流电阻 (Max.)	12mΩ
额定电容 [Typ.]	1 μF

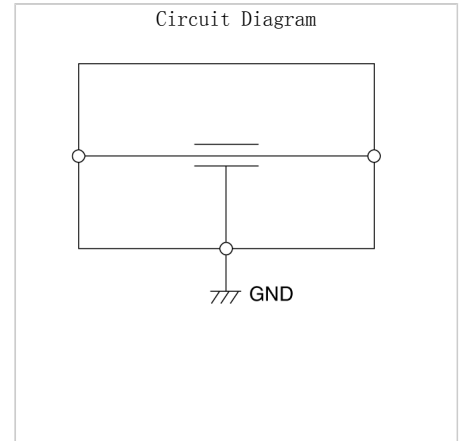
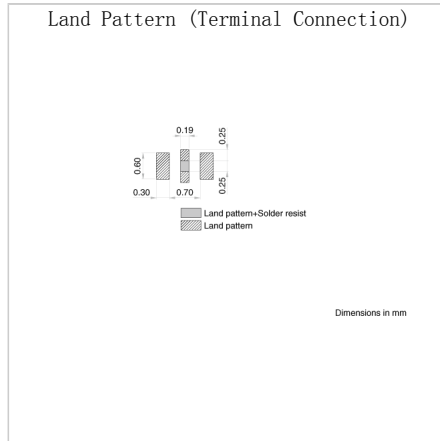
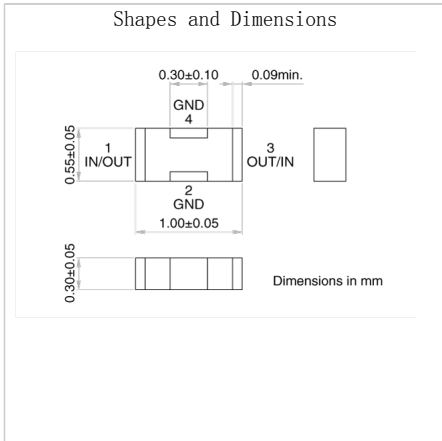
其他

电路型	贯通型
传输线路	单端
使用温度范围	-55~105° C
焊接方法	回流
AEC-Q200	NO
包装形式	纸编带 (330mm卷筒)
包装个数	50000pcs
重量	0.0008g

! Images are for reference only and show exemplary products.
! This PDF document was created based on the data listed on the TDK Corporation website.
! All specifications are subject to change without notice.

特性图表 (这是参考数据，并不保证产品的特性。)

Associated Images



! Images are for reference only and show exemplary products.
 ! This PDF document was created based on the data listed on the TDK Corporation website.
 ! All specifications are subject to change without notice.