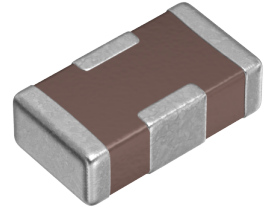


用途	一般等级
特点	信号线用
系列	YFF
状态	量产体制



尺寸

长度(L)	1.00mm ±0.05mm
宽度(W)	0.55mm ±0.05mm
厚度(T)	0.30mm ±0.05mm

电气特性

插入损耗 [Typ.]	30dB (4GHz~6GHz)
截止频率 [Typ.]	300MHz
额定电压 [Max.]	50V
额定电流 [Max.]	1A
定格电流额定值降低	
直流电阻 (Max.)	300mΩ
额定电容 [Typ.]	22pF

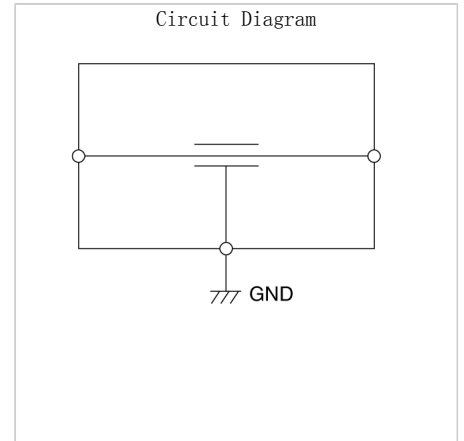
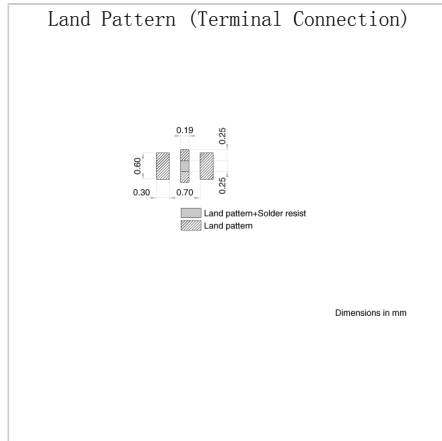
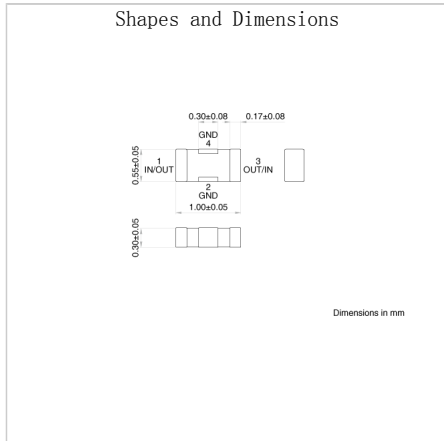
其他

电路型	贯通型
传输线路	单端
使用温度范围	-55~125° C
焊接方法	回流
AEC-Q200	NO
包装形式	纸编带 (180mm卷筒)
包装个数	10000pcs
重量	0.0008g

! Images are for reference only and show exemplary products.
! This PDF document was created based on the data listed on the TDK Corporation website.
! All specifications are subject to change without notice.

特性图表 (这是参考数据，并不保证产品的特性。)

Associated Images



! Images are for reference only and show exemplary products.
 ! This PDF document was created based on the data listed on the TDK Corporation website.
 ! All specifications are subject to change without notice.