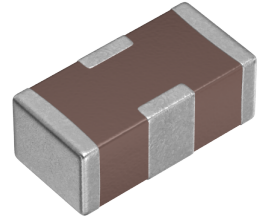


|    |      |
|----|------|
| 用途 | 一般等级 |
| 特点 | 电源线用 |
| 系列 | YFF  |
| 状态 | 量产体制 |



### 尺寸

|       |                |
|-------|----------------|
| 长度(L) | 1.60mm ±0.20mm |
| 宽度(W) | 0.80mm ±0.10mm |
| 厚度(T) | 0.80mm ±0.10mm |

### 电气特性

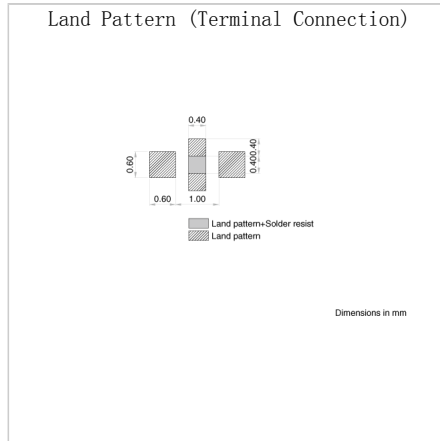
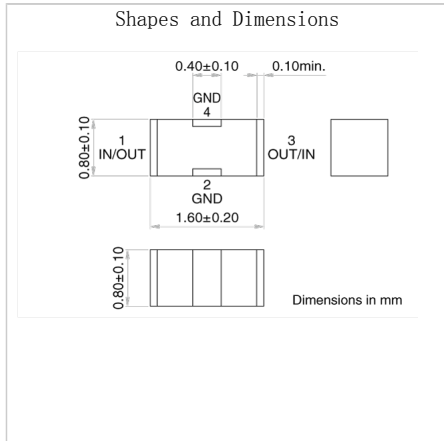
|             |                    |
|-------------|--------------------|
| 插入损耗 [Typ.] | 40dB (0.4MHz~1GHz) |
| 截止频率 [Typ.] |                    |
| 额定电压 [Max.] | 6.3V               |
| 额定电流 [Max.] | 4A                 |
| 定格电流额定值降低   |                    |
| 直流电阻 (Max.) | 12mΩ               |
| 额定电容 [Typ.] | 2.2 μF             |

### 其他

|          |               |
|----------|---------------|
| 电路型      | 贯通型           |
| 传输线路     | 单端            |
| 使用温度范围   | -55~85° C     |
| 焊接方法     | 回流            |
| AEC-Q200 | NO            |
| 包装形式     | 纸编带 (330mm卷筒) |
| 包装个数     | 10000pcs      |
| 重量       | 0.0051g       |

特性图表 (这是参考数据，并不保证产品的特性。)

## Associated Images



! Images are for reference only and show exemplary products.  
 ! This PDF document was created based on the data listed on the TDK Corporation website.  
 ! All specifications are subject to change without notice.