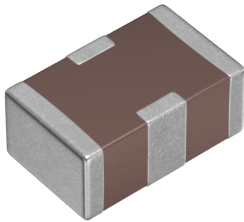


用途	 车载等级
特点	 AEC-Q200  电源线用
系列	YFF
状态	 量产体制



尺寸	
长度(L)	2.00mm ±0.20mm
宽度(W)	1.25mm ±0.20mm
厚度(T)	0.85mm ±0.15mm

电气特性	
插入损耗 [Typ.]	30dB (10MHz～2GHz)
截止频率 [Typ.]	200kHz
额定电压 [Max.]	25V
额定电流 [Max.]	1A
定格電流额定值降低	
直流电阻 (Max.)	80mΩ
额定电容 [Typ.]	22nF

其他	
电路型	贯通型
传输线路	单端
使用温度范围	-55～125° C
焊接方法	回流
AEC-Q200	YES
包装形式	纸编带 (330mm卷筒)
包装个数	10000pcs
重量	0.0095g

! Images are for reference only and show exemplary products.
! This PDF document was created based on the data listed on the TDK Corporation website.
! All specifications are subject to change without notice.

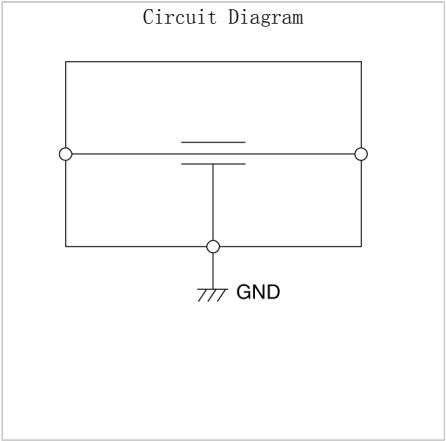
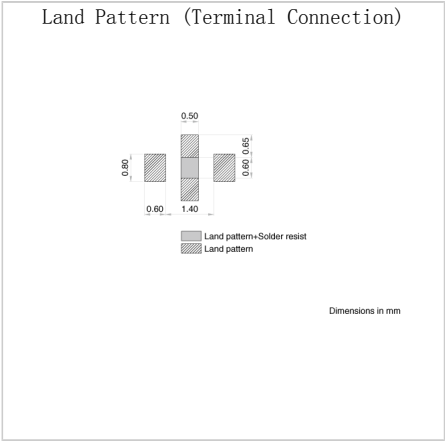
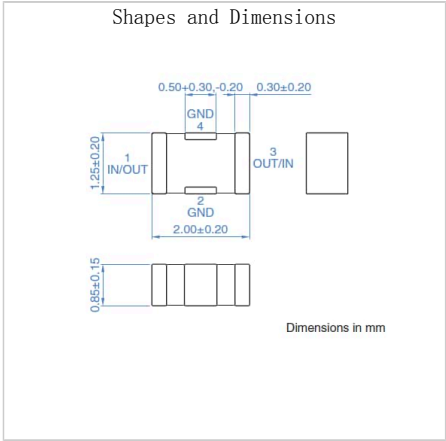
3端子滤波器

YFF21AC1E223MT0Y9N

RoHS Reach Halogen Free Pb Free

特性图表 (这是参考数据，并不保证产品的特性。)

Associated Images



! Images are for reference only and show exemplary products.
! This PDF document was created based on the data listed on the TDK Corporation website.
! All specifications are subject to change without notice.