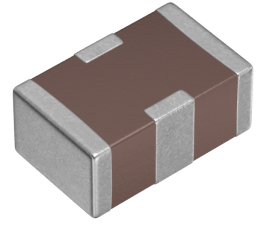


| | |
|----|----------|
| 用途 | 车载等级 |
| 特点 | AEC-Q200 |
| | 电源线用 |
| 系列 | YFF |
| 状态 | 量产体制 |



尺寸

| | |
|-------|----------------|
| 长度(L) | 2.00mm ±0.20mm |
| 宽度(W) | 1.25mm ±0.20mm |
| 厚度(T) | 0.85mm ±0.15mm |

电气特性

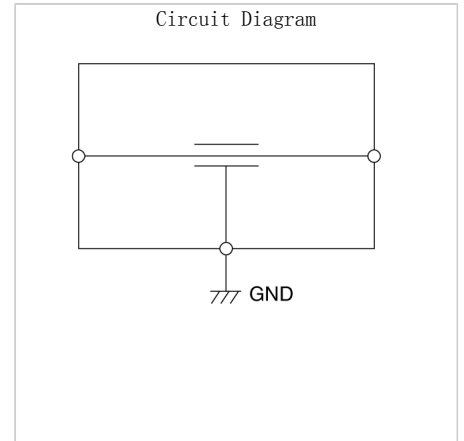
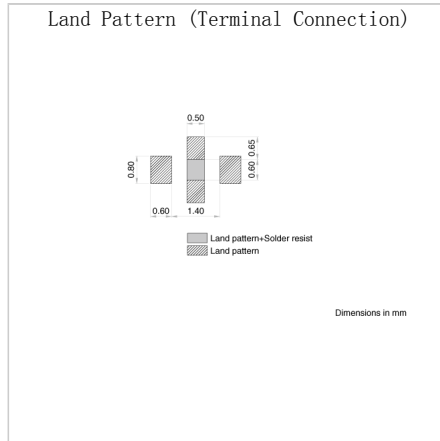
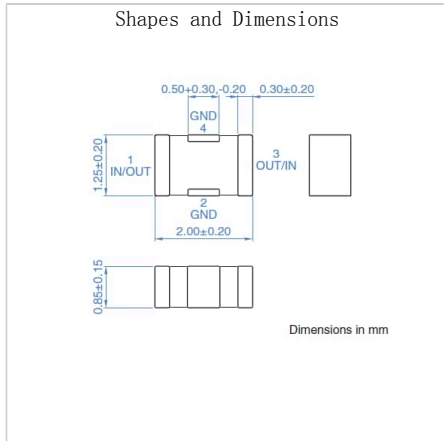
| | |
|-------------|--------------------|
| 插入损耗 [Typ.] | 30dB (400MHz~5GHz) |
| 截止频率 [Typ.] | 10MHz |
| 额定电压 [Max.] | 50V |
| 额定电流 [Max.] | 1A |
| 定格電流额定值降低 | |
| 直流电阻 (Max.) | 300mΩ |
| 额定电容 [Typ.] | 470pF |

其他

| | |
|----------|---------------|
| 电路型 | 贯通型 |
| 传输线路 | 单端 |
| 使用温度范围 | -55~125° C |
| 焊接方法 | 回流 |
| AEC-Q200 | YES |
| 包装形式 | 纸编带 (180mm卷筒) |
| 包装个数 | 4000pcs |
| 重量 | 0.0095g |

特性图表 (这是参考数据，并不保证产品的特性。)

Associated Images



! Images are for reference only and show exemplary products.
 ! This PDF document was created based on the data listed on the TDK Corporation website.
 ! All specifications are subject to change without notice.