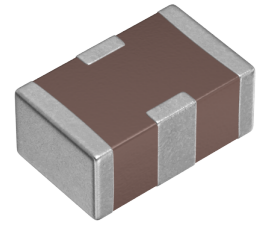


用途	车载等级
特点	AEC-Q200
	电源线用
系列	YFF
状态	量产体制



## 尺寸

长度(L)	2.00mm ±0.20mm
宽度(W)	1.25mm ±0.20mm
厚度(T)	0.85mm ±0.15mm

## 电气特性

插入损耗 [Typ.]	30dB (40MHz~2GHz)
截止频率 [Typ.]	1MHz
额定电压 [Max.]	50V
额定电流 [Max.]	400mA
定格电流额定值降低	
直流电阻 (Max.)	300mΩ
额定电容 [Typ.]	4.7nF

## 其他

电路型	贯通型
传输线路	单端
使用温度范围	-55~125° C
焊接方法	回流
AEC-Q200	YES
包装形式	纸编带 (330mm卷筒)
包装个数	10000pcs
重量	0.0095g

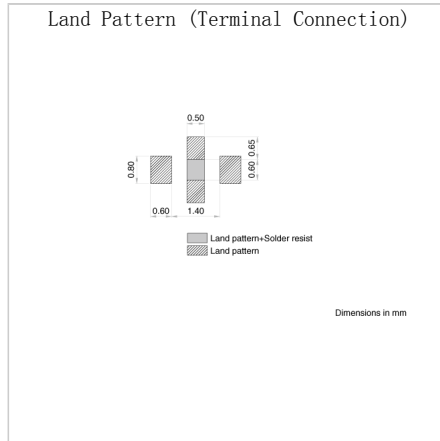
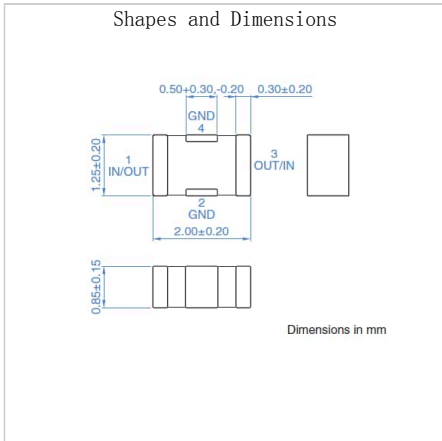
! Images are for reference only and show exemplary products.

! This PDF document was created based on the data listed on the TDK Corporation website.

! All specifications are subject to change without notice.

特性图表 (这是参考数据，并不保证产品的特性。)

## Associated Images



! Images are for reference only and show exemplary products.  
 ! This PDF document was created based on the data listed on the TDK Corporation website.  
 ! All specifications are subject to change without notice.