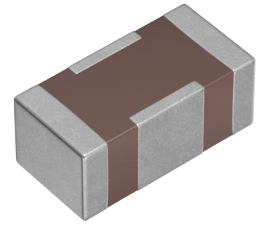


|    |                     |
|----|---------------------|
| 用途 | 车载等级                |
| 特点 | AEC-Q200<br>大电流电源线用 |
| 系列 | YFF                 |
| 状态 | 量产体制                |



### 尺寸

|       |                |
|-------|----------------|
| 长度(L) | 3.20mm ±0.20mm |
| 宽度(W) | 1.60mm ±0.20mm |
| 厚度(T) | 1.30mm ±0.20mm |

### 电气特性

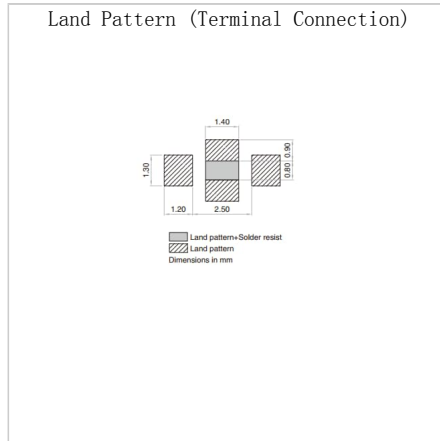
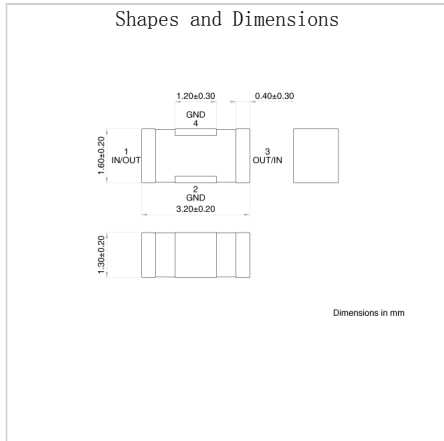
|             |                         |
|-------------|-------------------------|
| 插入损耗 [Typ.] | 40dB (7MHz~2GHz)        |
| 截止频率 [Typ.] |                         |
| 额定电压 [Max.] | 100V                    |
| 额定电流 [Max.] | 10A                     |
| 定格电流额定值降低   | DC10A/105°C, DC6A/125°C |
| 直流电阻 (Max.) | 2.5mΩ                   |
| 额定电容 [Typ.] | 100nF                   |

### 其他

|          |                |
|----------|----------------|
| 电路型      | 贯通型            |
| 传输线路     | 单端             |
| 使用温度范围   | -55~125° C     |
| 焊接方法     | 回流             |
| AEC-Q200 | YES            |
| 包装形式     | 塑封编带 (180mm卷筒) |
| 包装个数     | 2000pcs        |
| 重量       | 0.0342g        |

特性图表 (这是参考数据，并不保证产品的特性。)

## Associated Images



! Images are for reference only and show exemplary products.  
 ! This PDF document was created based on the data listed on the TDK Corporation website.  
 ! All specifications are subject to change without notice.