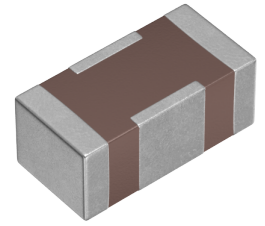


用途	车载等级
特点	AEC-Q200 大电流电源线用
系列	YFF
状态	量产体制



## 尺寸

长度(L)	3.20mm ±0.20mm
宽度(W)	1.60mm ±0.20mm
厚度(T)	1.30mm ±0.20mm

## 电气特性

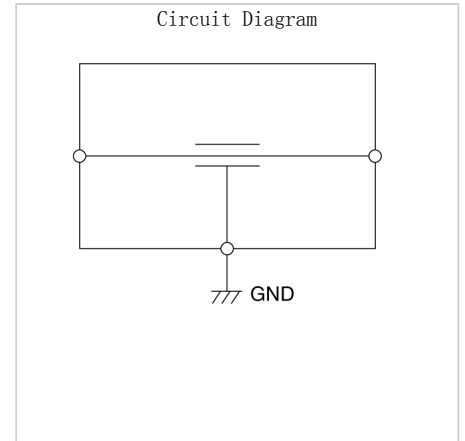
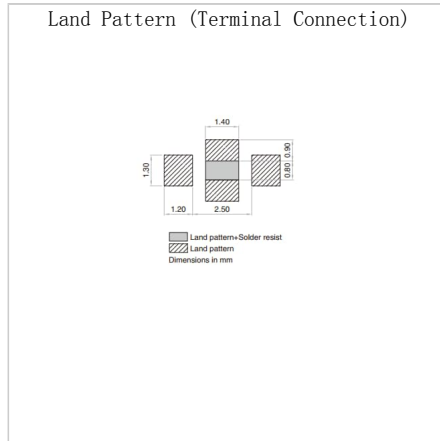
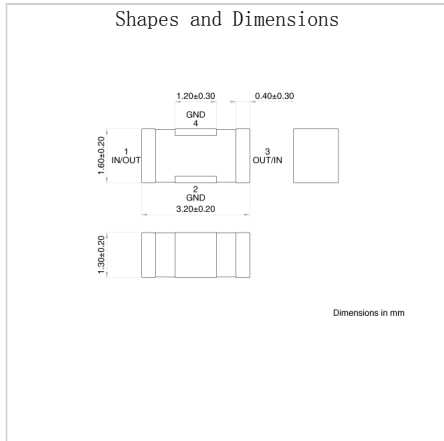
插入损耗 [Typ.]	40dB (7MHz~2GHz)
截止频率 [Typ.]	
额定电压 [Max.]	100V
额定电流 [Max.]	10A
定格电流额定值降低	DC10A/105°C, DC6A/125°C
直流电阻 (Max.)	2.5mΩ
额定电容 [Typ.]	100nF

## 其他

电路型	贯通型
传输线路	单端
使用温度范围	-55~125° C
焊接方法	回流
AEC-Q200	YES
包装形式	塑封编带 (330mm卷筒)
包装个数	10000pcs
重量	0.0342g

特性图表 (这是参考数据，并不保证产品的特性。)

## Associated Images



! Images are for reference only and show exemplary products.  
 ! This PDF document was created based on the data listed on the TDK Corporation website.  
 ! All specifications are subject to change without notice.